

Bluefaced Leicester Sheep Breeders' Association

Autumn Review

2008 - Edition No. 22



Inside -
NEW Shearling
Breed Record



HAWES

Auction Mart

HAWES, NORTH YORKSHIRE
Tel: 01969 667207 Fax: 01969 667220

Saturday January 17th 2009

Prize Show & Sale of Registered
Bluefaced Leicester females for the
Bluefaced Leicester Sheep Breeders' Association.

Judging 10.30 am. Sale 12.30 pm.

Entries close December 30th 2008.

Special Prize Show & Sale of Individual Crowned
Swaledale Ewes, Gimmer Shearlings and Gimmer Lambs
for the Swaledale Sheep Breeders' Association.

Judging 11 am.

For further information contact: R J Lund Auctioneer

Tel: 015396 20895 or 0797 4126397

J H Walton 0798 3387293

www.hawesmart.co.uk

Email: office@hawesmart.co.uk

Midlock



£10,000 ram sold at Hawes sired by Riddings X1

For sale at Carlisle in January -
20 females, in-lamb to Riddings X1,
Bull & Cave V3 and Midlock Controversy V25

Contact - Alan Wight - 07796 302467



Hawes - £11,500

Sold to :

W A & A Booth, Smearsett flock

**M/s Lawson & Sons,
Kirkland Green,
Mealsgate, Wigton,
Cumbria CA7 1LD**

Tel: 01697 371242

Hundith Scores A Hat Trick

All sale top prices and are all by
Midlock Y1 purchased two years ago
at Hawes for £8,500 by Jack Lawson,
Ken Jones and David Abberley



Penrith - £4,200

Sold to : J C Pedley, Yore House
flock with J Lawson, Hundith flock
purchasing a share back



Carlisle - £2,800

Sold to : W C Porter, Riddings flock and
A C Hutchinson, Redhill flock

Autumn 2008

Office News



2009 Subscriptions

If you do not pay your £25 annual subscription to the Association by standing order, please note that payment is due on **1st January 2009. No invoices are sent out.** Non paid up members are automatically excluded from the mailing list.

Registration Forms

As last year, these were sent out to members on receipt of 2008 tag orders. If you have not already returned your completed form to the office, please do so by the 31st December to make sure you have your Flock included in this year's Flock Book.

Shows 2008

The Association Stand was present at Scotsheep in Hawick, The Royal Highland Show, The Great Yorkshire Show, the Royal Welsh Show, NSA Malvern Sheep Event, and Expo 2008, at Carlisle. I would like to thank all the many hands who helped to man the stand and move it around the various events. I also enjoyed attending the Balmoral Show in Northern Ireland in May, the English Royal in July, and the Scottish and North West Open Days. It's good to get out of the office and meet the members face to face.

Sales 2008

Rachael and I would like to express our thanks to those members who sent their entries in on time for the Sales this year. With delayed entry dates due to Blue Tongue Virus Vaccination problems, we had to do a quick turnaround and your help was much appreciated.

Association Database

An innovation for 2008 was the use of the database for some of the Sales Catalogues. Details of animals entered for Sales at Kelso, Ruthin, Lanark and Hereford were extracted from the database, and forwarded to the printers. Those observant members may have noticed a different layout for these catalogues – we look forward to hearing your views. However, it was noticed that information entered by members on their Sales entry forms was not always identical to that already entered on the database. The database contains the information received from your Registration Forms (including the dam of the lamb if possible) so please make sure the information you provide us with is accurate as it is now used for several purposes, including some Sales Catalogues and, this year for the first time, the compilation of the Flock Book.

Exports

Requests for Bluefaced Leicesters from abroad have been slow to come in, and requests so far have been met from our present export register. A new export register will be set up for 2009, so if you are not on the present register, please email or call the office to add your name if you have eligible animals available. At present most importing countries are only accepting animals which carry the ARR/ARR scrapie genotype or from Scrapie Monitored Flocks.

Christmas and New Year Arrangements

The office will be closed from Monday 22nd December until Friday 2nd January 2009 inclusive. Best Wishes to all the membership for Christmas and 2009.

Association Contacts -

Chairman - Nicky Robinson

West Cocklaw, Humshaugh, Hexham
Tel: 01434 681362

Vice-Chairman - Phil Davies

The Gornal, Llanymynech, Powys
Tel: 01691 830486

Bluefaced Leicester

Sheep Breeders' Association

Secretary - Jean Gibbon, Furmiston,
Carsphairn, Castle Douglas DG7 3TE
Tel/Fax: 01644 460647
Email: info@blueleicester.co.uk

Front page -

**Phil May (Derwenlas flock) and
Gareth Roberts (Myfyrian flock)
with the Royal Welsh Interbreed
Pairs winners 2008**

Contents - Editorial

From The Chairman	4
Publicity Report	5
2008 Show Champions	6-7
Progeny Shows	8-12
2008 Classified Rams	14
South West Seeds Article	15
David Cruikshank American Visit	16
2008 Sales Top Prices	18-19
£1,000 & Over Ram Register	20-26
2008 Flock Visit Photographs	27
Regional News	28-30
Association Competition	I.B.C
Adverts	
Abberley, D J	15
Drummond, M & C	B.C.
Harrison & Hetherington	12
Hawes Auction Mart	I.F.C.
Hutchinson, W	29
Lawson, M/s	I.F.C.
Marston, N	B.C.
Robinson, M C & Son	B.C.
Williams, G P & Co	4
Wight, J & Sons	I.F.C.

Quality And Not Quantity Is The Key

Being National Chairman is a great honour, it has opened my eyes to what a great Association we have when everyone pulls together. When I first took on the job I was extremely nervous but in the following week I had so many calls of support and offers of help I was overwhelmed.

On occasions I have struggled to attend all the events I had planned to for several reasons. The first of these being staffing problems at home and the second the dreadful weather we have had this summer holding up all the work. So I apologise for missing some things but you always have to look after home first. In fact, the only family days out I have managed this year have been to Leicester events - the first being the Great Yorkshire Show where we had a stand for the first time which was quite a success. The second was the super North West Open Day at John Townson and John Stotts which we all enjoyed and it was great seeing the sheep get milked and the hospitality was second to none. A big thanks to both parties for organising this. The third was The Welsh Progeny Show which was very well run, and finally Carlisle Expo on Friday the 31st October, where we had the stand there and we had a really good day. Thanks to all who helped. It is a good job the whole family are interested.

The job has given me a few headaches as well, in particular the Blue Tongue situation at sale time. The country was carved up and we kept getting conflicting information as to the timing of different areas been added to the to the zone. In the end it was only Scotland left out of the zone, which left me with my own problem of where to sell my tups if I couldn't get to Kelso. Once again I was amazed at people's hospitality ringing up and offering us and a lot of other vendors B & B for tups, and in the end I took up the offer and moved some tups to Scotland before we were added to the zone. I would like to thank these people for their kindness, it was much appreciated. On the whole buyers have been very choosy at sales with only the best sheep selling, and I think we all have to be more selective when choosing the sheep to keep. I know I have halved the number of ewes going to the tup and I have been very careful on choosing which lambs to keep over. I think quality and not quantity is the key.

I would like to thank all the people who have helped and advised me and I hope everyone has a very good Christmas. We now have to start looking forward and hoping that next year is a good one. All The Best.



Nicky Robinson

Eliau Flock

No 2832



17,000 gns ram sold at Builth Wells this year
Sire: Craig-Yr-Orsedd X3 Elite Plus

Semen is available for sale from
Craig-Yr-Orsedd X3 Elite Plus and Hazelwood X2
Elite Plus, both proven and exceptional Bluefaced
Leicesters with power and style.

Females For Sale Privately

For further details contact - Dewi Williams
G P Williams & Co, Bryn Dansi, Dolwen, Abergele, Conwy
Tel: 01492 680285 / 07831 340834
Email: bryndansifarm@btinternet.com

Publicity Update

It was a great privilege to become Vice Chairman of the Association and thus Chairman of the Publicity Committee held on the 1st of July.

Much of the year has again been quite difficult for British sheep farmers and the sheep industry in general, for although everyone has been very happy to see improved prices it has to be highlighted that the increased costs of production are taking out the majority of the benefit.

Politically the Blue Tongue farce has made the marketing of breeding stock very uncertain with sale dates and venues consistently reviewed.

Demand is the greatest driver of breeding stock as this will be reflected in the price and therefore the Association decided to make a positive contribution to the marketing of member's animals at forthcoming sales. The strategy was to introduce the brand **"UK MULES"**, the idea being to promote the Bluefaced Leicester ram amongst the Mule breeders and therefore hopefully increase sales.

Bluefaced Leicesters have always been promoted as the premium crossing sire, producing easy to manage Mules.

Only by addressing issues now will the Bluefaced Leicester sheep breeders be well placed to face the challenges of the future. Improving productivity, whilst reducing inputs, may appear to be an impossible circle to square, but we have the tools already existing within the Bluefaced Leicester ram. Prolific, easy care Mules, mated to terminal sires that produce lambs which are easily shepherded, hardy, and can finish off high quality pastures with minimum labour requirement.

A cartoon poster, an idea from Martyn Archer and Peter Scott, was thought to be an ideal advertising initiative, bringing to the forefront



the benefits of the **"UK MULE"**. The cartoon was made up as an advert which was placed in the farming press and as posters which were displayed around all the markets countrywide. The response to these has been very positive (with a number of telephone calls received) which gives us an ideal base to promote "blues" in the future.

Sales this year have been generally very good (as documented in this issue) especially for the better quality stock, a reminder to us all to breed only the "best".

I would like to remind members to keep looking for breeders, both pedigree and commercial, with "new angle" stories who could be contacted and articles written for this magazine and farming press. If you have any ideas please contact myself or Matt Drummond who makes a brilliant job of Publicity Officer.

Exports To Romania

Jo Binns of the Llwygy flock was first approached by Mike Adams and Neale McQuistin about exporting rams to Romania in August 2006. He proceeded ahead with getting blood tests for Brucella Ovis and just after receiving the test results the second outbreak of Foot and Mouth shut down the export market and unfortunately left him with a hefty vet bill.

In August this year, Jo received a phone call from Jean asking if he had sheep vaccinated by a vet for Blue Tongue available for export and fortunately he did as he had decided to get his rams for Bulth vaccinated as a possible selling point.

Jo contacted Mike Adams the exporter, and started the process of getting the paper work sorted. Blood tests were required for Brucella Ovis and Blue Tongue. The sheep needed to be type 1 Scruppie tested and also no stock were allowed to be moved on to the farm 21 days before export.

Finally the day came to transport the sheep to the export facility,

and the inspection of the sheep and the associated paper work took one and a half hours and resulted in yet another bill from the vet.

The sheep arrived in Romania three days later. Mike visited later and gave a presentation on the stratification of the sheep industry which was very well attended. He reported back on his return that there was a lot of interest in the Bluefaced Leicesters. The two shearing rams were both recorded via the Sire Reference Scheme. One had an index of 203 with an exceptionally high muscle depth figure which put it in the top 5% of the scheme and the other had an index of 153 which put it in the top 25% of the scheme.

Today October 23rd, Mike called saying that he had received a further order for twenty rams and fifty females. Hopefully this could be the start of a growing export trade which is sorely needed to expand the market for our breed.



2008 Show



Balmoral Show Champion -
M/s Bell - Kempt View flock
(Judge - Tom Barr - Hobsland flock)



Royal Show Champion -
R S & J T Shaw - Brooksfield flock
(Judge - Elfyn Owen - Cernyw flock)

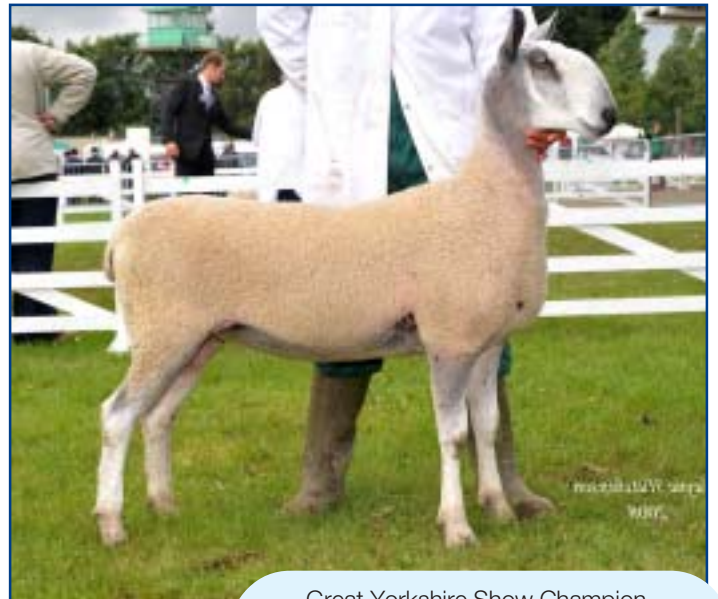


Royal Welsh Champion -
M C & G Roberts - Myfyrian flock
(Judge - Alec Bisset - Middle Dukesfield flock)

Champions



Royal Highland Champion -
D & J Cruikshank - Nithsdale flock
(Judge - Robert Neill - Rossiebank flock)



Great Yorkshire Show Champion -
A Fisher - Riggs Top flock
(Judge - Sid Ivinson - Addingham flock)



Royal Welsh Interbreed Pairs -
M C & G Roberts - Myfyrian flock
D P May - Derwenlas flock

Penrith Progeny



Overall Breed Champion

The judges, J Taylor from the Lochhill flock and C MacGillivray of the Red Cottage flock, both commented on the standard of the sheep and how much they had enjoyed their day.

Taking the champion ticket in the individual section was Martyn Archer, Carry House, with a ram lamb by his Heddon Valley tup, which sired the champion at last years Hexham sale and out of a ewe by the homebred T4 which is also the sire to the hat trick winner at the Royal Welsh from Merfyn Roberts who shares the £6400 T4 with Martyn.

The reserve champion was again another lamb, but this time a late May born gimmer from M/s Thomason from the Piel View flock. This sharp, sweet gimmer is out of a gimmer shearing by P3 Barlaes, which they thought was gelt until she lambed in the last week of May to the W6 Middle Dukesfield tup which they bought privately last year.

The champion in the progeny section came from Tristan Davidson of the Davy Shields flock with three gimmer shearlings by a Walton tup bought at Carlisle a couple of years ago. One of the sheep in three was the full sister to last years Champion at Carlisle sale and also the champion at Twice Brewed Show earlier this year too.

Stephen Crozier, Watersyke was the Border Raider this year, coming from Lockerbie and returning with the reserve progeny ticket as well as the reserve individual female too. The breeding behind these ewes was V3 Plas-y-Ward from H W Francis, which Stephen bought down in Bulth Wells and has used him on the Watersyke flock three times, gaining him Elite + status in the process. Stephen wasn't the only Scottish winner either as his nephew, Fraser Kennedy who was helping him took the young handler section too.

The Mule section is always strongly competed and this year was no exception, and showed an increase in the progeny side too, with around a dozen tups turning out with their progeny. Winning the progeny section was Neil Marston with three lambs sired by Snab X1, who also sired most of last years top priced Mule lambs at Carlisle, and continuing the great breeding again this year. Neil also took the individual Mule championship with a Mule lamb by a Jack Lawson tup which he purchased privately last year. It is the third year in a row that Neil has taken the Mule championship, and in the presence of some great competition, that takes some doing!



Reserve Overall



Champion Mule



Champion Mule Progeny Group

Show Results



Wayne H
20
Champion Progeny Group

Bluefaced Leicester Open Classes

Overall Breed Champion - R D Archer & Son

Reserve Overall Breed Champion - S Thomason

Aged Ram - 1. S Crozier, 2. R D Archer & Son

Shearling Ram - 1. and 2. C R & S E Hill, 3. S Crozier

Ram Lamb - 1., 2. and 3. R D Archer & Son

Ewe - 1. S Crozier, 2. T Davidson, 3. S Thomason

Gimmer - 1. T Davidson, 2. C R & S E Hill, 3. S Thomason

Ewe Lamb - 1. S Thomason, 2. S Thomason, 3. J Caton

Young Handler Awards - 1. Fraser Kennedy,
2. Isacc Thomason

Bluefaced Leicester Progeny Classes

Champion Progeny Group - T Davidson

Reserve Group - Three Ewes By Same Sire - S Crozier

Three Ram Lambs With Sire - 1. R D Archer & Son

Three Ewes By Same Sire - 1. S Crozier

Three Gimmers By Same Sire - 1. T Davidson

Three Ewe Lambs With Sire - 1. S Crozier

Mule Progeny Classes

Champion Progeny Group - N Marston

Reserve Group - R D Archer & Son

Thos Edmundson Cup For Champion Mule Ewe Lamb -
N Marston

**Penrith Farmers & Kidds Trophy For Overall Champion in
the open classes** - N Marston

Three Mule Ewe Lambs With Sire Swaledale Type -
1. N Marston, 2. A Barnes, 3. N Marston

Three Mule Ewe Lambs With Sire Blackfaced Type -
1. R D Archer & Son, 2. M W & C M Ridley

Young Handler Awards - 1. Harry Crocker, 2. Marion Porter,
3. Adam Brown

2008 Welsh



Overall Breed Champion



Reserve Overall

It was a change back to the original venue for the show, and what a day we got for it. Glorious sunshine and good crack all round.

Judging the Bluefaced Leicester proceedings was Glenn Shapiro from the Hazelwood flock, who had a tough job on her hands as the competition was so fierce. At the end of the singles classes it was, once again, the great ewe from Merfyn Roberts, Myfyrian. Fresh from winning the title at the Welsh Show, she once again stood out from the crowd. She is by the £6000 Carryhouse T4, which has been breeding consistently well for both Merfyn and Martin Archer.

It was Myfyrian breeding again that took the male championship and reserve overall too, but in the hands of a different breeder. Dewi Jones, Plas Pigot with Myfyrian Y19. This powerful tup was bought 2 years ago at Carlisle, and is by Cocklaw T1 and out of a ewe by the Carryhouse R1. He was also classified Elite+ by the classifiers on the strength of his progeny.

In the progeny section, again the competition was tough with around ten entries in one class, giving Glenn plenty of food for thought in selecting her winners. Taking the overall title was Elfyn Owen with his homebred tup, Cernyw Y1, which was classified Elite+ last year, and 3 gimmer lambs sired by him. He is getting well on the male side too, as the reserve male champion was a tup lamb of Elfyn's also by the Y1.

It was a sense of déjà vue for Aled Jones, as once again he took the reserve ticket in the progeny section, for the third time in a row at the Welshpool venue. This time his classy ewes by his best stock tup, Scrainwood T29 Elite+. He has done well at the shows too, taking the male champion at Anglesey on his first outing. One of the ewes in the group was also the mother to Aled's highest priced lamb, which he sold at Bulth for 1850 gns a couple of years ago.

In the Mule section Michael James was the dominating force. Kevin Parry, the judge, picked out Michaels three Mule gimmers out of Beulah ewes, and sired by one of Michaels homebred tups, Duhonw X20, which carries his fathers powerful carcass, being a son of the noted Duhonw R3.

Overall, it was a good show of sheep, with some great sheep on show, and thanks must also go to the sponsor, Natural Stockcare.



Champion Mule Progeny Group



Young Handlers

Progeny Show



**Champion
Bluefaced Leicester
Progeny Group**

Bluefaced Leicester Open Classes

Overall Breed Champion & Female Champion -
M C Roberts with a ewe

Reserve & Male Champion - D Jones with a aged ram

Reserve Female Champion - M James with a gimmer

Reserve Male Champion - E Owen with a ram lamb

Aged Ram - 1. D Jones, 2. M James, 3. S A & R P Jones

Shearling Ram - 1. E Owen, 2. P May, 3. M Davies

Ram Lamb - 1. E Owen, 2. S A & R P Jones, 3. D Jones

Ewe - 1. and 2. M C Roberts, 3. S A & R P Jones

Gimmer - 1. M James, 2. M C Roberts, 3. D W P Davies

Ewe Lamb - 1. and 2. E Owen, 3. M Davies

Young Handlers Awards -

Class 13 - 1. Catrin Jones, 2. James Williams, 3. Henry James

Class 13A - 1. Ilan James, Elis Owen

Bluefaced Leicester Progeny Classes

Champion Progeny Group - E Owen

Reserve Progeny Group - Three Ewes By Same Sire
- S A & R P Jones

Best Skinned Sheep - S A & R P Jones with a aged ram

Three Shearling Rams By Same Sire - 1. D Jones

Three Ram Lambs With Their Sire - 1. D W P Davies & P May,
2. M Davies, 3. D Jones & M Roberts

Three Ewes By Same Sire - 1. S A & R P Jones

Three Shearling Ewes By The Same Sire - 1. E Owen,
2. D W P Davies & P May, 3. M Davies

Three Ewe Lambs With Their Sire - 1. E Owen,
2. S A & R P Jones, 3. D W P Davies & P May

Ram Lamb Or Ewe Lamb With Its Sire - 1. E Owen,
2. S A & R P Jones, 3. D W P Davies & P May

Mule Open Classes & Progeny Groups

One Shearling Ewe - 1. and 2. M James, 3. E Owen

One Mule Ewe Lamb (Coloured) - 1. M James, 2. E Owen,
3. D Jones

One Mule Ewe Lamb (Whitefaced) - 1, 2 and 3. E Owen

One Mule Ewe Lamb (Any Other Type) - 1. M James

Three Mule Ewe Lambs With Their Sire (Coloured) -

1. M James, 2. D Jones, 3. E Owen

Three Mule Ewe Lambs With Their Sire (Whitefaced) -
1. E Owen

Mule Champion Progeny Group - M James

**Reserve Progeny Group - Three Mule Ewe Lambs With Their
Sire (Whitefaced)** - E Owen

2008 Co. Antrim Progeny Show



Overall Champion - A ewe from S Laverty



Champion Mule Progeny Group

Bluefaced Leicester Open Classes

- Overall Breed Champion** - S Laverty with a ewe
- Reserve Overall Champion** - T Wray with a shearling ram
- Ram Any Age** - 1. S Hammond, 2. S Laverty, 3. T Wray
- Shearling Ram** - 1. T Wray, 2. S J C & K Montgomery, 3. T Wray
- Ram Lamb** - 1. S Hammond, 2. T Wray, 3. S Laverty
- Ewe** - 1. S Laverty, 2. T & W Bell, 3. J Aiken
- Gimmer** - 1. T Wray, 2. S Hammond, 3. J Aiken
- Ewe Lamb** - 1. S Hammond, 2. T Wray, 3. J & A Minnis
- Group Of Three** - 1. S Laverty, 2. T Wray, 3. S Hammond

Bluefaced Leicester Progeny Classes

- Champion Group - Three Shearling Ewes With Sire** - T Wray
- Reserve Group - Three Ram Lambs With Sire** - T Wray
- Three Gimmers With Sire** - 1. T Wray, 2. S Hammond, 3. T Bell
- Three Ram Lambs With Sire** - 1. T Wray, 2. A J C & K Montgomery
- Three Ewe Lambs With Sire** - 1. T Wray, 2. S Hammond

Mule Open Classes

- Champion & Reserve Mule** - F Loughridge
- Ewe** - 1. M Wright, 2. M/s McCormick Bros, 3. M Wright
- Gimmer** - 1. 2. and 3. F Loughridge
- Ewe Lamb** - 1. F Loughridge, 2. and 3. D Woodburn
- Group Of Three** - 1. F Loughridge, 2. M Wright, 3. D Woodburn

Mule Progeny Classes

- Three Ewe Lambs With Sire** -
1. D Woodburn, O Loughran, 3. M/s McCormick Bros
- Ewe lamb Out Of A Swaledale Ewe** -
1. D Woodburn, 2. M Wright, 3. D McClintock



www.livestock-sales.co.uk
The UK's leading livestock marketing company

ANNUAL IN-LAMB
SHOW & SALE
OF REGISTERED
BLUEFACED LEICESTER
FEMALES

MONDAY 19th JANUARY 2009
(entries close Friday 2nd January)

— and LAZONBY —
Autumn Sales of Rams & Females at
CARLISLE, KIRKBY STEPHEN

AUCTIONEERS
HARRISON & HETHERINGTON LIMITED
Bordenway Mart, Rosehill, Carlisle, CA 2 2 5
Tel - 01228 640924 Fax - 01228 640921

2008 Flock Competition Results

Overall Stock Ram - 1. McCormick Bros and T Wray,
2. J Minnis, 3. B Brown and B Radcliffe

Small Flock Results

Ewes - 1. B Brown, 2. B Radcliffe, 3. W Adams

Ewe Lambs - 1. B Brown, 2. B Radcliffe, 3. W Adams

Champion Small Flock - B Brown

Large Flock Results

Ewes - 1. J Minnis, 2. T Wray, 3. McCormick Bros

Ewe Lambs - 1. T Wray, 2. McCormick Bros, 3. M Wright

Champion Large Flock - T Wray

Overall Champion - T Wray



Ewes lambs from T Wray's champion flock

Annual Dinner Dance



Picture A - Seamus Laverty and family with silverware for summer shows and the Overall Show Points Award with Jimmy Bell, Chairman, Scottish region and Seamus O’Kane, Chairman, Northern Ireland region.



Picture B - Mule Prizewinners - Seamus O’Kane (Antrim - ewe lambs), John Murphy (Ballymena - Mule hoggets), Robert Loughridge (Loughgiel - ewe lambs), Eamon McCormick (Cushendun and Cushendall - ewe lambs), Wendy Bell and Jim Harkin (Draperstown - ewe lambs).



Picture C - Jimmy Delargy (Sponsor), Phil McCormick - Champion at Ballymena Premier Pedigree Sale, Mary Delargy and Seamus O’Kane.

Southern Ireland Ram Sale

The sale at Ballinrobe in Co Mayo was, in retrospect, fairly successful. In a week which had seen a nose dive in livestock prices, hill bred mule lambs in the concurrent sale fetched as little as 50 euros, but there seemed to be some confidence in their Bluefaced Leicester sires.

While there was little interest in females (about a third of the entry), shearing rams averaged a little over 500 euros and ram lambs 420 euros. The sale was topped by a Mask View hogget at 780 euros. David Murphy's sparky little Ballyglass champion made 600 euros – in the pen. Locally the preference is to do deals on the quiet, rather than at the ringside!

Our flocks are scattered all over the country, so it was good to meet, compare stock and discuss our peculiarly local problems: the strong competition from other ewe sire breeds, the need to be less dependent on Northern bloodlines. What is suitable for Scottish Blackface is not necessarily the right choice for our Blackface Mountain ewes.

Import regulations make it almost impossible to access the breadth of type within the breed, but we're investigating in preparation for next year.

We will probably hold a sale again. Ballinrobe is awkward to get to, but is the heart of the Mule breeding area. We must also consider the



Ballinrobe Sale Champion - 4217 A3 (by 2800/V15 Nithsdale) - bred and exhibited by D M Murphy, Ballyglass

needs of those using Bluefaced rams for other purposes, for example, invigorating commercial Suffolk flocks that have gone too "soft". The result? A big, handsome, milky and prolific ewe that has a huge appetite. The customer, of course, is always right!

2008 Classified Rams

980/Y1 Hewgill Elite Plus Bred by M/s Lord

Exhibited by A Barnes

2399/Y8 Watersyke Elite Plus Bred and exhibited

by S J Crozier

1503/X19 Greenriggs Elite Plus Bred and exhibited by M/s Dent

1503/X20 Greenriggs Elite Plus Bred and exhibited by M/s Dent

1183/Y19 Myfyrian Elite Plus Bred by M C Roberts

Exhibited by D Jones

3419/Y8 Wellan Elite Plus Bred by R A Lund

Exhibited by D Jones

2188/Z3 Grugoer Elite Plus Bred and exhibited by M Davies

1463/Y1 Mossvale Elite Plus Bred by A & J Minnis

Exhibited by M Davies

3822/Z2 Derwenlas Elite Plus Bred and exhibited by D P May

1411/X20 Duhonw Elite Plus Bred and exhibited by M James

1070/Z7 Cernyw Elite Plus Bred and exhibited by E Owen

2571/Z1 Knockstacken Elite Plus Bred and exhibited by T Wray

1896/Z2 Aughafoy Elite Plus Bred by D J Lyttle

Exhibited by T Wray and McCormick Bros

2216/Z32 Brablagh Elite Plus Bred and exhibited

by McCormick Bros

1335/Z2 Carnew Elite Plus Bred by J Aiken

Exhibited by J Minnis

1763/Y1 Beech Lodge Elite Plus Bred by J Brown

Exhibited by M/s Brown & Radcliffe

3391/X1 Somerford Elite Bred and exhibited by L Norris

1939/Z18 Hazelwood Elite Bred and exhibited by G Shapiro

1939/Z6 Hazelwood Elite Bred and exhibited by G Shapiro

1939/Z1 Hazelwood Elite Bred and exhibited by G Shapiro

1939/Z12 Hazelwood Elite Bred and exhibited by G Shapiro

980/Y7 Hewgill Approved Bred by M/s Lord

Exhibited by D Jones

Sheep Farmers must make good use of clover

In South West Scotland it has been a good year for grass growth – especially clover based swards. At a time of record high fertilizer prices and high fuel charges more of our customers are looking towards clover to help sustain animal performance and profitability. It is also worth noting 1T of Carbon dioxide is emitted for each 1T of nitrogen produced in an ammonium nitrate plant.

Modern varieties of both red and white clover are higher yielding, have greater persistence, are more efficient at fixing nitrogen and are more reliable than some of the older traditional “wild types”.

Increasingly these clovers are being used within progressive forage based enterprises to both save nitrogen and also produce high quality protein. In general red clovers are best suited for cutting then lamb fattening and white clovers for grazing with some of the larger leafed varieties also suitable for cutting. Red clover fed to ewes during the flushing period can reduce fertility by up to 15% - perhaps an advantage for BFL breeders! .

The improved animal performance of clover based systems can be summarized as: -

DIGESTIBILITY - On average the “D” value of white clover is 10 units higher than perennial ryegrass.

NUTRIENTS - Clover produces a high protein forage (27% cp) with a high mineral content esp. calcium, magnesium, cobalt and selenium.

HIGHER DM INTAKE - Higher intakes on a clover system improves lamb liveweight gains by 69 g/day, beef cattle by 300 g/day and dairy cows can have a 15% improvement in milk yield.

These benefits are especially relevant in mid season when the ryegrass is less palatable than the clover based system. Good establishment of white clover can produce up to 250 kg/HA of Nitrogen – especially where the new varieties are used. At present over 25,000 breeding lines of clover are being studied in the Northern hemisphere to establish the best varieties and also which varieties best compliment each other.

One of the best new varieties to emerge in recent years is **CRUSADER** a small/medium type white clover from New Zealand. This variety is very dense, highly persistent with an extremely long growing season making it ideal for all intensive grazing systems.

The aim of successful clover establishment is to achieve a minimum of 150 clover seedlings per square metre within a grass/clover ley.

These seedlings should be sown by mid August to allow the clover to begin producing stolens (runners) before winter. It is also vital to have a soil ph of 6.0 – 6.5 to allow the root bacteria (RHIZOBIUM) to fix nitrogen efficiently. The clover is best broadcast on to a firm seedbed. - drilling can put the clover seeds down too deep and greatly reduce establishment. Pests and diseases also need to be controlled. Phosphate and potash levels should be tested and corrected before establishment. Reintroduction of clover in existing pasture can be achieved using spring type harrow and broadcasting the seed.



Stewart Bryson

Once the clover is well established it is important to assess the clover and stolen growth in the spring to determine the optimum management strategy. Intensive grazing can be used as a brake on excessive clover development or the frequency of cutting can be reduced to help increase clover content. Do not overgraze the sward in winter to help protect the clover stolens from frost damage – ideally grass should be maintained at about 3 – 4 cm. Overgrazing during wet weather will also damage the clover stolens by poaching.

In the present financial environment the grassland farmer must grasp the nettle (or clover) and make good use of the new varieties of clover to reduce the dependence on bought in fertilizer and also improve animal performance.

Est
1978

Old Hemley

Flock
2070

Bluefaced Leicesters



Old Hemley A5 - Sold at Hawes 2008 for £3,000

Females For Sale - sired by/in-lamb to:

Y1 Kirkby Redgate - £14,500 Hawes 2006,

Z2 Hewgill - £5,600 Hawes 2007,

Y1 Midlock - £8,500 - Sire of the highest priced ram lambs at Hawes, Carlisle, Penrith and Built Club Sale.

Contact - Stephen or David on 01874 636509 or 0796 8124441

Cwmlliw, Trallong, Brecon, Powys LD3 8HP

An American Experience To Remember For David



David Cruikshank with Brenda Lelli

I have just returned from judging Bluefaced Leicesters and Mule sheep in America which I must say was one of the most memorable experiences of my life. To be honest, I didn't know what to expect. On the Saturday I judged the Bluefaced Leicester classes and as soon as the sheep entered the ring the steward handed me a microphone and gave me the daunting task of a running commentary on judging and reasons for the placings. I'm sure the audience didn't understand my Scottish accent.

After the judging was finished, I was bombarded with questions about the Bluefaced Leicester.

As well on the Saturday, I judged the Mule sheep. These were by a Bluefaced Leicester ram out of all kinds of ewes.

There were also Progeny classes for the sire and his offspring which proved very interesting, and showed by the number of people waiting afterwards to ask questions for two hours.

People were very keen to learn about the sheep industry in the UK. The biggest difference between the UK and the USA is the wool, as they breed mostly for wool as they currently earn between £15-20 per fleece.

Finally, I must thank all the people who made it possible for my visit to America. Special thanks must go to my hosts Brenda and Mark Lelli for their wonderful hospitality. What a great experience.



A class of sheep lined up to be judged in America



Many questions are put forward for David to answer

New Association Trustee Appointed



Merfyn Roberts,
Myfyrian flock

Annual Dinner Dance

Saturday 7th February 2008 at 7.30 for 8 pm

At The Tynedale Auction Mart, Hexham

“Big Dave & His Elastic Band”

Tickets - Price £25 (First come first served)

Tickets Available from:
Dennis Lumley: 01434 673204/
Nicky Robinson: 01434 681362
or the office: 01644 460647

Flock Books For Sale

1971, 1973-1994, 1996, 1997, 2000, 2001, 2006, 2007

These are £10 each including P & P.
Please phone or email the office.

1986 to 1997

Contact Mr Roberts (North Wales) for
price on 07870 353886

1982 - 2001

Contact Mrs Clements (Hawes area) for
further details on 01539 728982.

Does anyone have a copy of Number 1 or 7
in the flock books, which they are willing to sell?
If so, please contact the office with details.

The Tup Sale

He's not the best tup I've sold, but he's the best bred tup I've sold. Oh Yeah, like I'm going to fall for that one again.

Out of his pen and up the alley. It's great is a tup sale, the thrill of the chase! But be careful, it may be you that's being hunted.

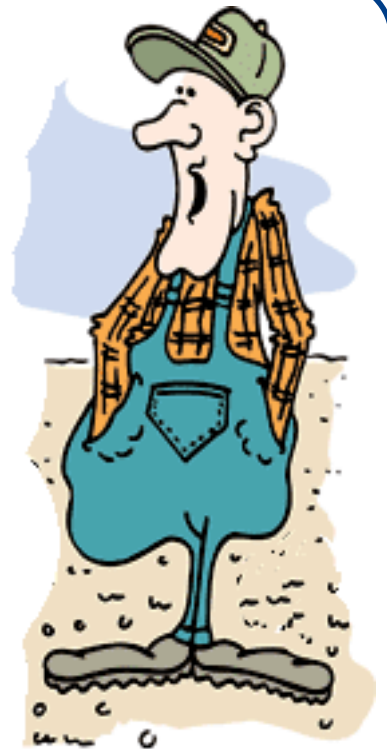
I give you the case of "The Old Show Ewe" often referred to in hushed tones, the imaginary magnificence of the afore said beast, can contrast markedly to the very real deficiencies of her son.

But you're hooked, not me! I wriggle free, out again into the main current, temptation everywhere, and everyone is so friendly. Lots of time to chat, the weather, all sorts. Ha, I'm not falling for it. I'm slippery to slipper for you pal!

Had a near miss though, I was nearly caught on a variation on "The Old Show Ewe" theme. I thought I'd heard them all, out of sister of, mother of, and daughter of. But I wasn't expecting to be looking at a tup that was out of a better ewe than "The Old Show Ewe". But, was never shown because she knocked her teeth out in the dipper! Get out! Get out! Get out!

I'm on the way home now and boy, did I get a bargain. OK, I paid a bit, no a lot, more than I expected, but that's because my tup has all the qualities required in the modern Bluefaced Leicester - big, wild and according to his previous owner, bred specifically with longevity in mind. Longevity that's the thing, and there's another thing, it's gone very quiet in the back.

Happy Joe



2008 Sales



Kelso

M J Snaith, Clennell flock - £6,600
To R Bell, Teviot and W A Penny, Bothwell



Castle Douglas

J Kerr, Craigskean flock - £6,000
To M/s Wight, Midlock and C & D Hall, Firth



Ruthin

J McLeod, Wanstead - £520
To C Evans, Corwen



Hexham

A G & D Bisset, Middle Dukesfield - £3,200
To N L & E J G Sinclair, Shielsknowe



Penrith

J Lawson, Hundith - £4,200
To J C Pedley, Yore House



Carlisle

J Lawson, Hundith - £2,800 - To W C Porter,
Riddings, and A C Hutchinson, Redhill

Top Prices



Ballymena

E McKeegan, Glenane - £5,040
To J Bell, Cottage, S Park, Dalpeddar



Builth Wells

G P Williams & Co, Elian flock - £17,850
To J McLeod, Wanstead



Hawes

J Lawson, Hundith - £11,500
To W A & A Booth, Smearsett



Welshpool

S A Harding, Shrewbridge - £735
To G L Jones, Tycloch

Other 2008 Top Prices

Welshpool

M Davies, Grugoer - £735 - To T W Anwyl, Maesmednisiol

Lanark

J W Hamilton, Kirkton - £520 - To R Taylor, Abington

Ballymena Second Sale

G Walsh, Quoile - £1,575 - To J Stewart, Co Antrim
T Crowe, Learmore - £1,575 - To J & W O'Kane, Ballymena

Hereford

T R Harris, Bonvilston - £325 - To Mr Davies, Llanpicca



Hazelwood Disperal

G Shapiro, Hazelwood - £2,300 -
To P Howell, Longmynd

Bluefaced Leicester Sheep Breeders' Association Register Of Rams And Ram Lambs sold for £1,000

and over at Association Sales 2008 And Sales Show Champions

Kelso – 12/09/08 - Aged Rams & Shearlings

Price	Ear No	Vendor	Prefix	Buyer
£2,800	1621/Z1	A Warnock	DREVA	R Loughery, 25 Lislane Road, Co Londonderry
£3,600	1621/Z2	A Warnock	DREVA	I Sharp, Longcroft, Lauder, Berwickshire
£1,800	1621/Z6	A Warnock	DREVA	A S McQuistin, Barnshangan, Newton Stewart
£1,600	1621/Z5	A Warnock	DREVA	D Woodburn, 57 Crevamoy Road, Ballymena
£1,200	1621/Z7	A Warnock	DREVA	Duke of Montrose, Gartincaber, Drymen, Glasgow
£1,000	1621/Z8	A Warnock	DREVA	Childrens Settlement, per Mr S Little, Upper Chatto
£1,000	1621/Z3	A Warnock	DREVA	R Loughridge, The Hill, 41 Friary Road, Ballymoney
£1,000	1521/Z5	R H Bell & Co	TEVIOT	F J & S C Ross, The Arr, Lethen, Nairn
£1,000	2801/Z5	N & J McQuistin	AIRYOLLAND	W Kerr, Sauchrie Mains Farm, Maybole, Ayrshire
£1,500	2801/Z11	N & J McQuistin	AIRYOLLAND	H Macaskill, Woodhall Farm, Innerwick, Dunbar
£3,000	1386/Z2	J & J Cunningham	PARKGATESTONE	H Macaskill, Woodhall Farm, Innerwick, Dunbar
£1,800	1386/Z1	J & J Cunningham	PARKGATESTONE	Stair Estates, Rephad, Stranraer
£1,700	1386/Z3	J & J Cunningham	PARKGATESTONE	S Hamilton, Tower Farm, Sanquhar, Dumfriesshire
£1,300	1386/Z10	J & J Cunningham	PARKGATESTONE	Duke of Montrose, Gartincaber, Drymen, Glasgow
£2,000	1386/Z16	J & J Cunningham	PARKGATESTONE	R Loughridge, The Hill, 41 Friary Road, Ballymoney
£1,300	1645/Z4	I Sharp	NEWBIGGING WALLS	G McDougall, Bassendean Gordon, Berwickshire
£1,100	2690/Z1	J Bell	COTTAGE	E Burnett, Rhynaclach Farm, By Kippen, Stirling
£3,100	1538/Z38	J Wight & Sons	MIDLOCK	R D McInnes, Graystoneknowe Cottage, Ayrshire
£2,800	1538/Z7	J Wight & Sons	MIDLOCK	A J Kennedy, Mitchelhill Farm, Broughton, Biggar
£2,800	1538/Z8	J Wight & Sons	MIDLOCK	R Loughery, 25 Lislane Road, Co Londonderry
£1,100	1538/Z10	J Wight & Sons	MIDLOCK	R Loughery, 25 Lislane Road, Co Londonderry
£1,300	1538/Z23	J Wight & Sons	MIDLOCK	D Stewart, Crookboat Farm, Sandilands, Lanark
£1,400	1538/Z25	J Wight & Sons	MIDLOCK	T R Anderson, Nether Guelt, Cumnock, Ayrshire
£1,100	1538/Z33	J Wight & Sons	MIDLOCK	R D McInnes, Graystoneknowe Cottage, Ayrshire
£1,000	1538/Z34	J Wight & Sons	MIDLOCK	E Burnett, Rhynaclach Farm, By Kippen, Stirling
£1,000	1538/Z39	J Wight & Sons	MIDLOCK	E Burnett, Rhynaclach Farm, By Kippen, Stirling
£1,200	2280/Z2	D L & S Currie	BRAEGARRIE	B & A Clark, Duncanziemere, Cumnock, Ayrshire
£2,000	1574/Z14	C & D Hall	FIRTH	Burncastle Farming Co, Lauder, Berwickshire
£1,000	1574/Z12	C & D Hall	FIRTH	Glenree Farm, Ross Road, Isle of Arran
£2,000	1574/Z5	C & D Hall	FIRTH	Burncastle Farming Co, Lauder, Berwickshire
£1,200	1574/Z10	C & D Hall	FIRTH	G R & M K Bell, Borthwickbrae Farm, Hawick
£1,000	1574/Z21	C & D Hall	FIRTH	Crowhill Farms, Bardonmill, Hexham
£1,000	1574/Z31	C & D Hall	FIRTH	D Rock, Knock-O-Ronald, Gargunnoch, Stirling
£1,000	3744/Z1	Professor W A Penny	BOTHWELL	Crowhill Farms, Bardonmill, Hexham
£1,000	1414/Z10	J W Hamilton	KIRKTON	J W Hogg, Longyester Farm, Haddington, E Lothian
£1,100	1414/Z1	J W Hamilton	KIRKTON	E Hewitt, North Logan, Sorn, Mauchline
£2,200	1666/Z7	A Minto & Son	BANK FARM	J Hunter & Sons, The Steel Farm, Hexham
£1,000	1666/Z21	A Minto & Son	BANK FARM	A McQuistin, Barnshangan Farm, Newton Stewart
£1,900	1666/Z8	A Minto & Son	BANK FARM	A K Brook, Carscreugh Farm, Newton Stewart
£1,100	2382/Z1	P W & D S Hedley	RICCALTON	J & S Gardiner, 24 Biggar Road, Carnwath, Lanark
£1,000	3527/Z1	A G Coulter	DEANHEAD	D Woodburn, 57 Crevamoy Road, Ballymena
£1,250	3274/Z7	J Kay & Sons	HARTSIDE LAMMERMUIR	B Nicholls, Lower East Milton Farm, Devon
£1,400	3274/Z11	J Kay & Sons	HARTSIDE LAMMERMUIR	M/s Cockburn & Partners, Kingside Farm, W Linton
£1,000	3274/Z3	J Kay & Sons	HARTSIDE LAMMERMUIR	J W Hogg, Longyester Farm, Haddington, E Lothian
£2,000	2625/Z1	A McClymont	KIRKSTEAD	C Atkinson, Ashintully Castle, Blairgowrie
				M/s W Dunlop, Elmscleugh Farm, E Lothian
				D E & K Gray, Boreland, Eddleston, Peebles

£1,100	2625/Z2	A McClymont	KIRKSTEAD	M/s S McClymont & Son, Tinnis Farm, Selkirk
£3,100	2625/Z7	A McClymont (Champ)	KIRKSTEAD	Mr Purvis, Yeavering Farm, Northumberland
£1,000	2233/Z21	D E & K Gray	DRINKSTONE	R & R E Everett & Son, Kirkley House Farm, B Auc
£1,150	3764/Z7	G Dixon	ALWINTON	A Fotheringham, West Hall, Bridge of Earn, Perth
£1,000	125/Z29	G Smith & Sons	WEST BOLTON	H Cockburn & Partners, Kingside, Peebleshire
£1,000	125/Z25	G Smith & Sons	WEST BOLTON	R King & Sons, Gospel Hall Farm, Roxburgh
£1,050	125/Z26	G Smith & Sons	WEST BOLTON	Lilburn Estates Farming Partnership, Wooler
£1,400	175/Z17	J Herdman	EDLINGHAM	E Milburn & Son, Holling Hill, Morpeth
£1,200	175/Z1	J Herdman	EDLINGHAM	A Brown, MacQueston, Thornhill
£1,050	175/Z4	J Herdman	EDLINGHAM	T & J W Renner, Yetlington Farm, Northumberland
£2,600	3989/Z24	M J Snaith	CLENNELL	M/s McArthur, Arnicle Farm, Glenbarr, Argyll
£6,600	3989/Z16	M J Snaith	CLENNELL	J Kay & Sons, Hartside, Lauder, Berwickshire
£1,800	3989/Z20	M J Snaith	CLENNELL	R Bell, Roxburgh Mill, Kelso, Roxburghshire
£1,000	3989/Z6	M J Snaith	CLENNELL	Prof. W A Penny, Bothwell Farm, Duns, Berwickshire
£1,100	3989/Z4	M J Snaith	CLENNELL	G Smith & Sons, Westbolton, Northumberland
£1,100	3989/Z25	M J Snaith	CLENNELL	Mr Sutherland, Hill House, Oxton
£1,150	3989/Z8	M J Snaith	CLENNELL	E Owen, Ffritharw, Llanddoged, Llanrwst
£1,100	3989/Z12	M J Snaith	CLENNELL	J & M Turner, Kildalloig Farm, Campbeltown
£1,000	3989/Z31	M J Snaith	CLENNELL	E P Hughes, Porth Llamanno
£1,000	3989/Z28	M J Snaith	CLENNELL	J Proctor & Sons, Nether Aucharnie, Aberdeenshire
£1,150	1792/Z1	C R Purvis	YEAVINGER	A S Owen & Sons, Garreg Farm, Dolfor, Newtown
£1,000	119/Z5	M C Robinson & Son	COCKLAW	W Walton & Sons, Otterburn, Newcastle-Upon-Tyne

Ram Lambs

£1,200	1538/A5	J Wight & Sons	MIDLOCK	M C Roberts, Myfyrian Isaf, Gaerwen, Anglesey
£1,000	1538/A25	J Wight & Sons	MIDLOCK	R C Woodburn & Son, Laidlawsteel, Galashiels
£2,000	1574/A2	C & D Hall	FIRTH	M W & C M Ridley, Shitlington Hall, Hexham
				R M English, Browns Leazes, Wark Hexham

Castle Douglas – 19/09/08 - Aged Rams & Shearlings

£1,200	859/Z14	A M Brown	DRUMHUMPHRY	P W Logan & Son, Brockloch Farm, Cumnock
£1,000	1257/Z3	M & C Drummond	CASSINGTON	W D Hyslop & Sons, Gowlands, Barhill
£1,000	2329/Z6	J & M Kerr	CRAIGSKEAN	P W Logan & Son, Brockloch Farm, Cumnock
£2,800	2329/Z1	J & M Kerr	CRAIGSKEAN	G McDonald, Stobo Home Farm, Peebles
£1,050	2329/Z15	J & M Kerr	CRAIGSKEAN	Mr Frame, Glenview, Biggar
£1,100	3749/Z29	J Park	FOREBRAE	J McWhirter & Son, Grimet Farm, Dalmellington
£3,300	2571/Z22	A Brown	MACQUESTON	J Hunter & Co, Gargowan, Ochiltree
£1,000	2571/Z12	A Brown	MACQUESTON	R Loughridge, The Hill, Co Antrim
£1,100	2571/Z14	A Brown	MACQUESTON	C R Milligan, Aberdeen
£1,050	2571/Z32	A Brown	MACQUESTON	H W Gough-Cooper, Fraserford, Dumfries
£1,400	912/Z1	L W & M J Parker	HALLMANS	J McWhirter & Son, Grimet Farm, Dalmellington
£1,300	912/Z2	L W & M J Parker	HALLMANS	A Brown, MacQueston, Thornhill
£2,600	912/Z10	L W & M J Parker	HALLMANS	S Mitchell, Mains of Larg, New Luce

Ram Lambs

£1,000	3685/A1	A Hamilton	MARR	W F Logan, Maxwelston, Dailly, Girvan
£1,000	2565/A1	A Bastian	ROWANDALE	Mr Ferguson, Kerry Cottage, Blairgowrie
£1,300	2690/A1	S Park & E Mills	S P DALPEDDAR	J Warnock & Sons, Dreva, Biggar
£1,000	3331/A29	J Bell	COTTAGE	R Wallace & Co, Mains Of Collin, Castle Douglas
£2,500	2329/A1	J & M Kerr	CRAIGSKEAN	J Bell, Whelphill Farm, Crawford, Biggar
£6,000	2329/A2	J & M Kerr	CRAIGSKEAN	A Minto & Son, Townhead Farm, Peebleshire
£2,100	2329/A3	J & M Kerr	CRAIGSKEAN	N Laing, Tinto View House, Lanark
£2,200	281/A1	R D Archer & Son	CARRY HOUSE	J Wight & Son, Rowangreen, Biggar
				C & D Hall, Lillyburn, Penicuik
				R J McTurk, Glenhowl, Dalry
				R McClymont, Kirkstead, Selkirk
				W J Coltherd, Foulshiels Farm, Selkirk

£1,000 and over register

£2,000	281/A7	R D Archer & Son	CARRY HOUSE	P B Adams & Co, Clugston, Newton Stewart J Miller, 4 Riverbank, Newton Stewart
£1,500	840/A1	R Neil (Champ)	ROSSIEBANK	M Gray, Low Espley, Morpeth
£1,300	840/A10	R Neil	ROSSIEBANK	W Steel & Son, Laigh Langmuir, Kilmarnock
£1,100	840/A3	R Neil	ROSSIEBANK	J & A McCulloch, Glentoo, Castle Douglas
£1,100	840/A5	R Neil	ROSSIEBANK	D Cruikshank, Broomisle Cottage, Castle Douglas
£1,000	3725/A1	S Mitchell	MAINS OF LARG	K Smith, Low Arkland Farm, Castle Douglas
£1,000	3725/A3	S Mitchell	MAINS OF LARG	T W Hamilton & Son, Kirkton of Crawford, Biggar
£3,400	2571/A2	A Brown	MACQUESTON	J Warnock & Son, Eastfield of Couter, Biggar
£1,400	2571/A17	A Brown	MACQUESTON	D A & M A Brown, Agglethorpe Hall, Leyburn, N Yorks
£2,100	1538/A3	J Wight & Son	MIDLOCK	Mr McGregor, Burnhead, Kilsyth
£1,100	1538/A4	J Wight & Son	MIDLOCK	A Brown, MacQueston, Thornhill
£3,200	1538/A26	J Wight & Son	MIDLOCK	K Park & Sons, Dalpeddar, Sanquhar
£2,000	1538/A27	J Wight & Son	MIDLOCK	S Mitchell, Mains of Larg, New Luce
£1,500	1257/A4	M & C Drummond	CASSINGTON	R Loughridge, The Hill, Co Antrim
£1,500	1257/A24	M & C Drummond	CASSINGTON	R Anderson, Ardoch, Thornhill
£1,000	1257/A2	M & C Drummond	CASSINGTON	S Hamilton, Tower Farm, Sanquhar
£1,100	4024/A1	M Gray	ESPLEY	A Brown, Drumhughy, Castle Douglas

Ballymena – 20/09/08 - Aged Rams & Shearlings

£2,100	3397/Z10	C A Coulter	CARRICK ROCK	H McKenna, 15 Brackaghreilly Road, N Ireland
£1,995	2951/Z18	C A Coulter	CARRICK ROCK	V Kitson, 40 Spring Road, Northern Ireland
£1,260	3294/Z9	J Holden	BLAIRMOUNT	M Workman, 97 Deerpark Road, Larne, Co Antrim
£1,207.50	4235/Z2	E McKeegan	GLENANE	M Walsh, Knockfin, Westport, Co Mayo
£2,625	1691/Z4	R Loughridge	ORRAVALE	O Loughran, Dunnamore, Cookstown, Co Tyrone
£4,200	1458/Z3	R Loughridge	ORRAVALE	A & H Christie, 76 Benvardeen Road, Co Antrim
£1,050	1563/Z23	R Loughridge	ORRAVALE	Mr McKelvey, 15 Main Street, Plumbridge
£2,940	1691/Z5	R Loughridge	ORRAVALE	R Loughery, 25 Lislane Road, Co Londonderry
£3,255	22/Z5	R Loughridge	ORRAVALE	O Loughran, Dunnamore, Cookstown, Co Tyrone
£1,050	3634/Z4	A Christie	THE FIELDS	H McNeill, The Park, Ballymena, Co Antrim
£1,680	2216/Z32	McCormick Bros	BRABLAGH (Champ)	J J McAllister, 141 Glendun Road, Ballymena
£1,417.50	2216/Z31	McCormick Bros	BRABLAGH	G Shaw, 44 Anniscarn Road, Moneymore
£1,785	3582/Z4	S Duncan	HILLVALE	R Kerr, 168 Canning Grove, Crumlin, Co Antrim
£1,260	4103/Z17	T Crowe	LEARMORE	S Hunter, 101 Causeway Road, Co Antrim
£2,310	4103/Z5	T Crowe	LEARMORE	J Adams, 139 Cloughwater Road, Ballymena
£1,680	4103/Z10	T Crowe	LEARMORE	J Mills, 43 Starbog, Kilwaughter, Larne, Co Antrim

Ram Lambs

£2,100	4145/A24	T S Hammond	SANDHOLES	R Smyth, 25 Scroggy Park, Co Londonderry
£1,365	4145/A20	T S Hammond	SANDHOLES	I Smyth, 42 Terrydoo Road, Co Londonderry
£1,155	4146/A1	A J C & K Montgomery	OWENCLOUGHEY	D Leslie, 310 Longlands Road, Co Londonderry
£3,570	3397/A1	C A Coulter	CARRICK ROCK	S O'Kane, 61 Slane Road, Ballymena
£1,680	1463/A2	A & J Minnis	MOSSVALE	M J Hunter, 35 Loughview Road, Co Antrim
£5,040	4235/A1	E McKeegan	GLENANE	J Bell, Whelphill Farm, Crawford, Biggar
£2,310	4235/A2	E McKeegan	GLENANE	S Park, Dalpeddar, Sanquhar, Dumfriesshire
£1,260	3790/A2	T Wray	KNOCKSTACKEN	B Blaney, 9 Lower Cloughs, Ballymena
£1,785	2216/A20	McCormick Bros	BRABLAGH	S Hammond, 1 Tullylagan Road, Co Tyrone
				S A P Cowan, 26 Cascum Road, Co Down

Builth Wells – 20/09/08 - Aged Rams and Shearlings

£17,850	2832/Z3	G P Williams & Co	ELIAN	J McLeod, Nant Y Glyd, Llanddulas, Abergele
£1,837.50	2832/Z11	G P Williams & Co	ELIAN	T E & G A Hughes, Godre R Garreg, Caerfyrddin
£787.50	1183/Y19	D Jones (Champ)	PIGOT	E M Morgan, Bryn Haul, Welshpool, Powys

Ram Lambs

£1522.50	1070/A2	E Owen	CERNYW	R S Shaw, Locko Grange, Stanley, Derby
----------	---------	--------	--------	--

Ruthin – 26/09/08 - Shearling

£520 3649/Z1 J McLeod (**Champ**) WANSTEAD C Evans, Llanfihangle, Corwen

Hexham – 29/09/08 - Aged Rams and Shearlings

£1,250 281/Z13 R D Archer & Son CARRY HOUSE J A & J M Hodgson & Son, High Wingate, B Auck
 £1,800 1939/Z12 G Shapiro HAZELWOOD A Ryder, Newton Farm, Annan Water, Moffat

Ram Lambs

£1,500 281/A3 R D Archer & Son CARRY HOUSE O Scown, 60 West End, Wolsingham, Co Durham
 £3,200 584/A1 A G & D Bisset (**Champ**) MIDDLE DUKESFIELD N & E Sinclair, Shielsknowe, Roxburghshire
 £1,300 4171/A1 M Suddes TOWDYPOTTS A G & D Bisset, Middle Dukesfield, Hexham
 £1,200 3935/A10 S Thomason/C Hayton PIEL VIEW A McKellar, Sea View, 16 Keil Croft, Oban

Lanark – 01/10/08 - Aged Rams & Shearlings

£450 1567/Z4 J O & R Struthers GREENFIELD (**Champ**) J H Bridgeman, Shaw of Dryfe Farm, Lockerbie

Welshpool – 02/10/08 - Shearling

£682.50 3114/Z21 S A Harding (**Champ**) SHREWBURIDGE J E George & Son, Upper Penarron, Powys

Hawes – 02/10/08 - Aged Rams & Shearlings

£2,300 684/X8 G P Taylor SWATHBURN A C & K Pye. Duckinshaw, Lancs
 £1,100 684/Z11 G P Taylor SWATHBURN L Raine & Sons, Coach & Horses, Barnard Castle
 £4,600 963/W2 W A & A Booth SMEARSETT P Hallam, Tinwhistle, Cheshire
 £1,100 2224/Z4 Breck House Enter. BRECK HOUSE S Hallam, Grange Head Farm, Whitby, N Yorks
 £2,100 2187/Z8 J & D Stenton ST RAVENSCAR T A Collingwood, Ambling Gate, Co Durham
 £1,100 790/Y8 J C & E Pedley & Son YORE HOUSE S Hallam, Grange Head Farm, Whitby, N Yorks
 £1,300 790/Z21 J C & E Pedley & Son YORE HOUSE M/s Raine, Croft Farm, Kirkby Stephen
 £2,700 752/Z36 W C Porter & Son RIDDINGS A Fawcett & Sons, Old Hall, N Yorks
 £1,900 752/Z24 W C Porter & Son RIDDINGS W M & J E Shuttleworth, Fell House, Carnforth
 £1,050 752/Z30 W C Porter & Son RIDDINGS R Hird, Gillfield, Barnard Castle, Co Durham
 £1,100 2041/Z39 Ellis Bros ILKLEY MOOR M/s Hodgson, Rydal Farm, Ambleside, Cumbria
 £1,150 2041/Z4 Ellis Bros ILKLEY MOOR P Hallam, Tinwhistle, Cheshire
 £1,800 2041/Z16 Ellis Bros IKLEY MOOR R & E Cowperthwaite, Stockdale, Settle, N Yorks

Ram Lambs

£1,800 3253/A2 A Caton OTTERBURN LODGE A J Mason, Oddacre, Skipton, N Yorks
 £2,900 3253/A1 A Caton OTTERBURN LODGE W C Porter & Son, Riddings, Richmond, N Yorks
 £1,300 3253/A3 A Caton OTTERBURN LODGE R & R Gornall, Croft House, Sedburgh, Cumbria
 £1,100 3253/A8 A Caton OTTERBURN LODGE K M & L Throup, Woofa Farm, Keighley
 £3,700 2851/A1 R J D & F J Wilson LOW TIPALT M J & C Cockburn Ltd, South House, K Stephen
 Mr Barras, Oakbank, Kirkby Stephen, Cumbria
 G T & M A Wearmouth, Gillises Farm, K Stephen
 £1,050 3621/A1 K W & J Clarkson THROSTLE NEST D & H M Watson, Middleton Hall, Carnforth
 £1,000 3621/A7 K W & J Clarkson THROSTLE NEST H W & M A Alderson, Howgill Grange, B Castle
 £3,000 2070/A5 D J Abberley OLD HEMLEY J E & S J L James, Newadd-Blaenduhonw
 £1,000 2070/A3 D J Abberley OLD HEMLEY J Thomas & Son, Tan House, Powys
 £8,000 640/A2 W M Hutchinson KIRKBY REDGATE I & P Brown, Oak House, Kirkby Stephen
 M/s Lowis, Water Side House, Penrith
 £2,200 640/A3 W M Hutchinson KIRKBY REDGATE J Allison & Sons, Seal Houses, N Yorks
 £1,050 640/A7 W M Hutchinson KIRKBY REDGATE W A Dinsdale & Son, Harkerside, N Yorks
 £3,500 640/A12 W M Hutchinson KIRKBY REDGATE W M Hutchinson, Redgate, Cumbria
 G Fairburn, 66 Fountains Avenue, Harrogate
 £1,000 3320/A4 J Thomas & Son TANHOUSE FARM S J Buckley & Partners, Sittinglow Farm, Derbyshire
 £2,000 1185/A1 W J & L A Barker KEER M/s Folder, Wescoe Farm, Keswick, Cumbria
 £1,600 1185/A6 W J & L A Barker KEER N McQuistin, High Airyolland, Newton Stewart

£1,000 and over register

£1,050	1185/A11	W J & L A Barker	KEER	A J & G H Bland, Hollingworth Hall Farm, Cheshire
£3,000	3551/A1	R A Busby & Son	HARLAND	G P Taylor & Sons, Swarthburn, Appleby, Cumbria
£5,600	3551/A2	R A Busby & Son	HARLAND	A Lodge, Westside House, Settle, N Yorks
£1,900	3551/A4	R A Busby & Son	HARLAND	H Ridley & Son, Wood Hall, Wigton, Cumbria
£1,000	3551/A10	R A Busby & Son	HARLAND	J Dixon & Sons, Stainton Manor, Richmond
£1,100	3551/A3	R A Busby & Son	HARLAND	K & G Allison, Dale Forge, Kirkby Stephen
£1,000	3551/A15	R A Busby & Son	HARLAND	H Ridley & Son, Wood Hall, Wigton, Cumbria
£1,350	3551/A5	R A Busby & Son	HARLAND	J W Hall, Darnbrook, Settle, N Yorks
£1,000	2944/A1	E Nelson & Son	BULL & CAVE	P Addyman & Sons, Hagg Farm, N Yorks
£1,700	2944/A2	E Nelson & Son	BULL & CAVE	S Bell & Sons, Gill Gate, Leyburn, N Yorks
£4,600	2944/A3	E Nelson & Son	BULL & CAVE	J C & E Pedley & Son, Yore House, Cumbria
£1,000	2944/A5	E Nelson & Son	BULL & CAVE	J R & A Blades, Scarr House, Richmond, N Yorks
£1,000	2944//A7	E Nelson & Son	BULL & CAVE	Bank House Farms, Cowan Bridge, Carnforth
£1,000	2944/A8	E Nelson & Son	BULL & CAVE	B D & A Horner, Thwaite Head. Sedburgh, Cumbria
£1,200	2944/A9	E Nelson & Son	BULL & CAVE	W Morton & Son, Grennan, Penpont, Dumfries
£1,800	2263/A1	D & H M Watson	MIDDLETON HALL	G Rawsthorne, Scargill Farm, Carnforth, Lancs
£1,300	2263/A2	D & H M Watson	MIDDLETON HALL	K W & J Clarkson, Throstle Nest Farm, N Yorks
£1,600	2263/A3	D & H M Watson	MIDDLETON HALL	R & F H Martson, Highberries Farm Ltd, Cumbria
£1,600	2263/A4	D & H M Watson	MIDDLETON HALL	W & R Lawson, Stubbs Gill Farm, Cumbria
£1,100	2263/A6	D & H M Watson	MIDDLETON HALL	J R & L A Capstick, Beckside, Carnforth, Lancs
£1,300	2263/A7	D & H M Watson	MIDDLETON HALL	M Bateman & Sons, Moors Farm, Cumbria
£1,800	752/A1	W C Porter & Son	RIDDINGS	Breck House Enterprises Ltd, Barnsdale, Yorks
£1,000	752/A2	W C Porter & Son	RIDDINGS	J Ions & Co, Garrett Lee, Morpeth, Northumberland
£1,700	752/A3	W C Porter & Son	RIDDINGS	J Wight & Sons, Midlock, Biggar, Lanarkshire
£2,400	752/A4	W C Porter & Son	RIDDINGS	N McQuistin, High Airyolland, Newton Stewart
£1,200	752/A5	W C Porter & Son	RIDDINGS	E E Bullman, Vets Centre, Northallerton, N Yorks
£1,150	752/A16	W C Porter & Son	RIDDINGS	N McQuistin, High Airyolland, Newton Stewart
£1,200	752/A17	W C Porter & Son	RIDDINGS	G J & J M Scarr, Fawcetts Farm, Sedburgh, Cumbria
£1,300	752/A21	W C Porter & Son	RIDDINGS	Bank House Farms, Cowan Bridge, Carnforth
£1,200	752/A22	W C Porter & Son	RIDDINGS	K McGrath, Grouselodge, Co Donegal
£1,800	2726/A1	W & D Lawson	GRAGARETH	W & C W Dent, Greenriggs, Cumbria
£1,000	2726/A3	W & D Lawson	GRAGARETH	M/s Allan & Watson, Middleton Hall Cottage
£1,500	2726/A4	W & D Lawson	GRAGARETH	D & H M Watson, Middleton Hall Cottage
£1,100	1503/A2	W & C W Dent	GREENRIGGS	M P Capstick, High Lane, Kirkby Stephen
£1,000	1503/A6	W & C W Dent	GREENRIGGS	A Dixon & Son, Kitt Cragg, Kendal, Cumbria
£1,000	1503/A7	W & C W Dent	GREENRIGGS	R I Dixon, Lower Newton Farm, Cumbria
£11,500	292/A1	J J & E Lawson	HUNDITH	W A & A Booth, Old Hall Cottage, Lancs
£1,700	292/A3	J J & E Lawson	HUNDITH	A Lodge, Westside House, Settle, N Yorks
£1,200	292/A5	J J & E Lawson	HUNDITH	J E & E Dobson, White Kirkly Farm, Co Durham
£1,800	292/A7	J J & E Lawson	HUNDITH	C T & J E Willoughby, Wood End, Leyburn, N Yorks
£1,100	292A11	J J & E Lawson	HUNDITH	J R & A Blades, Scarr House, Richmond, N Yorks
£1,900	292/A13	J J & E Lawson	HUNDITH	R J & M J Bell, Scarrowmanwick, Carlisle
£1,800	292/A20	J J & E Lawson	HUNDITH	J W Porter & Sons, Low Oxnop, Richmond, N Yorks
£1,000	292/A19	J J & E Lawson	HUNDITH	F A Caton, Weston Hall Farm, Otley, Yorks
£4,200	746/A1	E Fairburn & Sons	MARRIFORTH	M/s Lord, Low Dowgill, Kirkby Stephen, Cumbria
£2,200	746/A2	E Fairburn & Sons	MARRIFORTH	J W & M E Taylor & Sons, High Laning, Cumbria
£1,000	746/A6	E Fairburn & Sons	MARRIFORTH	M/s Raine & Davidson, Thorney Gale, Cumbria
£1,100	746/A9	E Fairburn & Sons	MARRIFORTH	H R Hayton & Son, Asby Grange, Appleby, Cumbria
£1,000	746/A10	E Fairburn & Sons	MARRIFORTH	J Rayner & Sons, Cowthwaite Farm, N Yorks
£1,050	3777/A2	P & I Brown	OAK HOUSE	T H Vickers & Sons, Thornley Hall, Co Durham
£2,500	648/A12	G P Taylor & Sons	SWATHBURN	R S & B A Harker, Overthwaite, Holme, Lancs
£1,600	648/A14	G P Taylor & Sons	SWATHBURN	R A Busby & Son, Harland House, N Yorks
£1,500	648/A15	G P Taylor & Sons	SWATHBURN	R J & K Tiplady, Powis House, Cumbria

£1,300	3463/A1	K A Brown & Sons	ASBY HALL	J C White, Rigg Farm, Lunedale, Barnard Castle
£2,000	3463/A4	K A Brown & Sons	ASBY HALL	W H & D Gass, Nunsleugh, Carlisle, Cumbria
£3,000	3463/A10	K A Brown & Sons	ASBY HALL	H E Helme, Newcroft, Carnforth, Lancs
£11,000	980/A1	M/s Lord	HEWGILL	W M Hutchinson & Son, Redgate, Cumbria
				J Nelson & Son, Bull & Cave Farm, Lancs
£1,700	980/A2	M/s Lord	HEWGILL	M/s Lowis, Water Side House, Penrith
£1,000	980/A3	M/s Lord	HEWGILL	G & H R Shields, Tarn House, Kirkby Stephen
£1,200	980/A4	M/s Lord	HEWGILL	M/s Lowis, Water Side House, Penrith
£1,200	980/A5	M/s Lord	HEWGILL	M/s Raine, Outhwaite, Penrith, Cumbria
£1,000	980/A7	M/s Lord	HEWGILL	W M Raine & Sons, Old Parks, Penrith, Cumbria
£1,800	980/A10	M/s Lord	HEWGILL	K A Fawcett & Sons, Dale Head, Skipton, N Yorks
£1,100	980/A13	M/s Lord	HEWGILL	J & M J Walton, West Shotton, Co Durham
£1,600	3374/A1	R Hargreaves	BARLEY	G P Taylor & Sons, Swarthburn, Appleby, Cumbria
£1,500	3374/A3	R Hargreaves	BARLEY	R A Busby & Son, Harland House, N Yorks
£1,050	2041/A34	Ellis Bros	ILKLEY MOOR	F A & A Waugh, Kilnstown Farms Ltd, Carlisle
£2,000	2005/A1	A C Hutchinson	REDHILL (Champ)	R A Lund, Brynywellan, Llandrindodd Wells
£2,000	3096/A16	D A & M A Brown	AGGLETHORPE	K M & L Throup, Woofa Farm, Keighley
£1,000	3096/A19	D A & M A Brown	AGGLETHORPE	Breck House Enterprises Ltd, Barnsdale, Yorks
£1,000	2945/A1	K A Fawcett & Sons	DALEHEAD	J C & N Throup, Berwick Intake Farm, N Yorks
£1,000	2945/A8	K A Fawcett & Sons	DALEHEAD	J Pickles, Far Gearstones, Carnforth, Lancs
£10,000	1538/A11	J Wight & Sons	MIDLOCK	J Snaith, Clennell Hall, Morpeth, Northumberland
				R D Archer, Carry House, Wark, Hexham
				J Herdman, Edlingham, Alnwick, Northumberland
£1,500	1538/A12	J Wight & Sons	MIDLOCK	A & L Sedgley, Lindsey Fold Farm, Cumbria
£2,800	1538//A1	J Wight & Sons	MIDLOCK	E Fairburn & Sons, Marriforth, Ripon, N Yorks
£1,300	1538/A21	J Wight & Sons	MIDLOCK	E Fairburn & Sons, Marriforth, Ripon, N Yorks
£1,080	3350/A4	P Webster	MEREOAK	J W Smith-Jackson, High Town, Northumberland
£1,150	3350/A5	P Webster	MEREOAK	J & M Kerr, Craigskean, Maybole, Ayrshire
£1,000	2904/A1	C T & J E Willoughby	PENHILL	J W Porter & Sons, Low Oxnop, Richmond, N Yorks
£1,800	2968/A1	W A & A Booth	SMEARSETT	P Fell, Castle Hill, Pennington, Ulverston, Cumbria
£1,900	678/A1	A J Mason	ODDACRES	R & P E Hargreaves & Sons, Meadow Bank
£1,500	678/A2	A J Mason	ODDACRES	J & S E Bainbridge, Richmond, N Yorks
£1,200	678/A15	A J Mason	ODDACRES	M & G German, Sonermire Farm, Kirkby Lonsdale

Penrith – 09/10/08 - Rams Lambs

£700	399/A9	J Stott & Son (Champ)	LAUND	J C Pedley, Yore House, Sedburgh, Cumbria
£4,200	292/A2	M/s Lawson & Sons	HUNDITH	G E Carter & Son
£1,000	980/A17	M/s Lord	HEWGILL	

Carlisle – 10/10/08 - Aged Rams & Shearlings

£2,400	2951/Z4	Kilnstown Farm Ltd	KILNSTOWN	Ellis Bros, Cragg House Farm, Moorside, N Ilkley
£1,000	2951/Z23	Kilnstown Farm Ltd	KILNSTOWN	J F & A W Sutton, Nether House, Kendal, Cumbria
£2,000	483/Z5	R & M Scott	THIRLWALL	G W Lee & Sons, Stockley Barn Farm, Co Durham
£1,400	676/Z4	W I Foster	COOMBE CRAG	A & K M Barnes, Cowden, Blackburn, Lancs
£1,100	2577/Z9	W M & C Wallace	GAPSHIELD	J W Porter & Sons, Low Oxnop, Richmond, N Yorks
£1,100	2577/Z10	W M & C Wallace	GAPSHIELD	B W Hewitson, Shatton Lodge, Cumbria
£1,000	2577/Z11	W M & C Wallace	GAPSHIELD	J Capstick, Whicham Hall, Millom, Cumbria
£1,000	408/Z7	W H & D A Gass	NUNSCLEUGH	T A Collingwood & Sons, Ambling Gate Farm
£1,800	2747/Z7	J T & J James	TODHILLS	I Potts, Red Burn Farm, ,Weardale, Bishop Auckland

Ram Lambs

£1,500	2577/A1	W M & C Wallace	GAPSHIELD	H G & D Dixon, Alwinton Farm, Northumberland
£1,000	3570/A1	P Howell	LONGMYND	G J Meredith, Fron, Llandrindod, Wells, Powys
£1,400	3253/A19	A Caton	OTTERBURN LODGE	G & M A Lawn, None-Go-Bye, Skipton, Yorkshire
£1,200	2951/A23	Kilnstown Farm Ltd	KILNSTOWN	R Hargreaves, Meadow Bank, Burnley, Lancs

£1,000 and over register

£1,000	153/A2	W Watson	THORNHOPE	T P Wigham, Hargill House, Northumberland
£1,050	3114/A16	S A Harding	SHREWBURIDGE	T F & C Robinson, Bog Hall, Newcastle-On-Tyne
£2,600	3935/A3	S Thomason/C Hayton	PIELVIEW	M C Robinson & Son, West Cocklaw, Hexham
£1,800	65/A1	D W & D D Henderson	BURNDALE	G P & D Williams, Dolgraeon, Colwyn Bay
£1,600	65/A2	D W & D D Henderson	BURNDALE	D Jones, Ddol, Wells, Powys
£1,200	92/A2	M/s Little	CANNERHEUGH	G P & D Williams, Dolgraeon, Colwyn Bay
£1,900	1538/A6	J Wight & Sons	MIDLOCK	W H & F Raine, Ravenwood Cottage, Penrith
£1,000	752/A26	W C Porter & Son	RIDDINGS	T Trafford, Peter House Farm, Keswick, Cumbria
£1,000	980/A23	M/s Lord	Hewgill	T Wray, 72 Slane Road, Carnlough, Co Antrim
£1,400	2747/A2	J T & J James	TODHILLS	G & H R Shields, Tarn House, Kirkby Stephen
£1,150	2747/A5	J T & J James	TODHILLS	R I Brown, Butcher, Market Street, Cumbria
£1,100	2747A11	J T & J James	TODHILLS	M/s Lord, Low Dowgill, Kirkby Stephen, Cumbria
£1,250	2747/A6	J T & J James	TODHILLS	G W Lee & Sons, Stockley Barn Farm, Co Durham
£1,850	292/A6	M/s Lawson	HUNDITH	W A & A Booth, Old Hall, Feizor, Lancaster
£2,800	292/A8	M/s Lawson	HUNDITH	Knells Partners, Knells Farm, Houghton, Carlisle
£2,400	292/A17	M/s Lawson	HUNDITH	S W Mawson & Son, High Side, Keswick, Cumbria
£1,400	3933/A1	P Smith	THE DYKE	W C Porter, Riddings Farm, Richmond, N Yorkshire
£1,100	3933/A3	P Smith	THE DYKE	A C Hutchinson, Brick Yard, Kirkby Wisk, Thirsk
£1,000	281/A11	R D Archer	CARRY HOUSE	W P Sutcliffe, Cragg Hill, Settle, N Yorks
£1,400	281/A37	R D Archer	CARRY HOUSE	B W Hewitson, Shatton Lodge, Cumbria
£1,400	298/A1	E M Helme	ORMATHWAITE	R Hargreaves, Meadow Bank, Burnley, Lancs
£1,200	3320/A26	J Thomas & Son	TAN HOUSE	J R F Pattinson, Hott Bank, Northumberland
£2,400	640/A13	W M Hutchinson	KIRKBY REDGATE (Champ)	J Browell & Sons, Quarry House, Northumberland
£1,000	1574/A7	C & D Hall	FIRTH	S A Harding, Shrewbridge Court, Cheshire
£1,450	1080/A1	J W Smith Jackson	SHAFTHILL	A V Caton, Otterburn Lodge, Nr Skipton, Yorks
£1,300	1080/A7	J W Smith Jackson	SHAFTHILL	W H & D A Gass, Nunsleugh House, Carlisle
£1,000	1080/A5	J W Smith Jackson	SHAFTHILL	M T Abberley, Hemley Hall, Brecon
£1,000	408/A1	W H & D A Gass	NUNSCLEUGH	R W Emmott, Wythop Hall, Cockermouth
£750	893/W16	A M Little	THE CLOSE	M W & C M Ridley, Shitlington Hall, Hexham

Ballymena – 15/10/08 - Aged Rams & Shearlings

£1,575	1463/Z4	G Walsh	QUOILE	J Stewart, 16 Cochranestown Road, Co Antrim
£1575	4103/Z11	T Crowe	LEARMORE	J & W O'Kane, 30 Ballyvaddy Road, Ballymena
£399	4146/A5	A J C & K Montgomery	OWENCLOUGHEY (Champ)	C Lamont, Blackpark, Crocketford, Dumfries

Hereford – 15/10/08 - Shearling

£325	2906/Z33	T R Harris (Champ)	BONVILSTON	Mr Davies, Llanpicca
------	----------	--------------------	------------	----------------------

Association Trophy Winners 2008

Helme Trophy - Sire Of The Year Awarded to the vendor of 3 ram lambs by the same sire sold to the highest average through the Association Sales - M/s Lawson, Hundith for 3 lambs at Hawes at £11,500, £4,200, £2,800

Greenop Trophy - Awarded to the vendor of six lambs or more sold to the highest average through Association Sales - M/s Lawson, Hundith for six lambs at £11,500, £4,200, £2,800, £2,400, £1,900, £1,850

J R Bell & Son - Awarded to the highest priced lamb outside the top three prize winners at the sales at Hexham, Penrith and Carlisle - M/s Lawson, Hundith - £2,800

North West and Scottish Region Open Days



2008 Autumn Regional News

Northern Ireland

Chairman: Seamus O'Kane, 61 Slane Road, Carnlough, Ballymena, Co Antrim Tel: 028 28885911

Yet another summer has come and gone and as I write my report I'm thinking to myself "my god, the winter is here already" and it's a long time to May morning. But the weather is out of our control and we will just have to put up with it as normal.

The Blue Leicesters in Northern Ireland had a very good summer, coming up trumps with many of the summer shows showing off superb displays of the breed with big entries in all the classes. The highlight of the summer for me was the tit for tat dual between two absolutely fantastic ewes which without a doubt would stand toe to toe in any show/country. This statement is by no means taking away from all the other sheep on show. Seamus Laverty and William and Trevor Bell have to be commended for these two ewes and the standard they have set.

Our Progeny Show held in conjunction with Antrim Show was a great success again, far exceeding all expectations with outstanding quality and numbers of Leicesters on display in all classes never seen here before. Winning the pedigree section was Timothy Wray, Knockstacken and the Mule section was won by David Woodburn. It was a fine sight to see so many Leicesters and Mules out together on the one day.

Now to the backbone of our Blues, the Mule men, because without them demand for Leicesters would be slim. Once again the standard was exceptional through all the sales with most flock averages up on the year with the top end selling very easily proving more so than ever that the market is demanding quality. Let's make sure we keep them good and we will have no trouble with our Mule ewe staying at the top of the ladder.

Our pedigree sales got off to an absolute flyer with our premier sale in Ballymena mart seeing records smashed and the majority of the lots clearing, with some fantastic prices received for the top end of sheep. Top price and new centre record was achieved by a super lamb from Eamon Mckeegan, Glenane reaching 4800 gns. This proud strong lamb full of crossing lines was just too good to miss for Scotland breeders Jimmy Bell, Cottage and Stewart Park, Dalpeddar. Next top was a shearling ram from Robert Loughridge, Orravale at 4000 gns. This big brown ram stayed in Ireland selling to Alastair Christie, The Fields. Robert Loughridge had a fantastic day with a super pen of sheep with 20 shearlings selling to average 1100 gns. Colin Coulter, Carrick Rock also had a good day in the lamb section with his pen leader selling at 3400 gns to Michelle Wright, Mullaghwee. This lamb was also showing strong crossing lines and colour which was the trend the whole day with coloured ones proving in big demand with all buyers and the traditional kind finding it a little harder to hit the top mark. Champion of the day was a smart shearling from McCormick Bros, Brablagh and sold for 1700 gns.

Our second sale proved to be anything but exciting with very few customers and very few sheep changing hands although two lots were joint top price at 1500 gns, both shearlings, one from Tom Crowe, Learmore and one from Gerald Walsh, Quoile. This sale sent us all home wondering what the future holds. In my opinion this was one of those sales no-one can explain and let's hope we don't experience again. Champion of the day was a strong ram lamb from the Montgomery flock, Owencloghney at 380 gns.

I would like to thank all those who supported and attended the dinner dance from near and far which turned out to be a very sociable and enjoyable evening.

Now more than ever, we must as breeders keep our standards high and the quality good to ensure the Bluefaced Leicester has the ability to compete with other breeds in a very competitive market place.

Let's hope the winter is kind to us and the spring is early as we look forward to 2009.

North East

Chairman: Carl Stephenson, Pikestone, Bishop Auckland, Co Durham DL13 5RT Tel: 01833 631318

What an excellent summer we've had!! Following a wet and cold lambing time, we were all in need of some sunshine but sadly we experienced the wettest summer I can remember. Silage and hay-making, where possible, often did not happen until late September, with harvest taking place at the same time, both with low quality and quantities.

Along came the Autumn Sheep Sales and the successful Malvern Sheep Event, followed by the reality of the hopes for a good trade for breeding sheep, turning into a moderate one!

The first of the Bluefaced Leicester sales at Hexham saw the overall championship go to a ram lamb from Alec and Doreen Bisset, Middle Dukesfield, realising the top price of £3,200. The highlight of the day was the dispersal of the noted Hazelwood flock on behalf of Glenn Shapiro. Her well known show winning flock enjoyed a great sale, selling to all parts of the country and into Ireland. Top price was £2,300 for her ewe which was reserve overall champion.

Next we all headed to Hawes, which all roads led to, where the overall champion was a ram lamb from the well known show exhibitor Cecil Hutchinson, which sold for £2,000 late in the sale. Reserve champion was a ewe lamb from John and Claire Mason, Oddacres, going for £950. Top price for the day was £11,500 sold from J J & E Lawson's Hundith flock and closely behind was the £11,000 from M/s Lord's Hewgill flock.

I would like to congratulate all the vendors at these sales for presenting their sheep in tremendous condition and bloom, following such

a bad summer. Also thanks go to the purchasers for demonstrating their faith in the Bluefaced Leicester and their Mule progeny and I am sure these purchases will realise, and hopefully surpass, your expectations. The one highlight has been the higher price of prime lambs – may this continue through the winter and into next year.

On a personal note, this year has been quite momentous in that Julia and I took time out to make a very long awaited visit to Canada, enjoying the spectacle of Niagra Falls and sharing the splendours of The Rockies with my sister, husband and family, who live near Winnipeg. This literally broadened our horizons (I had never flown before) and whilst enjoying visits to farmers and neighbours of my sister's while we were out there and getting a taste of the Canadian's fabulous hospitality and sense of community, it made me appreciate that, in good times or bad, farmers enjoying common interests and aims, are there to support each other, and that here in the North-East we are particularly lucky.

Looking out over Teesdale this morning, I could see Bluefaced Leicester ewes (with evidence of running with the tup, thank goodness) through a half blizzard of October snow! This leads me in very neatly to wish you all a Merry Christmas and hope you and your family enjoy good health and prosperity in the New Year. I look forward to seeing you all over the coming months and to improved trading conditions.

North West

Chairman: John Townson, Brook House Farm, Whalley, Clitheroe, Lancs Tel: 01254 824672

I am sure that there has been a huge sigh of relief, all round that our summer events and most importantly the Association Sales have been able to take place on the allotted dates.

With the ever present threat of the dreaded 'Blue Tongue' and the worst weather for decades, it has been a nightmare for harvesting, agricultural events and preparing animals for sale.

I would like to think someone in the guided cage of Westminster appreciates the dedication and effort put in by our farmers to achieve the production of quality food for this country and abroad if necessary.

The Progeny Show held on the 26th July at Penrith Agricultural Show, was again very well supported, in particular with a good turn out for the Mule classes. This event is growing annually and is the flagship for our Association in the North. The quality of stock is a credit to the producers and certainly well received by the general farming public. Many thanks go to all stewards and helpers for excellent organisation, with a special thanks to Arthur Yeats, one of our trustees, who is always available with his help and advice.

The North West Open Day was held jointly by myself and family at Brookhouse Farm, Whalley and John Stott and family at Laund Farm, Chipping, where the majority of activities took place. The Stott family and friends are to be congratulated on arranging a whole catalogue of events, which included cheese making, a sheep milking demonstration and stockjudging competition, which consisted of ten pens of sheep, differing in breed and type. The fine fayre and drinks on offer, made this a very enjoyable day. North Sheep have scheduled their

2009 event to be held at Laund Farm, Chipping and I can strongly recommend a visit.

As far as sheep trade is concerned this Autumn, things have been mixed. The Mule shearing trade has been variable, the gimmer lamb trade I deemed satisfactory, sweetened a little by the wether lamb fat price. When did we last see Mule wethers sold in September, equaling prices achieved by traditionally bred fat lambs?

The Association sale, held at Penrith Auction Mart, on Tuesday 9th October, saw a steady but choice trade, with a top price of £4,200 for the reserve champion ram lamb from Hundith. The female champion from The Close sold for £520. The overall champion lamb was from the Laund flock.

The Carlisle sale, held on Friday 10th October saw entries depleted, due to movement restrictions in Scotland. A catalogue entry of 674 saw 509 presented for sale, with 323 animals sold. The overall champion ewe, from The Close, sold for £750. The reserve champion lamb from Kirkby Redgate sold for £2,400 and top price of the day was for a ram lamb from Hundith, realising £2,800.

Congratulations to all prizewinners and many thanks to the stewards, who made the job of Chief Steward a great deal less stressful.

On behalf of the many people involved, directly and indirectly, in the Association, I offer compliments of the season, and hope that we can manage a spell in the near future when we can give the waterproofs a well earned rest.



Would You Like A Website

If any member would like a website, the Association are offering you a chance to have your own mini website. This would be part of the Association website and have its own link through the breeders page.

If you would like any further information please contact: elaine@cassington.com

Regional News

Wales & South

Chairman: Dewi Jones, Plas Pigot, Llansannan, Denbigh,
Clwyd Tel: 01745 870246

This year has proved to be very difficult for all farmers in Wales due to the wet weather we've all experienced over the last few months, but the standard of sheep at the shows and sales in the region has been very high.

The season started with the Royal Welsh and we were treated to the only dry week of the summer. There was an excellent entry of sheep forward and the judge Alec Bisset, Middle Dukesfield presented the overall breed champion to M C & G Roberts, Myfyrian with the same ewe that has won this title for the third time running, quite an achievement. The reserve title went to the champion male a shearling ram exhibited by D P May, Derwenlas.

The champion and reserve were out again on Wednesday and they took the supreme pairs championship competing against a strong class of some 40 other breeds. Well done to both of you.

The Welsh Progeny Show saw a return to Welshpool this year, and judging the Bluefaced Leicesters was Glen Shapiro. Strong entries were forward in all the single classes and it was once again the ewe from M C & G Roberts that won the overall champion with Dewi Jones, Pigot taking the reserve ticket with a two year old ram.

In the BFL progeny section, Elfyn Owen, Cernyw clinched the title with a homebred ram Y1 shown with three ewe lambs.

The Mule section was judged by Kevin Parry who gave the champion to three outstanding ewe lambs shown by Michael James, Duhonw and out of a homebred sire X20. Our thanks go to all that made the day a success and also to our sponsors, Natural Stockcare Ltd who gave generously.

Our AGM and farm visit was held in September at Edgton Farm, Craven Arms where Helen Whittal runs her flock of Bluefaced Leicesters. The event was well attended and the standard of sheep was excellent, our thanks to our hosts for their kind and generous hospitality.

The autumn sale prices were a little more positive than last year but some lots were harder to move on. The new sale at Ruthin proved popular with local vendors with about 80 sheep entered and everyone going home pleased with the days trade.

The highlight of the sale season was without doubt the NSA Ram Sale at Builth when a shearling ram from Dewi Williams, Elian achieved the centre record price of 17,000 guineas selling to Jackie McLeod, Wanstead who put up with some fierce bidding to secure the ram.

I would like to take this opportunity to thank all the members for their continued help and support and wish you all the best for 2009.

Scotland

Chairman: Jimmy Bell, Whelphill Farm, Crawford,
Biggar Tel: 01864 502283

Well here is my first report as Scottish Chairman. I have just got back from the Irish Dinner Dance which was held at the Adair Arms where I was joined by my wife Wendy, Stewart Park & Eunice Mills. We all had a very good weekend with the help of the great hospitality shown by our friends in the Irish region. I won't mention the weather as we've all had it bad.

My year started with the Scot sheep where the stand was busy and thanks goes to the people who supplied sheep for the event. Then it was on to the Highland Show where we joined forces with the Scotch Mule Association for the stand in the NSA tent which was a great success. The show was judged by Mr Robert Neill of the Rossiebank flock, and congratulations must go to David and Jane Cruikshank who was placed champion with a shearling tup by the £3,200 Clennell tup. Reserve was a gimmer from Drew Brown, Drumhumphry flock. In the Scotch Mule classes John Kerr of Craigskean, another Scottish Blue breeder came out tops with a Mule ewe.

The next event on the calendar was the open day at Dreva & Parkgatestone where a large crowd viewed some top quality Leicesters and Mule ewe lambs. Many thanks goes to the Warnock and Cunningham families for all their hard work and hospitality.

The Scottish sales started with Kelso which we were all happy to see go ahead this year after a year of absence with a top price of £6,600 from the Clennall flock. The shearling average was £629 for 435 sheep sold, and the ram lambs were topped at £2,100 from the Firth flock. The lamb average was £573 for 18. A week later it was Castle Douglas, with a sale top of £6,000 for a lamb from John Kerr, Craigskean flock. The shearlings top was £3,300 from the Macqueston flock. The 205 shearlings averaged £415.35 and 116 ram lambs averaged £628.12. Lanark sale saw a slight rise in the shearling average and 80% clearance with the shearlings average at £222.80 and lambs at £176 up £60 on the on the year. Ewe's averaged £350 with gimmers at £130.

I'll close by saying if you've purchased a Blue I hope they all do. So bye for now see you all next year.

Visit your Association's website

www.blueleicester.co.uk

For

Show/Sale Reports,

Sale Catalogues

Association/Regional News

& much, much more ...

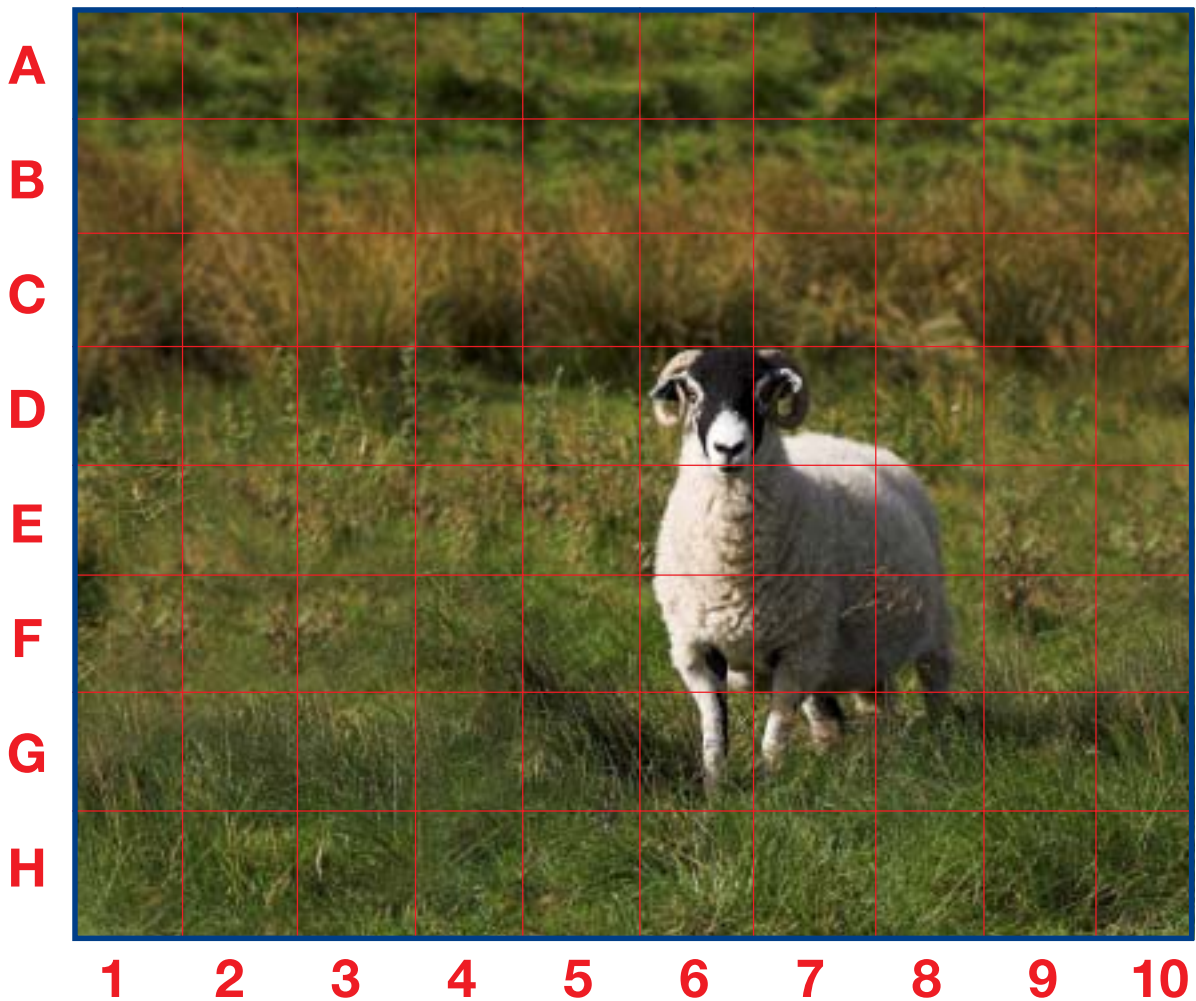


Spot The Lamb Competition

Natural Stockcare are kindly donating £150 of their products to the lucky winner. Further details of the prize can be found on the website. For all your Natural Stockcare supplies, please contact Tom Stevenson on 07713 259160.

All you have to do is to guess where the Mule lamb is in the picture below, for example B4.

You can enter the competition on the website, or in writing by post, fax or email to the Association office. Competition will be drawn Monday 19th January 2009 at Carlisle in-lamb sale.



Cocklaw

Bluefaced Leicesters



Cocklaw Sparky

Stock & Semen Available

From Traditional Sires

Visitors Always Welcome -
Matt, Nicky & Kath Robinson
Tel: 01434 681362/0777 1597792
Email: westcocklaw@btconnect.com

Cassington



Cassington Z1

Ram lambs by the above sire and
Thornton-le-Dale X1 averaged £825 at
Castle Douglas this year.

Quality Females For Sale.

Further details on our website:
www.cassington.com

Enquiries & Visitors Welcome M & C Drummond - 01292 560288

Highberries 3425 Crossing Leicesters



Hundith Z4

This year, eight out of ten of our Mule show team were sired by Z4 including our Mule lamb (pictured below) which was champion in the open classes at Penrith Progeny Show. This is the third year we have won this title.

Our plan is to use this tup extensively on our Swales and Bluefaced Leicesters including daughters of Snab Green X1 who sired our 2008 Penrith Progeny Show Champion group of three Mules lambs.



Contact Details: Neil Marston - 07974 919505
Millstone Moor, Redmain, Cockermouth,
Cumbria CA13 0QA