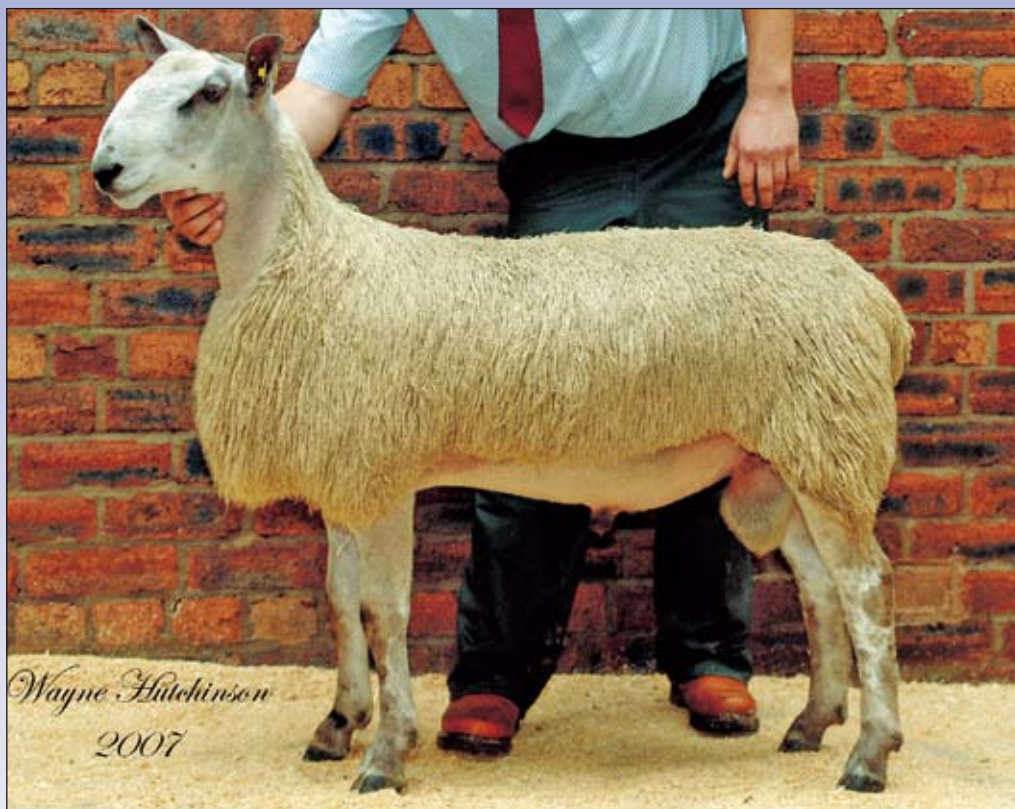




BLUEFACED LEICESTER SHEEP BREEDERS' ASSOCIATION

CASTLE DOUGLAS SALE

Friday 19th September 2008
at Wallets Mart, Castle Douglas



3331/2001 CASTLE DOUGLAS CHAMPION 2007

Bred and Exhibited by J Bell, COTTAGE

Purchased by J Fisher, FLATHILLS for £900

*"The Future's Bright,
the Future's Blue"*



**BLUEFACED LEICESTER SHEEP
BREEDERS' ASSOCIATION**



**TWENTIETH ANNUAL
SHOW AND SALE**

**439 Registered Bluefaced Leicesters
244 Aged & Shearling Rams and 195 Ram Lambs**



Friday 19th September 2008



in

Wallets' Marts, Castle Douglas

Judging 8.30 a.m.

Sale commences 10.00 a.m.

SHEEP WILL BE SOLD AS CATALOGUED

AWARDS

Shearling Ram; 1st £5, 2nd £3, 3rd £2.

Ram Lambs; 1st £5, 2nd £3, 3rd £2.

**Perpetual Trophy presented by Tarff Valley Ltd., to be awarded
to the OVERALL CHAMPION**

JUDGE:

A. Bisset, Middle Dukesfield.

CHIEF STEWARD:

N. Laing.

STEWARDS:

J. Porter, J. Herdman, C. Lamont, D. Brown.

ONLY CATALOGUED SHEEP WILL BE ALLOWED IN THE SALE

ALL SHEEP MUST BE CLEARLY NUMBERED WITH THEIR CATALOGUE LOT NUMBER

SECRETARY: Jean Gibbon, Furmiston, Carsphairn, Castle Douglas. DG7 3TE.

Tel: 01644 460647

KINDLY SPONSORED BY MacMIN

Printed by Solway Offset the Printers, 11 Catherinefield Ind. Estate, Heathhall, Dumfries.

EXHIBITOR	FLOCK No.	PREFIX
P. B. Adams, Clugston Farm, Kirkcowan, NEWTON STEWART, Wigtownshire.	1724	CLUGSTON
Mr. T. R. Anderson, Guelt Farm, CUMNOCK, Ayrshire. KA18 3JA.	2120	GUELT
Messrs R. D. Archer & Son, Carry House, Wark, HEXHAM, Northumberland. NE48 3HG.	281	CARRY HOUSE
Mrs. A. Bastian, Cairnhall, Auldirth, DUMFRIES, Dumfriesshire. DG2 0UB.	2565	ROWANDALE
Mr. J. Bell, Hamilton Hall West, Newlands, WEST LINTON, Peebles. EH46 7DB.	3331	COTTAGE
R. C. Bell, Upper-Dullarg, Balmaclellan, CASTLE DOUGLAS, Kirkcudbrightshire.	1124	KNOCKAIRDIE
R. H. & Co. Bell, Roxburgh Mill, KELSO, Roxburghshire.	1521	TEVIOT
S. Black & Son, Hillside, Knockvennie, CASTLE DOUGLAS, Kirkcudbrightshire.	273	HILLSIDE
Mrs. M. Bodle, 2 High Boreland, Glenluce, NEWTON STEWART, Dumfriesshire. DG8 0NW.	3828	SAMM
A. M. Brown, Drumhumphry, Corsock, CASTLE DOUGLAS, Kirkcudbrightshire.	859	DRUMHUMPHRY
A. Brown, Macqueston, Tynron, Thornhill, DUMFRIES, Dumfriesshire.	2571	MACQUESTON
D. Brown & Co., Mosshead Farm, Tundergarth, LOCKERBIE, Dumfriesshire.	3842	TUNDERGARTH
Miss H. Brown, Toxside, Temple, GOREBRIDGE, Midlothian. EH23 4SZ.	3199	LEADBURNLEA
Mr. M. C. Brown, Abune The Brae, Lochfoot, DUMFRIES, Dumfriesshire. DG2 8PA.	2153	CAIRNSMORE
Messrs James Common & Son, Crossdykes Farm, LOCKERBIE, Dumfriesshire. DG11 2QL.	3765	CROSSDYKES
T. & M. Cannon, Little Torhouse, WIGTOWN, Wigtownshire.	2307	TORHOUSE
Mr. S. J. Crozier, Raggetsyke, Waterbeck, LOCKERBIE, Dumfriesshire. DG11 3ET.	2399	WATERSYKE
D. Cruikshank, Drumrash Farm, Parton, CASTLE DOUGLAS, Kirkcudbrightshire.	2800	NITHSDALE
Mr. D. Cruikshank, Broomisle Cottage, Munches Estate, By Palnackie, CASTLE DOUGLAS, Kirkcudbrightshire. DG7 1PD.	4180	C.D.
D. L. & S. Currie, Pinclanty, Pinore, GIRVAN, Ayrshire.	2280	BRAEGARRIE
Mr. C. Driver, Howslack Farm, Kilbucho, BIGGAR, Lanarkshire. ML12 6JG.	2267	ROSEGROVE
M. & C. Drummond, Cassington Farm, MAYBOLE, Ayrshire.	1257	CASSINGTON
J. Fisher, Flathill Farm, Dundrennan, Kirkcudbright.	3894	PADDOCKHALL
F. Gilligan, High Creoch, GATEHOUSE OF FLEET, Kirkcudbrightshire.	2384	HIGH CREOCH
E. Gillon, Craigs Farm, DAILLY, Girvan.	2760	CRAIG
H. & S. Hamilton, Tower Farm, SANQUHAR, Dumfriesshire.	2637	CAIRN SMIDDY
A. Hamilton, Marr Farm, THORNHILL, Dumfriesshire.	3685	MARR
Mr. J. Harkness, Nether Hall, Kirkmahoe, DUMFRIES, Dumfriesshire. DG1 1RE.	3266	LANRICK HALL
R. W. Jardine, Upper Hardland, BALMACLELLAN.	2869	HARDLAND
A. & L. Kerr, 23 Hayhill, AYR, Ayrshire. KA8 0SQ.	4203	HAYHILL
J. & M. Kerr, Craigskean, MAYBOLE, Ayrshire.	2329	CRAIGSKEAN
Messrs W. Lockhart & Son, Laggan Park, Moniaive, THORNHILL, Dumfriesshire. DG3 4DZ.	3768	LAGGAN PARK
McConchie Partnership, Mossyard, GATEHOUSE-OF-FLEET, Kirkcudbrightshire.	1240	MOSSYARD
R. McKie, Finness Farm, Balmaghie, CASTLE DOUGLAS, Kirkcudbrightshire.	2554	FINNINESS
McKill Maxwell & Co., Boatrig, Auldirth, DUMFRIES, Dumfriesshire.	1902	COSHOGLE
Mr. A. S. McQuistin, Barnshangan, New Luce, NEWTON STEWART, Wigtownshire. DG8 0NA.	2884	BARSHANGAN
R. McTurk, Glenhowl, Kendoon, Dalry, CASTLE DOUGLAS, Kirkcudbrightshire.	2217	BARLAES
Mrs. R. Maxwell, Boatrig, Auldirth, DUMFRIES, Dumfriesshire. DG2 0XP.	3830	COSHOGLE/BOATRIG
R. & J. Milroy, Cairnwhin, Pinmore, GIRVAN.	3862	CAIRNWHIN
Mr. S. Mitchell, Mains of Larg, New Luce, NEWTON STEWART, Wigtownshire. DG8 0AT.	3725	MAINS OF LARG
Mr. A. Morton, Grennan, Penpont, THORNHILL, Dumfriesshire. DG3 4LX.	3857	GRENNAN
W. Murray, High Ersock, Whithorn, Newton Stewart, Wigtownshire.	3762	NINIAN
S. Park & E. Mills, Auchens Farm, Mennock, SANQUHAR, Dumfriesshire.	2690	S.P.DALPEDDAR
Mr. R. Neill, Broadleys, DUNNING, Perthshire. PH2 0QX.	840	ROSSIEBANK
J. Park, Dalpeddar, SANQUAR, Dumfriesshire.	3749	FOREBRAE
Miss E. J. Parker, Old Hall Farm, NEWTON STEWART, Wigtownshire. DG8 6HU.	4270	OLD HALL FARM
L. W. & M. J. Parker, Old Hall, NEWTON STEWART, Wigtownshire.	912	HALL MAINS
J. Pringle, Stroanpatrick, Dalry, CASTLE DOUGLAS, Kirkcudbrightshire.	2933	STROANPATRICK
Mrs. K. Smith, Low Arkland Farm, Rhonehouse, CASTLE DOUGLAS, Kirkcudbrightshire.	1553	LOW ARKLAND
H. Stenton, Easthill Farm, Wilton Road, Thornton Dale, PICKERING, N. Yorks.	3900	THORNTON LE DALE
. Stewart, Kilpatrick, Pinmore, GIRVAN, Ayrshire.	1440	HALLOWCHAPEL
Mr. J. Taylor, Lochhill Farm, MAUCHLINE, Ayrshire. KA5 5S.	1420	LOCHHILL
J. Thomson, 1 Southmains Cottage, SANQUHAR.	4046	J & D BLUES
R. Watson, High Borgue, BORGUE, Kirkcudbrightshire.	3602	HIGH BORGUE
Messrs J. Wight & Son, Midlock Farm, Camps Road, BIGGAR, Lanarkshire. ML12 6UA.	1538	MIDLOCK
W. & J. Young, South Quintinespie, Laurieson, CASTLE DOUGLAS, Kirkcudbrightshire.	2116	ESPIE

CONDITIONS OF SALE:

1. ALL SHEEP MUST BE PENNED BY 9.00 a.m. OTHERWISE THEY WILL NOT BE SOLD.
2. The Sale will be conducted under the auspices of the Bluefaced Leicester Sheep Breeders Association.
3. The Exhibitor is the Breeder unless otherwise stated. Animals marked * are Two-shear or over. Flock Prefix in Capitals.
4. All sheep classified by the Association as 'Elite', 'Approved' or 'Elite Plus' and their progeny, are marked 'E', 'A' or 'E' plus accordingly.
5. All sheep must be sold in the order in which they are catalogued with the exception of the Champion sheep, which can come anywhere in the exhibitor's run of sheep.
6. An Upset price of £100 will stand on all Sheep.
7. **Whilst every care is taken in compiling this catalogue the Association does not accept responsibility for any errors which may occur.**
8. Black wool must be declared by the vendor at the time of the sale. If not declared and found by the purchaser before it leaves the market, the sheep can be returned on that day.
9. Purchasers must satisfy themselves as to the correctness of any animal for which they bid, which will be their responsibility at the fall of the hammer.
10. Red Spots marked on sheep by the inspector indicate that:
 - (a) a ram of any age is marginally incorrect in the testicles and the fault will be intimated to the auctioneer by the Exhibitor and announced at the time of sale and the ram warranted a stock getter by the Exhibitor
 - (b) an adult sheep is considered to be of good conformation but marginal in the mouth and the fault will be intimated to the auctioneer by the Exhibitor and announced at time of sale.
11. Any complaint for cudspilling must be lodged with the auctioneers before the sheep is removed from the sale premises. The return of a sheep for cudspilling shall be a matter to be resolved between the vendor and the purchaser.
12. All disputes are a matter to be resolved between the vendor and purchaser. The Association does not guarantee the stock getting capabilities of any sheep.

THE CERTIFICATION OF THE SHEEP IDENTIFICATION AND THE NSP BOLUS IS THE SOLE RESPONSIBILITY OF THE VENDOR. THE ASSOCIATION WILL PROVIDE A SCANNER FOR USE BY VENDORS OR PURCHASERS TO VERIFY BOLUS NUMBERS ON THE DAY OF THE SALE.

VENDORS CONDITIONS OF WARRANTY:

- (i) If a ram is proved incapable of and ineffective at natural service, and is to be returned by the purchaser to the vendor, notice must be given as soon as possible by the purchaser to the vendor and the ram must be returned to the vendor no later than **5th December** in reasonable condition.
 - (ii) No claim on the vendor to exceed the purchase price of the ram.
 - (iii) **Any female should be guaranteed free of lamb at time of sale unless otherwise stated. Any animal to be returned should be returned by 5th January in reasonable condition.**
 - (iv) **No claim on the vendor to exceed the purchase price of the animal.**
- Any member selling a ram from which semen has already been stored must advise the auctioneers and have it announced at time of sale.

ALL SHEEP ARE THE PRODUCE OF REGISTERED FLOCKS AND CONSIGNED BY MEMBERS OF THE BLUEFACED LEICESTER SHEEP BREEDERS' ASSOCIATION.

Reference Sires used in the Sire Reference Scheme are marked "RS".

**RAMS OF NSP GENOTYPE ARE MARKED WITH COLOURED DISCS
TYPE 1 – RED, TYPE 2 – BLUE, TYPE 3 – GREEN.**

AGED & SHEARLING RAMS

Pen No.	Lot No.	Exhibitor	Reg. No.	NSP Genotype	
302	1	Robert McKir, FINNINESS.	2554/Z4	ARR/ARR	Sire: 2571/V1 Macqueston Sire of Dam: 123/N4 Old Church
	2-3		2554/Z1 to 2554/Z2	ARR/ARQ	Sire: 2554/W6 Finniness Sire of Dam: 584/M5 Middle Dukesfield
	4		2554/Z3	ARR/ARR	Sire: 2554/W6 Finniness Sire of Dam: 2571/V1 Macqueston

<i>Pen No.</i>	<i>Lot No.</i>	<i>Exhibitor</i>	<i>Reg. No.</i>	<i>NSP Genotype</i>	<i>Sire</i>	<i>Sire of Dam</i>
	5		2554/Z6	ARR/ARR	2571/V1 Macqueston	123/N4 Old Church
	6		2554/Z10	ARR/ARR	2571/Y7 Macqueston	2571/V2 Macqueston
	7		2554/Z8	ARR/ARR	2571/Y7 Macqueston	2571/V2 Macqueston
	8		2554/Z16	ARR/ARR	2690/W2 S.P. Dalpeddar	3211/W3 Low Creoch
	9	(Bred by Messrs T. D. & T. Veitch, LOW CREOCH)	3211/Z17		2571/Y7 Macqueston	
303-304	10	Andrew M. Brown, DRUMHUMPHRY.	859/Z8	ARR/ARR	1521/Y3 Teviot	1463/V5 Mossvale
	11		859/Z10	ARR/ARQ	1521/Y3 Teviot	1463/V5 Mossvale
	12		859/Z7	ARR/ARR	1521/Y3 Teviot	1463/V1 Mossvale
	13		859/Z14	ARR/ARR	2969/X1 Hinton	1463/V1 Mossvale
	14		859/Z17	ARR/ARR	2969/X1 Hinton	1463/V5 Mossvale
	15		859/Z15	ARR/ARR	2969/X1 Hinton	1463/V1 Mossvale
	16		859/Z1	ARR/ARQ	1463/V1 Mossvale	1510/R3 Red Cottage
	17		859/Z5	ARR/ARR	1463/V1 Mossvale	1463/T3 Mossvale
	18		859/Z2	ARR/ARR	1463/V1 Mossvale	1510/R3 Red Cottage
	19		859/Z12	ARR/ARR	1521/Y3 Teviot	1463/V5 Mossvale
	20		859/Z9	ARR/ARR	1521/Y3 Teviot	1463/V1 Mossvale
	21		859/Z11	ARR/ARR	1521/Y3 Teviot	1463/V5 Mossvale
	22		859/Z13	ARR/ARR	1521/Y3 Teviot	1463/V5 Mossvale
	23		859/Z4	ARR/ARR	1463/V1 Mossvale	1510/R3 Red Cottage
	24		859/Z3	ARR/AHQ	1463/V1 Mossvale	1510/R3 Red Cottage
305	25-26	Rosemary Maxwell, COSHOGLE/BOATRIG.	3830/Z2 to 3830/Z3	ARR/ARR	1080/Y4 Shafthill	752/W7 Riddings
	27-28		3830/Z4 to 3820/Z5	ARR/ARQ	1080/Y4 Shafthill	752/W7 Riddings
306	29	McKill Maxwell & Co., COSHOGLE.	1902/Z2	ARR/ARR	1080/Y4 Shafthill	1080/S25 Shafthill
	30		1902/Z3	ARR/ARR	1080/Y4 Shafthill	1510/X2 Red Cottage
	31		1902/Z13	ARR/ARR	1080/Y4 Shafthill	752/W7 Riddings
	32		1902/Z16	ARR/ARR	1080/Y4 Shafthill	752/W7 Riddings
307	33	Samuel Black & Son, HILLSIDE.	273/Z1		1521/Y4 Teviot	
	34		273/Z5		1521/Y4 Teviot	
	35		273/Z11		1521/Y4 Teviot	
	36		273/Z13		1521/Y4 Teviot	
	37		273/Z8		1521/Y4 Teviot	
	38		273/Z12		1521/Y4 Teviot	
	39		273/Z2		1521/Y4 Teviot	

<i>Pen No.</i>	<i>Lot No.</i>	<i>Exhibitor</i>	<i>Reg. No.</i>	<i>NSP Genotype</i>	<i>Sire</i>	<i>Dam</i>
	40		273/Z15		1521/Y4 Teviot	
	41		273/Z6		1521/Y4 Teviot	
	42		273/Z14		1521/Y4 Teviot	
308	43	W. & J. Young, ESPIE.	2116/Z5	ARR/ARR	2571/X3 Macqueson	50/R1 Low Fells
	44		2116/Z4	ARR/ARQ	2571/X3 Macqueson	152/W4 Teviot
	45		2116/Z9	ARR/ARQ	2571/X3 Macqueson	2558/T2 Brieryside
	46		2116/Z7	ARR/ARR	2571/X3 Macqueson	2800/P3 Nithsdale
	47		2116/Z6	ARR/ARR	2571/X3 Macqueson	152/W4 Teviot
	48		2116/Z10	ARR/ARQ	2571/X3 Macqueson	152/W4 Teviot
	49		2116/Z11	ARR/ARR	2571/X3 Macqueson	255/T2 Brieryside
	50		2116/Z12	ARR/ARR	2571/X3 Macqueson	2800/P3 Nithsdale
	51		2116/Z14	ARR/ARQ	2571/X3 Macqueson	2558/T2 Brieryside
	52		2116/Z3	ARR/ARR	2571/X3 Macqueson	2558/T2 Brieryside
	53	2116/Z13	ARR/ARR	ARR/ARR	2571/X3 Macqueston	2558/T2 Brieryside
309	54	M. C. Drummond, CASSINGTON.	1257/Z3	ARR/ARR	7/W4 Broomhills	1124/R1 Knockairdie
	55		1257/Z10	ARR/ARR	1521/W1 Teviot 'E' Plus	1124/R1 Knockairdie
	56		1257/Z2	ARR/ARR	7/W4 Broomhills	1124/R1 Knoackirdie
	57		1257/Z17	ARR/ARR	1939/X7 Hazelwood 'E' Plus	1124/T2 Knockairdie
	58		1257/Z9	ARR/ARR	1521/W1 Teviot 'E' Plus	7/W4 Broomhills
	59		1257/Z21	ARR/ARR	1939/X7 Hazelwood 'E' Plus	7/W4 Broomhills
	60		1257/Z29	ARR/ARR	1939/X7 Hazelwood 'E' Plus	1124/R1 Knockairdie
	61		1257/Z18	ARR/ARR	1939/X7 Hazelwood 'E' Plus	1124/R1 Knockairdie
	62		1257/Z26	ARR/ARR	1939/X7 Hazelwood 'E' Plus	1124/R1 Knockairdie
310	63	R. C. Bell, KNOCKAIRDIE.	1124/Z4	ARR/ARR	676/W6 Coombe Crag	1574/V18 Firth
	64		1124/Z5	ARR/ARQ	676/W6 Coombe Crag	1574/V18 Firth
	65		1124/Z2	ARR/AHQ	2571/X2 Macqueston	1574/V18 Firth
	66		1124/Z6	ARR/ARQ	676/W6 Coombe Crag	1574/V18 Firth
	67		1124/Z1	ARR/AHQ	2571/X2 Macqueston	980/K9 Hewgill
	68		1124/Z3	ARR/ARR	2571/X2 Macqueston	1574/V18 Firth
	69		1124/Z7	ARR/ARQ	676/W6 Coombe Crag	1574/V18 Firth
	70		1124/Z9	ARR/ARR	2571/X2 Macqueston	930/K9 Hewgill
	71		1124/Z10	ARR/ARR	1257/W2 Cassington	217/S1 Barlaes
311	72	R. W. Jardine, HARDLAND.	2869/Z1	ARR/ARR	2571/Y1 Macqueston	2690/W5 S.P. Dalpeddar

<i>Pen No.</i>	<i>Lot No.</i>	<i>Exhibitor</i>	<i>Reg. No.</i>	<i>NSP Genotype</i>	<i>NSP</i>
	73		2869/Z6	ARR/ARR	<i>Sire:</i> 2571/Y1 Macqueston <i>Sire of Dam:</i> 2571/T14 Macqueston
	74		2869/Z4	ARR/ARR	<i>Sire:</i> 2571/Y1 Macqueston <i>Sire of Dam:</i> 2690/W5 S.P. Dalpeddar
	75		2869/Z2	ARR/AHQ	<i>Sire:</i> 2571/Y1 Macqueston <i>Sire of Dam:</i> 2690/W5 S.P. Dalpeddar
	76		2869/Z5	ARR/ARR	<i>Sire:</i> 2571/Y1 Macqueston <i>Sire of Dam:</i> 2571/T14 Macqueston
312	77	Fiona Gilligan, HIGH CREOCH.	2384/Z1	ARQ/AHQ	<i>Sire:</i> 2565/X4 Rowandale <i>Sire of Dam:</i> 366/R4 Blackpark
	78		2384/Z5	ARR/ARR	<i>Sire:</i> 2571/V1 Macqueston <i>Sire of Dam:</i> 366/R4 Blackpark
	79		2384/Z6	ARR/ARR	<i>Sire:</i> 2554/W6 Finniness <i>Sire of Dam:</i> 366/R4 Blackpark
	80		2384/Z7	ARR/AHQ	<i>Sire:</i> 2554/W6 Finniness <i>Sire of Dam:</i> 366/R4 Blackpark
	81		2384/Z4	ARR/ARQ	<i>Sire:</i> 2565/X4 Rowandale <i>Sire of Dam:</i> 2571/V1 Macqueston
313	82-83	William Murray, ERSOCK.	3762/Z1 to 3762/Z2	ARR/ARR	<i>Sire:</i> 1000/W1 Ewanston <i>Sire of Dam:</i> 2329/P14 Craigskean
	84		3762/Z3	ARR/ARR	<i>Sire:</i> 1000/W1 Ewanston <i>Sire of Dam:</i> 912/S8 Hallmains
	85		3762/Z4	ARR/ARR	<i>Sire:</i> 1000/W1 Ewanston <i>Sire of Dam:</i> 1097/V27 Kensington
	86		3762/Z5	ARR/ARQ	<i>Sire:</i> 1000/W1 Ewanston <i>Sire of Dam:</i> 1097/V27 Kensington
	87		3762/Z7	ARR/AHQ	<i>Sire:</i> 1000/W1 Ewanston <i>Sire of Dam:</i> 233/R11 Parton
314	88	J. & M. Kerr, CRAIGSKEAN.	2329/Z6	ARR/ARQ	<i>Sire:</i> 2329/Y26 Craigskean <i>Sire of Dam:</i> 1458/V1 Tygwyn
	89		2329/Z1	ARR/ARR	<i>Sire:</i> 752/Y29 Riddings <i>Sire of Dam:</i> 1080/S3 Shafthill
	90		2329/Z9	ARR/ARQ	<i>Sire:</i> 3331/W3 Cottage <i>Sire of Dam:</i> 1538/V38 Midlock
	91		2329/Z8	ARR/ARR	<i>Sire:</i> 1080/J1 Shafthill <i>Sire of Dam:</i> 1458/V1 Tygwyn
	92		2329/Z17	ARR/ARR	<i>Sire:</i> 2555/Y7 Ashcleugh <i>Sire of Dam:</i> 1621/T2 Dreva
	93-94		2329/Z14 to 2329/Z15	ARR/ARR	<i>Sire:</i> 3331/W3 Cottage <i>Sire of Dam:</i> 1458/V1 Tygwyn
	95		2329/Z10	ARR/ARR	<i>Sire:</i> 3331/W3 Cottage <i>Sire of Dam:</i> 1080/M5 Shafthill
	96		2329/Z11	ARR/AHQ	<i>Sire:</i> 3331/W3 Cottage <i>Sire of Dam:</i> 1080/S3 Shafthill
	97		2329/Z2	ARR/ARR	<i>Sire:</i> 752/Y29 Riddings <i>Sire of Dam:</i> 980/W40 Hewgill
	98		2329/Z12	ARR/AHQ	<i>Sire:</i> 3331/W3 Cottage <i>Sire of Dam:</i> 1458/V1 Tygwyn
315	99	Mr. John Park, FOREBRAE.	3749/Z29		<i>Sire:</i> 1080/Y1 Shafthill <i>Sire of Dam:</i> 2224/T1 Breckhouse
	100		3749/Z17		<i>Sire:</i> 4046/Y1 JD Blues <i>Sire of Dam:</i> 2571/W8 Macqueston
	101		3749/Z14		<i>Sire:</i> 1080/Y1 Shafthill <i>Sire of Dam:</i> 2224/T1 Breckhouse
	102		3749/Z7		<i>Sire:</i> 1080/X18 Shafthill <i>Sire of Dam:</i> 2690/S1 S.P. Dalpeddar
	103		3749/Z2		<i>Sire:</i> 1080/X18 Shafthill <i>Sire of Dam:</i> 2571/W8 Macqueston
	104		3749/Z11		<i>Sire:</i> 2224/T1 Breckhouse <i>Sire of Dam:</i>
	105		3749/Z28		<i>Sire of Dam:</i> 1538/P13 Midlock <i>Sire:</i> 1080/Y1 Shafthill
316	106	McConchie Partnership, MOSSYARD.	1240/Z1	ARR/ARR	<i>Sire of Dam:</i> 1538/P13 Midlock <i>Sire:</i> 273/W1 <i>Sire of Dam:</i> 2558/T1

<i>Pen No.</i>	<i>Lot No.</i>	<i>Exhibitor</i>	<i>Reg. No.</i>	<i>NSP Genotype</i>	<i>Sire</i>	<i>Dam</i>
	107		1240/Z2	ARR/ARR	840/Y11	2558/T1
	108		1240/Z6	ARR/ARR	273/W1	2558/T1
	109		1240/Z3	ARR/ARR	119/W20	2558/T1
	110		1240/Z11	ARR/ARR	119/W20	2558/T1
	111		1240/Z13	ARR/ARR	273/W1	2558/T1
317	112	Jim Thomson, J&D Blues.	4046/Z7		768/X1 Oddacre	2690/T18 SP Dalpeddar
	113		2281/Z18		1574/X3 Firth	752/S12 Riddings
	114		4046/Z13		1411/X16 Hallmain	2690/W12 Tygwyn
	115		4046/Z6		768/X1 Oddacre	4046/X1 JD Blues
	116		4046/Z3		768/X1 Oddacre	2690/T18 SP Dalpeddar
318	117*	Robert J. McTurk, BARLAES. (Bred by R. D. Archer & Son, CARRY HOUSE)	281/X1	ARR/AHQ	119/T1 Cocklaw	
	118*	(Bred by M. C. Robinson & Son, COCKLAW)	119/W26	ARR/ARQ	2864/W7 Cendy	
	119		2217/Z1	ARR/AHQ	281/X1 Carry House	2558/S4 Brierside
	120		2217/Z2	ARR/ARR	281/X1 Carry House	2558/S4 Brierside
	121		2217/Z8	ARR/ARR	281/X1 Carry House	7/G2 Broomhills
	122		2217/Z7	ARR/ARR	281/X1 Carry House	1521/P1 Teviot
	123		2217/Z3	ARR/ARR	281/X1 Carry House	584/T1 Middle
	124		2217/Z5	ARR/ARR	281/X1 Carry House	1521/P1 Teviot
	125		2217/Z6	ARR/ARR	281/X1 Carry House	896/N22 Fell View
	126		2217/Z9	ARR/AHQ	281/X1 Carry House	584/T1 Middle
291	127	Mrs. Kate Smith, LOW ARKLAND.	1553/Z1	ARR/ARR	1521/V18 Teviot	1000/T1 Ewanston
	128		1553/Z3	ARR/ARR	1257/W11 Cassington	1521/V18 Teviot
	129		1553/Z8	ARR/ARR	1257/W11 Cassington	1521/V18 Teviot
	130		1553/Z7	ARR/ARR	1257/W11 Cassington	1000/T1 Ewanston
	131		1553/Z4	ARR/ARR	1257/W11 Cassington	3685/S3 Marr
	132		1553/Z5	ARR/ARR	1257/W11 Cassington	1414/A6 Kirhton
290	133*	James Bell, COTTAGE. (Bred by J. & J. Cunningham, PARKGATE)	1386/X6		1386/T2 Parkgatestone	
288-289	134	Alec Brown, MACQUESTON.	2571/Z22	ARR/AHQ	752/X5 Riddings	1503/W9 Greenliggs
	135		2571/Z9	ARR/AHQ	752/X5 Riddings	1503/W9 Greenliggs
	136		2571/Z20	ARR/ARQ	752/X5 Riddings	1503/W9 Greenliggs
	137		2571/Z25	ARQ/AHQ	4046/Y1 JD Blues	1503/W9 Greenliggs
	138		2571/Z12	ARQ/AHQ	752/X5 Riddings	1538/R40 Midlock

<i>Pen No.</i>	<i>Lot No.</i>	<i>Exhibitor</i>	<i>Reg. No.</i>	<i>NSP Genotype</i>	<i>Sire</i>	<i>Sire of Dam</i>
	139		2571/Z14	ARR/AHQ	752/X5 Riddings	1538/P13 Midlock
	140		2571/Z3	ARR/ARR	1503/W9 Greenriggs	1690/L11 BMD
	141		2571/Z31	ARR/ARR	3425/Y3 Highberries	2329/V1 Craigskean
	142		2571/Z32	ARR/ARR	3425/Y3 Highberries	2329/V1 Craigskean
	143		2571/Z33	ARR/ARQ	3425/Y3 Highberries	2329/V1 Craigskean
	144		2571/Z34	ARR/ARQ	3425/Y3 Highberries	1538/R40 Midlock
	145		2571/Z27	ARR/ARR	2571/Y3 Macqueston	2224/T1 Breckhouse
	146		2571/Z28	ARQ/ARQ	2571/Y3 Macqueston	2329/V1 Craigskean
	147		2571/Z17	ARR/AHQ	752/X5 Riddings	2329/V1 Craigskean
287	148	Miss Eilidh J. Parker, OLD HALL FARM.	912/Z6		3350/Y2 Meroeak	2329/R2 Craigskean
287	149-150	L. W. & M. J. Parker, HALLMAINS.	912/Z1 to 12/Z2		3350/Y2 Meroeak	1538/R37 Midlock Bonnie Lugs
	151		912/Z10		3350/Y2 Meroeak	3419/W23 Wellan
	152-154		912/Z21 to 912/Z23		1411/V12 Duhonw	1690/R6 BMD Delamford
286	155	C. Driver, ROSEGROVE. (Bred by James E. Taylor, LOCHHILL)	1420/Z10	ARR/ARR	1463/W3 Mossvale	1939/T1 Hazelwood
	156		1420/Z4	ARR/ARR	840/Y1 Rossiebank	1463/W3 Mossvale
	157	(Bred by Exhibitor)	2267/Z8	ARR/ARR	1420/X18 Lochhill	1420/X18 Lochhill
	158		2267/Z1	ARR/ARR	1420/X18 Lochhill	1420/X18 Lochhill
	159		2267/Z5	ARR/ARR	1420/X18 Lochhill	1420/X18 Lochhill
285	160*	Iain Stewart, HALLOWCHAPEL. (Bred by Mr McDonald, MUIREDGE)	2731/X2			
	161	(Bred by Exhibitor)	1440/Z2		2329/Y14 Craigskean	3199/R4 Leadburnlea
284	162	W. Lockhart & Son, LOGGAN PARK.	3768/Z3	ARR/AHQ	2571/Y1 MacQuestion	2690/S1 S.P. Dalpeddar
	163		3768/Z5	ARR/AHQ	2571/Y1 Macqueston	2690/W5 S.P. Dalpeddar
	164		3768/Z8	ARR/ARQ	2571/Y1 Macqueston	3768/T1 Laggan Park
	165		3768/Z7	ARR/ARR	2690/Y6 S.P. Dalpeddar	2571/T14 Macqueston
	166		3768/Z9	ARR/ARR	2690/Y6 S.P. Dalpeddar	3768/T1 Laggan Park
	167		3768/Z4	ARR/AHQ	2690/Y6 S.P. Dalpeddar	912/N7 Hallmains
	168		3768/Z10	ARR/ARR	2571/Y1 Macqueston	912/V2 Hallmains
283	169	D. Brown & Co., TUNDERGARTH.	3842/Z7	ARR/ARR	859/X1 Drumhumphry	2565/T3 Rowandale
	170		3842/Z9	ARR/AHQ	859/X1 Drumhumphry	2525/T2 Culshan
	171		38429/Z12	ARR/ARQ	859/X1 Drumhumphry	2525/W4 Culshan
	172		3842/Z13	ARR/ARR	859/X1 Drumhumphry	2525/W4 Culshan
282	173	Hannah Stenton, THORNTON LE DALE.	3900/Z1	ARR/ARR	1939/V12 Hazelwood	281/S12 Carry House

<i>Pen No.</i>	<i>Lot No.</i>	<i>Exhibitor</i>	<i>Reg. No.</i>	<i>NSP Genotype</i>	<i>Sire</i>	<i>Sire of Dam</i>
281	174-175	Andrew Morton, GRENNAN.	3857/Z8 to 3857/Z9		1630/Y15 Dunbrach	1538/V28 Midlock
	176		3857/Z3		1630/Y15 Dunbrach	1538/V28 Midlock
279	178	S. Park & E. Mills, S.P. DALPEDDAR.	2690/Z4		1080/Y1 Shafthill	3749/W6 Forebrae
	179		2690/Z12		2224/T1 Breckhouse	3749/W1 Forebrae
	180		2690/Z11		2224/T1 Breckhouse	3749/W1 Forebrae
	181		2690/Z5		1080/Y1 Shafthill	2571/W8 Macqueston
280	177	J. Harkness, LANRICK HALL.	3266/Z1		X5 Glenelg Greenfield	
278	182	A. Hamilton, MARR.	3685/Z5	ARR/ARR	2571/W8 Macqueston	2571/T9 Macqueston
	183		3685/Z4	ARR/ARR	1080/J1 Shafthill	2571/T9 Macqueston
	184-186		3686/Z1 to 3686/Z3	ARR/ARR	3685/X3 Marr	1411/V12 Dunhouw
277	187	Jackson Pringle, STROANPATRICK.	2933/Z6	ARR/ARR	2690/X1 S.P. Dalpeddar	2690/V3 S.P. Dalpeddar
	188		2933/Z7	ARR/ARR	2690/X1 S.P. Dalpeddar	1000/V1 Ewanstone
	189		2933/Z5	ARR/ARR	2690/X1 S.P. Dalpeddar	2690/V3 S.P. Dalpeddar
	190		2933/Z1	ARR/ARR	2690/X2 S.P. Dalpeddar	2571/S2 Macqueston
	191		2933/Z8	ARR/ARR	2690/X1 S.P. Dalpeddar	1000/V1 Ewanstone
276	192	Matthew C. Brown, CAIRNSMORE.	2153/Z1	ARR/ARR	1553/X3 Low Arkland	1257/W2 Cassington
	193		2153/Z2	ARR/ARR	1553/X3 Low Arkland	1257/R2 Cassington
	194		2153/Z3	ARR/ARR	1553/X3 Low Arkland	1257/W2 Cassington
	195		2153/Z4	ARR/ARR	1553/X3 Low Arkland	1257/R2 Cassington
275	196	David Cruikshank, CD FLOCK.	4180/Z1	ARR/AHQ	2224/T1 Breckhouse	2834/S2 Hafrena
	197		4180/Z2	ARR/ARR	2224/T1 Breckhouse	
					<i>Sire of Dam:</i>	
NO. 7 ALLEY						
251	198	Robert Watson, HIGH BORGUE.	3602/Z1	ARR/ARR	1257/Y36 Cassington	912/T2 Hallmains
	199		3602/Z3	ARR/AHQ	1257/Y36 Cassington	912/T2 Hallmains
	200		3602/Z9	ARR/ARR	3602/Y4 High Borgue	912/T2 Hallmains
	201		3602/Z4	ARR/ARR	1257/Y36 Cassington	912/T2 Hallmains
	202		3602/Z7	ARR/ARR	3602/W3 High Borgue	708/W2 Bowder
	203		3602/Z10	ARR/ARR	1257/Y36 Cassington	912/T2 Hallmains
	204		3602/Z5	ARR/ARR	1257/Y36 Cassington	912/T2 Hallmains
	205		3602/Z8	ARR/ARQ	1257/Y36 Cassington	2800/P2 Nithsdale
252	206	Shirley Hamilton, CAIRNSMIDDY.	2637/Z1	ARR/ARR	1080/Y1 Shafthill	1000/P1 Ewanston
	207-208		2637/Z5 to 2637/Z6	ARR/ARR	1080/Y1 Shafthill	1440/N7 Knockairdie
	209		2637/Z7	ARR/ARR	1080/Y1 Shafthill	1000/P1 Ewanston

<i>Pen No.</i>	<i>Lot No.</i>	<i>Exhibitor</i>	<i>Reg. No.</i>	<i>NSP Genotype</i>	<i>Sire</i>	<i>Sire of Dam</i>
	210		2637/Z11	ARR/ARR	1080/Y1 Shafthill	1140/N7 Knockairdie
	211		2637/Z4	ARR/ARR	3989/X16 Clennel	1140/N7 Knockairdie
	212		2637/Z8	ARR/ARR	1080/Y1 Shafthill	1140/N7 Knockairdie
253	213-214	John Fisher, PADDOCK HALL.	3894/Z1 to 3894/Z2		3900/X1 Thornton-Le-Dale	1257/S8 Cassington
	215		3894/Z3		3900/X1 Thornton-Le-Dale	3114/V40 Shrewbridge
	216		3894/Z5		752/X1 Riddings	2834/S2 Hafrena
254	217	David Cruikshank, NITHSDALE.	2800/Z16	ARR/AHQ	1257/W2 Cassington	1521/V9 Teviot
	218		2800/Z8	ARR/ARR	8114/Y36 Shrewbridge	2217/S1 Barlaes
	219	(Bred by A. Bastian, ROWANDALE)	2565/Z3	ARR/ARR	1521/Y5 Teviot	119/M15 Cocklaw
	220	(Bred by Exhibitor)	2800/Z11	ARR/ARQ	2217/S1 Barlaes	395/N3 Parcelstown
	221		2800/Z17	ARR/ARR	1257/W2 Cassington	2800/N25 Nithsdale
	222		2800/Z18	ARR/ARR	1257/W2 Cassington	2217/S1 Barlaes
	223		2800/Z10	ARR/ARR	3363/Y4 Craig-yr-Orsedd	2217/S1 Barlaes
	224		2800/Z3	ARR/ARR	3570/X2 Longmynd	584/T1 Middle Dukesfield
	225		2800/Z5	ARR/ARR	2800/Y1 Nithsdale	2963/V6 Robleston
	226	(Bred by A. Bastian, ROWANDALE)	2565/Z11	ARR/ARR	2565/V8 Rowandale	2809/N25 Nithsdale
255	227	Mrs. M. Bodle, SAMM.	3828/Z5	ARR/ARQ	X15 Ewanston	T2 Bellimore
	228		3828/Z9	ARR/ARR	X15 Ewanston	T2 Bellimore
	229		3828/Z10	ARQ/ARQ	X15 Ewanston	T2 Bellimore
256	230	P. B. Adams & Co., CLUGSTON.	1724/Z11	ARR/ARR	584/Y13 Middle Dukesfield	2800/R5 Nithsdale
	231		1724/Z1	ARR/ARR	1521/V9 Teviot	2800/R5 Nithsdale
	232		1724/Z15	ARR/ARR	2800/R5 Nithsdale	2217/S2 Barlaes
	233		1724/Z6	ARR/ARR	1521/X1 Teviot	2217/S2 Barlaes
	234		1724/Z7	ARR/ARR	1521/X1 Teviot	2800/R5 Nithsdale
	235		1724/Z8	ARR/ARR	1521/X1 Teviot	2217/S2 Barlaes
	236		1724/Z2	ARR/ARR	1521/V9 Teviot	2800/R5 Nithsdale
	237		1724/Z3	ARR/ARR	1521/V9 Teviot	2217/S2 Barlaes
	238		1724/Z4	ARR/ARR	1521/V9 Teviot	2800/R5 Nithsdale
	239		1724/Z12	ARR/ARR	584/Y13 Middle Dukesfield	2800/R5 Nithsdale
257	240-242	J. Cannon, TORHOUSE.	2307/Z3 to 2307/Z5		273/X1 Hillside	1724/R12 Clugston
	243		2307/Z7		273/X1 Hillside	840/N20 Rossiebank
	244		2307/Z8		273/X1 Hillside	2800/R5 Nithsdale

<i>Pen No.</i>	<i>Lot No.</i>	<i>Exhibitor</i>	<i>Reg. No.</i>	<i>NSP Genotype</i>
RAM LAMBS				
259	245-247	T. Anderson, GUEL.T.	2120/A1 to 2120/A3	<i>Sire:</i> 1538/X17 Midlock <i>Sire of Dam:</i>
260	248	James Common & Son, CROSSDYKES.	3765/A1	ARR/ARR <i>Sire:</i> 1553/Y2 Low Arkland <i>Sire of Dam:</i> 3246/X3 Heddon Valley 'A'
	249		3765/A2	ARR/ARR <i>Sire:</i> 1553/Y2 Low Arkland <i>Sire of Dam:</i> 584/X16 Middle Dukesfield
261	250	A. Hamilton, MARR.	3685/A1	ARR/ARR <i>Sire:</i> 1630/Y2 Dunbrach <i>Sire of Dam:</i> 2571/T9 Macqueston
	251		3685/A2	ARR/AHQ <i>Sire:</i> 1630/Y2 Dunbrach <i>Sire of Dam:</i> 2571/T9 Macqueston
	252		3685/A6	ARR/ARR <i>Sire:</i> 1411/V12 Dunhouw <i>Sire of Dam:</i> 2571/T9 Macqueston
	253		3685/A3	ARR/ARR <i>Sire:</i> 1630/Y2 Dunbrach <i>Sire of Dam:</i> 2571/T9 Macqueston
262	254		Mrs. Kate Smith, LOW ARKLAND.	1553/A1
	255	1553/A2		ARR/ARR <i>Sire:</i> 2800/W11 Nithsdale <i>Sire of Dam:</i> 1257/W11 Cassington
	256-257	1553/A3 to 1553/A4		ARR/ARR <i>Sire:</i> 1521/V18 Teviot <i>Sire of Dam:</i> 1000/T1 Ewanston
	258	1553/A5		ARR/ARR <i>Sire:</i> 2800/W11 Nithsdale <i>Sire of Dam:</i> 1257/W11 Cassington
	259	1553/A6		ARR/ARR <i>Sire:</i> 2800/W11 Nithsdale <i>Sire of Dam:</i> 1521/V18 Teviot
263	260	Mrs. Elizabeth Gillon, CRAIG.		2760/A1
	261		2760/A2	ARR/ARR <i>Sire:</i> 2571/W9 Macqueston <i>Sire of Dam:</i> 2760/X6 Craig
	262		2760/A3	ARR/ARR <i>Sire:</i> 2571/W9 Macqueston <i>Sire of Dam:</i> 2760/X7 Craig
	263		2760/A4	ARR/ARR <i>Sire:</i> 2571/W9 Macqueston <i>Sire of Dam:</i> 2760/X6 Craig
	264		2760/A5	ARR/ARR <i>Sire:</i> 1574/X4 Firth <i>Sire of Dam:</i> 2760/Y9 Craig
264	265		Fiona Gilligan, HIGH CREOCH.	2384/A1
	266	2384/A2		ARQ/AHQ <i>Sire:</i> 2554/Z1 Finniness <i>Sire of Dam:</i> 2571/V1 Macqueston
264A	267	Rosemary Maxwell, COSHOGLE/BOATRIG.	3830/A6	ARR/AHQ <i>Sire:</i> 1080/Y4 Shafthill <i>Sire of Dam:</i> 752/W7 Riddings
240	268	McKill Maxwell & Co., COSHOGLE.	1902/A1	ARR/ARR <i>Sire:</i> 1080/Y4 Shafthill <i>Sire of Dam:</i> 1510/X2 Red Cottage
	269		1902/A2	ARR/ARR <i>Sire:</i> 1080/Y4 Shafthill <i>Sire of Dam:</i> 980/P3 Hewgill
	270-271		1902/A3 to 1902/A4	ARR/ARR <i>Sire:</i> 1080/Y4 Shafthill <i>Sire of Dam:</i> 1257/S32 Cassington
	272		1902/A5	ARR/ARR <i>Sire:</i> 1080/Y4 Shafthill <i>Sire of Dam:</i> 752/W7 Riddings
239	273		Alison Bastian, ROWANDALE.	2565/A6
	274	2565/A1		ARR/ARR <i>Sire:</i> 1521/Y5 Teviot <i>Sire of Dam:</i> 2565/V8 Rowandale
	275	2565/A5		ARR/ARR <i>Sire:</i> 1521/Y5 Teviot <i>Sire of Dam:</i> 2565/V8 Rowandale
	276	2565/A4		ARR/ARQ <i>Sire:</i> 1521/Y5 Teviot <i>Sire of Dam:</i> 2565/V8 Rowandale
	277	2565/A9		ARR/ARR <i>Sire:</i> 2565/V8 Rowandale <i>Sire of Dam:</i> 2808/W1 Border Esk
	278	2565/A10		ARR/ARR <i>Sire:</i> 1521/Y5 Teviot <i>Sire of Dam:</i> 2565/V8 Rowandale
238	279-282	Iain Stewart, HALLOW CHAPEL.	1440/A1 to 1440/A4	<i>Sire:</i> 2731/X2 Muiredge <i>Sire of Dam:</i> 3659/T1 Burnside
237	283-286	H. Brown, LEADBURNLEA.	3199/A1 to 3199/A4	<i>Sire:</i> 1521/W1 Teviot 'E' Plus <i>Sire of Dam:</i>

<i>Pen No.</i>	<i>Lot No.</i>	<i>Exhibitor</i>	<i>Reg. No.</i>	<i>NSP Genotype</i>	<i>Sire</i>	<i>Sire of Dam</i>
236	287	Mr. John Park, FOREBRAE.	3749/A1		1080/Y1 Shafthill	1080/X18 Shafthill
	288		3749/A2		1080/Y1 Shafthill	2224/T1 Breckhouse
	289		3749/A3		1080/Y1 Shafthill	2690/S1 SP Dalpeddar
	290		3749/A4		1538/Y34 Midlock	224/T1 Breckhouse
235-234	291-293		Andrew McQuistin, BARNSHANGAN.	2884/A1 to 2844/A3		1574/Y16 Firth
	294	2884/A4			800/W1 Brownleazes	678/T1 Oddacres
	295-297	2884/A5 to 2884/A7			800/W1 Brownleazes	3273/R1 Glethinog
	298-300	2884/A8 to 2884/A10			800/W1 Brownleazes	678/T1 Oddacres
	301-303	2884/A11 to 2884/A13			800/W1 Brownleazes	678/T1 Oddacres
233	304	Hannah Stenton, THORNTON LE DALE.	3900/A1	ARR/ARR	1939/V12 Hazelwood	468/S1 Walton
	305		3900/A2	ARR/ARR	1939/V12 Hazelwood	119/W19 Cocklaw
	306		3900/A3	ARR/ARR	1939/V12 Hazelwood	1521/V4 Teviot
	307		3900/A4	ARR/ARR	1939/V12 Hazelwood	3900/W1 Thornton Le Dale 'E' Plus
	308		3900/A5	ARR/ARR	3900/Z1 Thornton Le Dale	3900/W1 Thornton Le Dale 'E' Plus
	309		3900/A6	ARR/ARR	3900/Z1 Thornton Le Dale	3900/W1 Thornton Le Dale 'E' Plus
	310		3900/A7	ARR/ARR	1939/V12 Hazelwood	119/W19 Cocklaw
232/231	311		S. Park & E. Mills, S.P. DALPEDDAR.	2690/A1		2070/Z31 Old Hemley
	312	2690/A17			1458/Z3 Tygwyn	1538/P13 Midlock
	313	2690/A18			1458/Z3 Tygwyn	1060/W4 Brow Top
	314	2690/A2			2070/Z31 Old Hemley	1538/P13 Midlock
	315	2690/A15			1080/Y1 Shafthill	2224/T1 Breck House
	316	2690/A3			2070/Z31 Old Hemley	1458/V1 Tygwyn
	317	2690/A19			1458/Z3 Tygwyn	1538/P13 Midlock
	318	2690/A4			2070/Z31 Old Hemley	1538/P13 Midlock
	319	2690/A5			2070/Z31 Old Hemley	1538/P13 Midlock
	320	2690/A6			2070/Z31 Old Hemley	2224/T1 Breck House
	321	2690/A7			2070/Z31 Old Hemley	2224/T1 Breck House
	322	2690/A8			1070/Z31 Old Hemley	1538/P13 Midlock
	323	2690/A9			2070/Z31 Old Hemley	2571/W8 Macqueston
	324	2690/A10			2070/Z31 Old Hemley	1060/W4 Brow Top
230	325	R. H. Bell & Co., TEVIOT.	1521/A1	AWAITING RESULTS	1521/Y15 Teviot	1521/T3 Teviot
	326-327		1521/A2 to 1521/A3		1521/Y15 Teviot	3151/S41 Scrainwood
	328		1521/A4		1521/Y15 Teviot	1521/P1 Teviot

<i>Pen No.</i>	<i>Lot No.</i>	<i>Exhibitor</i>	<i>Reg. No.</i>	<i>NSP Genotype</i>	<i>Sire</i>	<i>Sire of Dam</i>
	329		1521/A5		1521/Y5 Teviot	3151/S41 Scrainwood
	330		1521/A9		1521/Z5 Teviot	2800/W10 Nithsdale
229	331-332	James Bell, COTTAGE.	3331/A2 to 3331/A3		3419/W23 Wellan	1411/T2 Duhonw
	333		3331/A1		3419/W23 Wellan	1538/T1 Midlock
	334		3331/A25		2070/Z31 Old Hemley	3419/W23 Wellan
	335-336		3331/A28 to 3331/A29		2070/Z31 Old Hemley	1538/T1 Midlock
	337		3331/A27		2070/Z31 Old Hemley	1538/T1 Midlock
	338		3331/A5		3419/W23 Wellan	1386
	339		3331/A4		3419/W23 Wellan	1538/T1 Midlock
	340		3331/A6		3419/W23 Wellan	1819/R1 Seal Houses
	341		3331/A7		3419/W23 Wellan	1538/T1 Midlock
	342		3331/A21		1411/T2 Duhonw	1538/T1 Midlock
228	343	James E. Taylor, LOCHHILL.	1420/A1	ARR/AHQ	840/Y1 Rossiebank	1939/T1 Hazelwood
	344		1420/A2	ARR/ARR	840/Y1 Rossiebank	1567/V2 Glenelo
	345-346		1420/A3 to 1420/A4	ARR/ARR	840/Y1 Rossiebank	1463/W3 Mossvale
	347		1420/A5	ARR/AHQ	840/Y1 Rossiebank	1939/T1 Hazelwood
	348		1420/A6	ARR/AHQ	840/Y1 Rossiebank	1567/V2 Glenelo
227	349	D. L. & S. Currie, BRAEGARRIE.	2280/A1		1574/W14 Firth	1106/S20 Nookton
	350		2280/A3		3659/T1 Burnside	2808/W2 Border Esk
226	351-356	McConchie Partnership, MOSSYARD.	1240/A1 to 1240/A6	ARR/ARR	119/W20	2558/T1
225	357	Stephen J. Crozier, WATERSYKE.	2399/A12	ARR/ARR	2399/Y8 Watersyke 'E' Plus	3246/X3 Heddon Valley
	358		2399/A13	ARR/ARR	3842/Z1 Tundergarth	1420/S1 Lochhill 'E' Plus
	359		2399/A11	ARR/ARR	2399/Y8 Watersyke 'E' Plus	1420/S1 Lochhill 'E' Plus
	360		2399/A10	ARQ/ARR	2399/Y8 Watersyke 'E' Plus	1420/S1 Lochhill 'E' Plus
NO. 6 ALLEY						
207	361	J. & M. Kerr, CRAIGSKEAN.	2329/A1	ARR/ARR	1574/Z1 Firth	1080/S3 Shafthill
	362		2329/A2	ARR/ARR	1574/Z1 Firth	1458/V1 Tygwyn
	363-364		2329/A9 to 2329/A10	ARR/ARR	1574/Z1 Firth	1458/V1 Tygwyn
	365		2329/A3	ARR/ARR	1574/Z1 Firth	2329/P14 Craigskean
	366		2329/A12	ARR/ARR	752/Y29 Riddings	1458/V1 Tygwyn
	367		2329/A11	ARR/ARR	752/Y29 Riddings	1458/V1 Tygwyn
	368		2329/A13	ARR/ARR	752/Y29 Riddings	1458/V1 Tygwyn
	369		2329/A15	ARR/ARR	752/Y29 Riddings	1458/V1 Tygwyn

<i>Pen No.</i>	<i>Lot No.</i>	<i>Exhibitor</i>	<i>Reg. No.</i>	<i>NSP Genotype</i>	<i>Sire</i>	<i>Sire of Dam</i>
	370		2329/A18	ARR/ARR	2571/Z7 MacQueston	1080/W1 Shafthill
208	371	R. D. Archer & Son, CARRY HOUSE.	281/A1	ARR/ARR	3246/X4 Heddon Valley	281/T4 Carry House
	372		281/A2	ARR/ARR	3246/X4 Heddon Valley	119/T1 Cocklaw
	373		281/A6	ARR/AHQ	281/Z1 Carry House	281/T4 Carry House
	374		281/A7	ARR/ARR	281/Z1 Carry House	2864/V4 Cendy
	375		281/A14	ARR/AHQ	1574/X3 Firth	281/S29 Carry House
	376		281/A29	ARR/AHQ	281/X39 X Factor Carry House	2944/V3 Bull & Cave
	377		281/A30	ARR/ARR	281/X39 Carry House X Factor	1503/T3 Greenriggs
	378		281/A31	ARR/AHQ	281/X39 Carry House X Factor	752/S12 Riddings
209	379	Robert J. McTurk, BARLAES.	2217/A1	ARR/ARQ	119/W26 Cocklaw	1521/P1 Teviot
	380		2217/A2	ARR/ARR	281/X1 Carry House	2558/S4 Brieryside
210	381	Jim Thomson, J D BLUES.	4046/A1		3749/V19 Forebrae	2090/V15 SP Dalpeddar
	382		4046/A2		281/Z18 Carry House	1538/W60 Midlock
	383		4046/A7		4046/Z9 J D Blues	2690/T19 SP Dalpeddar
	384		4046/A8		4046/Z9 J D Blues	4046/X2 J D Blues
211	385	W. & J. Young, ESPIE.	2116/A1	ARR/ARR	2571/X3 Macqueston	2571/V2 Macqueston
	386		2116/A2	ARR/ARR	2571/X3 Macqueston	1124/W2 Knockairdie
	387		2116/A3	ARR/ARQ	2571/X3 Macqueston	1124/W2 Knockairdie
212	388	David Cruickshank, NITHSDALE.	2800/A15	ARR/ARR	1257/W2 Cassington	2800/N25 Nithsdale
	389		2800/A6	ARR/ARR	1257/W2 Cassington	2800/N25 Nithsdale
	390		2800/A5	ARR/ARR	2800/N25 Nithsdale	2217/S1 Barlaes
	391		2800/A4	ARR/ARR	2800/N25 Nithsdale	1521/V9 Teviot
	392		2800/A16	ARR/ARR	1257/W2 Cassington	2565/V8 Rowandale
	393		2800/A13	ARR/ARR	1257/W2 Cassington	2217/S1 Barlaes
213	394	Robert Neill, ROSSIEBANK.	840/A1	ARR/AHQ	1939/Y1 Hazelwood	119/R3 Cocklaw
	395		840/A2	ARR/ARQ	1939/Y1 Hazelwood	119/R3 Cocklaw
	396-397		840/A10 to 840/A11	ARR/ARQ	840/X2 Rossiebank	896/R1 Fellview
	398		840/A3	ARR/ARR	1939/Y1 Hazelwood	119/R3 Cocklaw
	399		840/A4	ARR/ARQ	1939/Y1 Hazelwood	119/R3 Cocklaw
	400		840/A5	ARR/ARR	1939/Y1 Hazelwood	119/R3 Cocklaw
	401		840/A12	ARR/ARR	840/X2 Rossiebank	896/R1 Fellview
214	402	Samuel Black & Son, HILLSIDE.	273/A1		1521/Y4 Teviot	1257/T1 Cassington
	403-404		273/A2 to 273/A3		1521/Y4 Teviot	1000/W3 Ewanston

<i>Pen No.</i>	<i>Lot No.</i>	<i>Exhibitor</i>	<i>Reg. No.</i>	<i>NSP Genotype</i>	<i>Sire</i>	<i>Sire of Dam</i>	
191	405	A. & L. Kerr, HAYHILL.	4203/A1		1538/Y16 Midlock	963/V15 Lunsdale	
190	406	David Cruikshank, CD FLOCK.	4180/A3	ARR/ARR	2187/Z12 St Ravenscar	1538/W25 Midlock Contraversay	
	407		4180/A17	ARR/ARR	2187/Z12 St Ravenscar	1538/W25 Midlock Contraversay	
	408		4180/A20	ARR/ARQ	2187/Z12 St Ravenscar	1538/W25 Midlock Contraversay	
189	409	Stuart Mitchell, MAINS OF LARG.	3725/A1		2329/X1 Craigskean	2944/V3 Bull & Cave	
	410-411		3725/A2 to 3725/A3		2329/X1 Craigskean	2690/V1 Dalpeddar	
	412-413		3725/A6 to 3725/A7		2329/Z3 Craigskean	2690/V1 Dalpeddar	
188	414		Alec Brown, MACQUESTON.	2571/A2	ARR/AHQ	752/X5 Riddings	752/V15 Riddings
	415	2571/A3		AWAITING RESULTS	752/X5 Riddings	2224/T1 Breckhouse	
	416	2571/A4		ARR/ARR	752/X5 Riddings	2224/T1 Breckhouse	
	417	2571/A17		ARR/AHQ	1538/Y34 Midlock	752/X5 Riddings	
	418	2571/A11		ARR/ARR	1503/W9 Greenriggs	752/V5 Riddings	
	419	2571/A12		ARR/ARR	1503/W9 Greenriggs	2329/V1 Craigskean	
187	420-421	John Wight & Sons, MIDLOCK.		1538/A3 to 1538/A4		1538/W25 Midlock	1538/Z1 Midlock
	422-424		1538/A26 to 1538/A28		1538/Z1 Midlock	752/X1 Riddings	
	425		1538/A14		752/X1 Riddings	1257/Z1 Cassington	
186	426	M. & C. Drummond, CASSINGTON.	1257/A4	ARR/ARR	1257/Z1 Cassington	1124/R1 Knockairdie	
	427		1257/A24	ARR/ARR	3900/X1 Thornton-Le-Dale	1521/W1 Teviot 'E' Plus	
	428		1257/A2	ARR/ARR	1257/Z1 Cassington	1521/W1 Teviot 'E' Plus	
	429		1257/A21	ARR/ARR	3900/X1 Thornton-Le-Dale	7/W4 Broomhills	
	430		1257/A26	ARR/ARQ	3900/X1 Thornton-Le-Dale	755/V2 Salwick	
	431		1257/A5	ARR/ARR	1257/Z1 Cassington	1124/R1 Knockairdie	
	432		1257/A6	ARR/ARR	7/W4 Broomhills	2800/P3 Nithsdale	
	433		1257/A16	ARR/ARQ	3900/X1 Thornton-Le-Dale	7/W4 Broomhills	
185	434		R. & J. Milroy, CAIRNWHIN.	3862/A1	ARR/AHQ	3230/Y4 Bewcastle	2187/T12 St Ravenscar
	435			3862/A2	ARR/ARR	3230/Y4 Bewcastle	2187/T12 St Ravenscar
184	436	Mr. M. Gray, ESPLEY.	4024/A1	ARR/ARQ	2217/Y33 Barlaes	1463/W2 Mossvale	
	437		4024/A3	ARR/ARR	2217/Y33 Barlaes	3114/S20 Shrewbridge	
	438		4024/A4	ARR/ARQ	2217/Y33 Barlaes	3114/S20 Shrewbridge	
	439		4024/A2	ARR/ARR	2217/Y33 Barlaes	1463/W2 Mossvale	
						2217/Y33 Barlaes	1463/W2 Mossvale

Pen *Lot No.* *Exhibitor*
No.

Reg. No.

NSP
Genotype

	1st	2nd	3rd	4th
CLASS 1				
CLASS 2				
CLASS 3				
CLASS 4				
CLASS 5				
CLASS 6				
CLASS 7				
CLASS 8				

MALE CHAMPION	
FEMALE CHAMPION	
CHAMPION	
RESERVE CHAMPION	



2571/2005 CASTLE DOUGLAS TOP PRICE 2007

Bred and Exhibited by A Brown MACQUESTON. Purchased by Messrs Grahame, BURNBANK for £2,400