



BLUEFACED LEICESTER SHEEP BREEDERS' ASSOCIATION

BALLYMENA SALE

Saturday 17th September 2011



1691/B011 BALLYMENA CHAMPION 2010

Bred & Exhibited by Mr R Loughridge, ORRAVALE

Purchased for £3,255.00 by J L Skuce, 138 Curragh Road,

Sire 1538/A026 MIDLOCK

*"The Future's Bright,
the Future's Blue"*

GLENS FARM SUPPLIES LTD.

SPONSOR OF THE SHOW AND SALE



MARTINSTOWN BRANCH

Phone 028 2175 8800
Phone/ fax 028 2175 8692

CUSHENDALL BRANCH

Phone 028 2177 2692
Phone/fax 028 2177 1523

ARMOY BRANCH

Phone 028 2075 1553

HILLTOWN BRANCH

Phone/ fax 028 4063 8889

JAMES DELARGY

078 0262 5522

“MUCH MORE FOR LESS”

Proprietors Eamonn Gillan, James Delargy

www.glensanimalhealth.com



**BLUEFACED LEICESTER SHEEP
BREEDERS' ASSOCIATION**



ANNUAL SHOW AND SALE

**328 Registered Bluefaced Leicesters
198 Shearling Rams, 109 Ram Lambs and 21 Females**

Saturday 17th September 2011

in

**McClellands Auction Mart,
Woodside Road, Ballymena**

By J. A. McClelland & Sons (aucts) Ltd.

Judging 9.00 a.m. prompt

Sale commences 11.00 a.m.

CLASS 1 – Aged & Shearling Rams

CLASS 2 – Ram Lambs

CLASS 3 – Females

Prize Money: 1st £20, 2nd £15, 3rd £10, 4th £5

Kindly sponsored by Glen Farm Supplies Ltd.

Rosettes to fourth place

Champion £60 - Reserve £40

JUDGE:

Mr. J. Herdman, Edlingham Newtown, Alnwick, Northumberland

CHIEF STEWARD:

Mr. Stewart Park

ONLY CATALOGUED SHEEP WILL BE ALLOWED IN THE SALE

SECRETARY: Helen Carr-Smith, Riverside View, Warwick Road, Carlisle. CA1 2BS.

Tel: 01228 598022 Fax: 01228 598021

Printed by Solway Offset *the* Printers, 11 Catherinefield Ind. Estate, Heathhall, Dumfries.

EXHIBITOR	FLOCK No.	FLOCK PREFIX
J Adams & Sons, 139 Cloughwater Road, Ballymena, Co Antrim	1337	HOLMVIEW
J Blaney, 9 Cloughs Road, Cushendall, Co Antrim	3920	TIEVEBUAILE FARM
J Brown & Sons, Beechlodge, 12 Clay Road, Banbridge, Co Down	1763	BEECHLODGE
C Butler, 121 Cushendall Road, Ballyvoy, Ballycastle, Co Antrim	4266	GLENMAKEERAN
Alistair Christie, 76 Benvardeen Road, Ballymoney, Co Antrim	3634	THE FIELDS
C A Coulter, Carrick Rock Farm, Castlederg, Co Tyrone	3397	CARRICK ROCK
S A P Cowan, 26 Cascum Road, Banbridge	3482	TULLYEAR
Alan Dickson, 23 Lissadell Drive, Magherafelt, Co. Londonderry, BT45 5AR	2084	TREEVALE
S Duncan, 11 Largy Road, Crumlin, BT29 4AH	1338	HILLVALE
M Elliott, 86 Pharis Road, Armoy, Ballymoney, Co Antrim	3355	BALLYKNOCK VIEW
H & S Forsyth, Cold Blow Farm, 41 Carrickfergus Road, Ballynure, Ballyclare	4044	BRYANTANG BLUES
G Gault, 67 Ballybracken Road, Doagh, Ballyclare	1626	CRAWFORDSLAND
R Gault, 39 Carnlea Road, Ballyclare, Co Antrim	1622	CARNLEA
R & J Graham, 140 Auchmaskeach Road, Dromara, Dromore, Co Down	3417	TULLYVALLEN
T S Hammond, 1 Tullylagan Road, Sandholes, Cookstown, Co Tyrone, BT80 9AX	4145	SANDHOLES
J & S Harkin, 21 Glenelly View, Plumbridge, Omagh, Co Tyrone	3552	J & S
Roger Hayes, 24a Castldamph Road, Plumbridge, Omagh, Co Tyrone	4281	CASTLEDAMPH
Hugh Henry, 20 Starbog Road, Kilwaughter, Larne, Co Antrim	4373	STARBOG
John Holden, 96 Brustin Brae Road, Larne, Co Antrim	3294	BLAIRMOUNT
M Hunter, 35 Lough View Road, Crumlin, Co Antrim, BT29 4RE	2014	ARDMORE
S Laverty, 118A Coolkeeran Road, Armoy, Ballymoney, Co Antrim	3100	ORRA VIEW
G & J Loughery, 116 Terrydoo Road, Limavady, Co Londonderry, BT49 0PF	4342	TEMAIN
R Loughridge, The Hill, 41 Friary Road, Armoy, Ballymoney	1691	ORRAVALE
D J Lyttle, 6 High Street, Tullyhommon, Kesh, Co Fermanagh, BT93 8BD	1896	AUCHAFOY
McCormick Bros, The Grove, 201 Torr Road, Cushendall, Ballymena, Co Antrim	2216	BRABLAGH
K J McGrath, Grouselodge, Pettigo, P.O. Co Donegal	3678	CAORAMOR
B & C McIlroy, 22 Ballyfore Road, Raloo, Larne, Co Antrim	2820	BALLYLAGAN
E McKeegan, 69 Glenane Road, Cushendall, Ballymena, Co Antrim	4235	GLENANE
M McKenna, 15 Brackaghreilly Road, Maghera, Derry,	4331	GLENSHANE
F McKenny, 49 Carnreagh Road, Castlewellan, Co Down	4105	DARRAGH
A & J Minnis, 48 Tullynagee Road, Comber	1463	MOSSVALE
A, J C & K Montgomery, 91 Drumcrow Road, Glenarm, Ballymena, Co Antrim	4146	OWENCLOUGHEY
Robt Mulligan, 21 Brague Road, Banbridge	1244	BRAGUE
B F Radcliffe, 10 Tullyconnaught Road, Corbet, Banbridge, Co Down	2083	UPTON
J V Rutledge, 33 Ednagee Road, Castlederg, Co Tyrone,	2331	EDNAGEE
W Smyth, 50 Terrydoo Road, Limavady, Co Londonderry	3975	TDO
G Walsh, 113 Drumnaquoile Road, Ballynahinch, BT24 8QS	3139	QUOILE
T Wray, 72A Slane Road, Carnlough, Co Antrim	3790	KNOCKSTACKEN
Michelle Wright, 61 Slane Road, Carnlough, Ballymena, Co Antrim,	3560	MULLAGHWEE
G A Wylie, 81 Castletown Road, Omagh, Co Tyrone,	2117	GORTANIGAN

CONDITIONS OF SALE

1. ALL SHEEP MUST BE PENNED BY 9.30a.m OTHERWISE THEY WILL NOT BE SOLD
2. The Sale will be conducted under the auspices of the Bluefaced Leicester Sheep Breeders Association.
3. The Exhibitor is the Breeder unless otherwise stated. Animals marked * are Two-shear or over. Flock Prefix in Capitals.
4. All sheep classified by the Association as 'Elite' approved or 'Elite Plus' and their progeny, are marked 'E' 'A' or 'E' plus accordingly.
5. All sheep must be sold in the order in which they are catalogued with the exception of the Champion Sheep, which can come anywhere in the exhibitor's run of sheep.
6. An Upset price of £100 will stand on all Sheep.
7. Whilst every care is taken in compiling this catalogue the Association does not accept responsibility for any errors which may occur.
8. Black wool must be declared by the Vendor at the time of sale. If not declared and found by the purchaser before it leaves the market, the sheep can be returned on that day.
9. Purchasers must satisfy themselves as to the correctness of any animal for which they bid, which will be their responsibility at the fall of the hammer.
10. Red spots marked on sheep by the inspector indicate that:
 - (a) A ram of any age is marginally incorrect in the testicles and the fault will be intimated to the Auctioneer by the Exhibitor and announced at the time of Sale and the ram warranted a stock getter by the Exhibitor.
 - (b) An adult sheep is considered to be of good conformation but marginal in the mouth and the fault will be intimated to the Auctioneer by the Exhibitor and announced at time of Sale.
 - (c) Sheep which are rejected will have the Association Logo cut from the tag, head marked and must be removed immediately from the Auction Mart.
11. Any complaint for cudspilling must be lodged with the Auctioneers before the sheep is removed from the Sale premises. The return of a sheep for cudspilling shall be a matter to be resolved between the Vendor and the Purchaser.
12. All disputes are a matter to be resolved between the vendor and purchaser. The Association does not guarantee the stock getting capabilities of any sheep.

THE CERTIFICATION OF THE SHEEP IDENTIFICATION AND THE NSP BOLUS IS THE SOLE RESPONSIBILITY OF THE VENDOR. THE ASSOCIATION WILL PROVIDE A SCANNER FOR USE BY VENDORS OR PURCHASERS TO VERIFY BOLUS NUMBERS ON THE DAY OF THE SALE.

VENDORS CONDITIONS OF WARRANTY:

- (i) If a ram is proved incapable of and ineffective at natural service, and is to be returned by the purchaser to the vendor, notice must be given as soon as possible by the purchaser to the vendor and the ram must be returned to the vendor no later than 5th December in reasonable condition.
 - (ii) No claim on the vendor to exceed the purchase price of the ram.
 - (iii) Any female should be guaranteed free of lamb at time of sale unless otherwise stated. Any animal to be returned should be returned by 5th January in reasonable condition.
 - (iv) No claim on the vendor to exceed the purchase price of the animal.
- Any member selling a ram from which semen has already been stored must advise the auctioneers and have it announced at time of Sale.

ALL SHEEP ARE THE PRODUCE OF REGISTERED FLOCKS AND CONSIGNED BY MEMBERS OF THE BLUEFACED LEICESTER SHEEP BREEDERS' ASSOCIATION.

Reference Sires used in the Sire Reference Scheme are marked "RS"

RAMS OF NSP GENOTYPE ARE MARKED WITH COLOURED DISCS
TYPE 1 – RED, TYPE 2 – BLUE AND TYPE 3 - GREEN

A Guide to the Performance Records for Bluefaced Leicester Sheep

Many factors influence the appearance of a ram - so the selection of superior stock 'by eye' alone can be misleading. Estimated Breeding Values (EBV's) and Breeding Indexes provide the only unbiased way of assessing breeding potential. These breeding values are produced by Signet using BLUP (Best Linear Unbiased Predictor) and are calculated from an animals' individual performance records as well as those of known relatives; taking into account known environmental influences (feeding, management, disease etc).

Estimated Breeding Values

EBV A brief explanation...

Estimated Breeding Values for commercially important traits		
Trait name	Description	Look for...
Eight week weight	The breeding potential for lamb growth rates from birth to 8 weeks of age.	High values for faster growth
Mature size	Choosing animals with high figures for this trait will increase mature size.	High values for larger mature size (and visa versa)
Litter size	Selection on high EBVs will increase the prolificacy of female replacements.	High values for more prolific ewes (and visa versa)
Maternal ability	This is the maternal component of the 8-week measurement. The higher this figure the better a ram's ewe lambs will perform as mothers (i.e. milking ability).	High values for milkier ewes
Scan Weight	The breeding potential for lamb growth rates to 21 weeks (age at scanning). The selection of breeding stock with high scan weight EBVs will result in animals with heavier carcasses at a constant fat class or leaner carcasses at a constant age.	High values for faster lamb growth rates
Muscle Depth	Choosing animals with high muscle depth EBVs will increase lamb muscularity and hence the lean meat content of the carcasse.	High values for more muscular lambs
Fat Depth	Negative values indicate animals with lower fat content which will produce leaner carcasses or which can be taken to higher weights without becoming over-fat.	Low values for leaner progeny (and visa versa)
Breeding Indexes highlight superior breeding stock for a specific breeding objective.		
Lamb Growth Index	A breeding index which is heavily influenced by the breeding values for lamb growth rate and muscling for Bluefaced Leicesters	

Breed Benchmark

Breeding values should be assessed relative to the Breed Benchmark. This table shows the breakdown of EBVs across the recorded Bluefaced Leicester breed.

Bluefaced Leicester Breed Benchmark 2011

	Bottom 5%	Bottom 10%	Bottom 25%	Average	Top 25%	Top 10%	Top 5%
Eight week weight EBV	-0.78	-0.54	-0.15	0.21	0.66	1.03	1.31
Mature size EBV	-1.91	-1.11	-0.07	1.00	1.97	2.82	3.4
Litter size EBV	-0.06	-0.04	-0.01	0.03	0.06	0.1	0.14
Maternal ability EBV	-0.46	-0.33	-0.13	0.05	0.28	0.46	0.65
Scan Weight EBV	-1.47	-0.92	-0.12	0.79	1.48	2.15	2.52
Muscle Depth EBV	-0.52	-0.29	0	0.44	0.83	1.24	1.48
Fat Depth EBV	0.6	0.52	0.36	0.14	-0.05	-0.23	-0.33
Lamb Growth Index	38	57	77	100	123	146	158

It is often desirable to select animals on the basis of more than one EBV. Breeding Indexes focus on specific breeding goals and combine the appropriate EBVs in to a single figure based on their relative economic value.

Genetic response	8 week weight EBV	Mature size EBV	Litter size EBV	Maternal ability EBV	Scan weight EBV	Muscle depth EBV	Fat depth EBV
Lamb Growth Index	0.52	2.32	0.02	0.43	2.26	0.50	0.00

†Gain in EBVs per generation when the selection intensity is equal to 1 standard deviation (approximately the best 38% of animals selected).

Further details will be available from the breeders at the time of Sale of recorded sheep as indicated in the catalogue.

AGED RAMS & SHEARLINGS

<i>Lot No.</i>	<i>Exhibitor</i>	<i>Reg No.</i>	<i>Index No. NSP Genotype</i>
1	S Duncan, HILLVALE (bred by RA Lund, WELLAN)	3419/C17	<i>Sire:</i> 281/B13 Carryhouse
2	(bred by Exhibitor)	1338/C4	<i>Sire:</i> 1458/Y8 Ty-Gwyn
3	(bred By R A Lund, WELLAN)	3419/C35	<i>Sire of Dam:</i> 2665/S4 Tower Brae
4	(bred by Exhibitor)	1338/C1	<i>Sire:</i> 2005/A1 Red Hill
5	(bred by E Helme, SALWICK)	755/C12	<i>Sire:</i> 1338/B1 Hillvale
6	(bred by Exhibitor)	1338/C3	<i>Sire of Dam:</i> 408/N25 Nunsleugh
7	(bred by R A Lund, WELLAN)	3419/C34	<i>Sire:</i> 2747/Y4 Todhills
8	(bred by Exhibitor)	1338/C5	<i>Sire:</i> 1338/B1 Hillvale
9		1338/C7	<i>Sire of Dam:</i> 1458/Y8 Ty-Gwyn
10	(bred By R W Emmott, WYTHOP HALL)	3788/C2	<i>Sire:</i> 2005/A1 Red Hill
11	J Adams & Sons, HOLMVIEW	1337/C21	<i>Sire:</i> 1458/Y8 Ty-Gwyn
12		1337/C1	<i>Sire of Dam:</i> 1691/R21 Orravale
13		1337/C3	<i>Sire:</i> 1458/Y7 Ty-Gwyn
14-15	G A Wylie, GORTANIGAN	2117/C6 - 2117/C7	<i>Sire of Dam:</i> 408/N25 Nunsleugh
16	J Brown & Sons, BEECHLODGE	1763/C3	<i>Sire:</i> 1080/A1 Shafthill
17	A & J Minnis, MOSSVALE	1463/C18	<i>Sire:</i> 3634/B21 The Fields
18	Hugh Henry, STARBOG (bred by C & D Hall, FIRTH)	1574/C3	<i>Sire of Dam:</i> 3790/Y10 Knockstacken
19	(bred by A Christie, THE FIELDS)	3634/C6	<i>Sire:</i> 4103/Z5 Hulloch Hill
20	(bred by J Harkin, J & S)	3552/C19	<i>Sire of Dam:</i> 1463/X11 Mossvale
21	(bred by J Harkin, J & S)	3552/C17	<i>Sire:</i> 4103/Z5 Hulloch Hill
22-24	S Laverty, ORRA VIEW	3100/C2 – 3100/C4	<i>Sire of Dam:</i> 1463/X11 Mossvale
25		3100/C1	<i>Sire:</i> 3417/Z1 Tullyvallen
26-29		3100/C5 – 3100/C8	<i>Sire of Dam:</i> 1244/X1 Brague
30		3100/C15	<i>Sire:</i> 1337/B3 Holmview
31-32		3100/C16 – 3100/C17	<i>Sire of Dam:</i> 1763/Y1 Beechclodge 'E+'
33	M Hunter, ARDMORE	2014/C1	<i>Sire:</i> 4146/B1 Owencloghey
34-35		2014/C3 - 2014/C4	<i>Sire:</i> 3380/B4 Tanhouse
36		2014/C5	<i>Sire of Dam:</i> 2944/V3 Bull & Cave
37-38		2014/C7 - 2014/C8	<i>Sire:</i> 1458/Z3 Ty-Gwyn
39		2014/C9	<i>Sire of Dam:</i> 3830/V1 Boatrig
40		2014/C10	<i>Sire:</i> 1691/A4 Orravale
41		2014/C11	<i>Sire of Dam:</i> 281/T33 Carryhouse
42		2014/C12	<i>Sire:</i> 1691/A4 Orravale
43		2014/C13	<i>Sire of Dam:</i> 281/T33 Carryhouse

<i>Lot No.</i>	<i>Exhibitor</i>	<i>Reg No.</i>	<i>Index No. NSP</i> <i>Genotype</i>
44		2014/C19	<i>Sire:</i> 1463/Z1 Mossvale <i>Sire of Dam:</i> 567/N1 Jerriestown 'E'
45		2014/C6	<i>Sire:</i> 3419/A29 Wellan <i>Sire of Dam:</i> 1244/V3 Brague
46	H & S Forsyth, BRYANTANG BLUES	4044/C3	<i>Sire:</i> 4267/ Blackthorn <i>Sire of Dam:</i> 4044/Y3 Bryantang Blues
47		4044/C5	<i>Sire:</i> 4145/A34 Sandholes <i>Sire of Dam:</i> 4044/A5 Bryantang Blues
48		4077/C10	<i>Sire:</i> 4267/ Blackthorn <i>Sire of Dam:</i> 4044/Z6 Bryantang Blues
49	T S Hammond, SANDHOLES	4145/C19	<i>Sire:</i> 233/B3 Parton 'E' <i>Sire of Dam:</i> 3756/W3 Plas-y-Ward 'E'
50	C Butler, GLENMAKEERAN	4266/C3	<i>Sire:</i> 1337/Y3 Holmview
51		4266/C5	<i>Sire:</i> 1337/Y3 Holmview
52	Kieran J McGrath, CAORAMOR	3678/C1	<i>Sire:</i> 281/Y34 Carryhouse <i>Sire of Dam:</i> 752/S12 Riddings
53		3678/C4	<i>Sire:</i> 2329/A2 Craigskean <i>Sire of Dam:</i> 1538/W25 Midlock Contraversy
54		3678/C15	<i>Sire:</i> 2329/A2 Craigskean <i>Sire of Dam:</i> 1538/W25 Midlock Contraversy
55		3678/C16	<i>Sire:</i> 752/A22 Riddings <i>Sire of Dam:</i> 2216/T2 Brablagh
*56	B F Radcliffe, UPTON (bred by J Adams, HOLMVIEW)	1337/B3	<i>Sire:</i> 4103/Z5 Hullock Hill <i>Sire of Dam:</i> 1463/X11 Mossvale
57	(bred by Exhibitor)	2083/C5	<i>Sire:</i> 1337/B3 Holmview <i>Sire of Dam:</i> 1463 Mossvale
58-59		2083/C6 - 2083/C7	<i>Sire:</i> 1763/Y1 Beechclodge 'E+' <i>Sire of Dam:</i> 467/W7 Bush on Lye 'E+'
60	M Elliott, BALLYKNOCK VIEW	3355/C3	<i>Sire:</i> 2690/A17 SP Dalpeddar <i>Sire of Dam:</i> 752/Y12 Riddings
61		3355/C1	<i>Sire:</i> 752/Y12 Riddings <i>Sire of Dam:</i> 2496/R10 Hawkswell
62-63		3355/C4 - 3355/C5	<i>Sire:</i> 2690/A17 SP Dalpeddar <i>Sire of Dam:</i> 752/Y12 Riddings
64		3355/C2	<i>Sire:</i> 752/Y12 Riddings <i>Sire of Dam:</i> 2496/R10 Hawkswell
65-67		3355/C6 - 3355/C8	<i>Sire:</i> 2690/A17 SP Dalpeddar <i>Sire of Dam:</i> 752/Y12 Riddings
68	R Loughridge, ORRAVALE	1691/C1	<i>Sire:</i> 1538/B41 Midlock <i>Sire of Dam:</i> 2800/T1 Airyolland
69	(bred by J & D Stenton, St Ravenscar)	2187/C18	<i>Sire:</i> 3777/A5 Oakhouse 'E+' <i>Sire of Dam:</i> 292/N38 Hundith 'E+'
70	(bred by Exhibitor)	1691/C2	<i>Sire:</i> 1538/B41 Midlock <i>Sire of Dam:</i> 2571/X8 Macqueston
71		1691/C20	<i>Sire:</i> 3320/B16 Tanhouse Farm <i>Sire of Dam:</i> 2051/W1 Hayshaw
72		1691/C3	<i>Sire:</i> 1538/B41 Midlock <i>Sire of Dam:</i> 1538/W25 Midlock Controversy
73		1691/C4	<i>Sire:</i> 1538/B41 Midlock <i>Sire of Dam:</i> 3749/W1 Forebrae
74	(bred by M James, DUHONW)	1411/C18	<i>Sire:</i> 1411/B1 Duhonw <i>Sire of Dam:</i> 2945/T14 Dalehead
75	(bred by Exhibitor)	1691/C5	<i>Sire:</i> 1538/B41 Midlock <i>Sire of Dam:</i> 752/X1 Riddings
76-77		1691/C6 – 1691/C7	<i>Sire:</i> 1538/B41 Midlock <i>Sire of Dam:</i> 2571/X8 Macqueston
78		1691/C8	<i>Sire:</i> 1538/B41 Midlock <i>Sire of Dam:</i> 2800/T1 Airyolland
79		1691/C21	<i>Sire:</i> 3320/B16 Tanhouse Farm <i>Sire of Dam:</i> 2051/W1 Hayshaw
80		1691/C22	<i>Sire:</i> 3320/B16 Tanhouse Farm <i>Sire of Dam:</i> 2747/X6 Todhills

<i>Lot No.</i>	<i>Exhibitor</i>	<i>Reg No.</i>	<i>Index No. NSP Genotype</i>
81		1691/C23	<i>Sire:</i> 3320/B16 Tanhouse Farm <i>Sire of Dam:</i> 2051/W1 Hayshaw
82		1691/C9	<i>Sire:</i> 1538/B41 Midlock <i>Sire of Dam:</i> 3749/W1 Forebrae
83		1691/C10	<i>Sire:</i> 1538/B41 Midlock <i>Sire of Dam:</i> 3419/V4 Wellan Drago
84		1691/C11	<i>Sire:</i> 1538/B41 Midlock <i>Sire of Dam:</i> 1386/Z16 Parkgatestone
85		1691/C24	<i>Sire:</i> 3320/B16 Tanhouse Farm <i>Sire of Dam:</i> 2747/X6 Todhills
86		1691/C25	<i>Sire:</i> 3320/B16 Tanhouse Farm <i>Sire of Dam:</i> 1386/Z16 Parkgatestone
87		1691/C26	<i>Sire:</i> 3320/B16 Tanhouse Farm <i>Sire of Dam:</i> 2571/X8 Macqueston
88		1691/C27	<i>Sire:</i> 3320/B16 Tanhouse Farm <i>Sire of Dam:</i> 2911/S5 Melmerby
89		1691/C28	<i>Sire:</i> 3320/B16 Tanhouse Farm <i>Sire of Dam:</i> 2800/T1 Airyolland
90		1691/C29	<i>Sire:</i> 3320/B16 Tanhouse Farm <i>Sire of Dam:</i> 1386/Z16 Parkgatestone
91	G Gault, CRAWFORDSLAND	1626/C7	<i>Sire:</i> 752/X1 Riddings
92		1626/C12	<i>Sire:</i> 4331/B6 Glenshane <i>Sire of Dam:</i> 1626/A1 Crawfordsland
93	T Wray, KNOCKSTACKEN (bred by R Mullican, BRAGUE)	1244/C6	<i>Sire:</i> 2216/A20 Brablagh
94	(bred by Exhibitor)	3790/C6	<i>Sire:</i> 2216/B1 Brablagh
95		3790/C1	<i>Sire:</i> 752/A26 Riddings
96		3790/C11	<i>Sire:</i> 2216/B1 Brablagh
97		3790/C9	<i>Sire:</i> 2216/B1 Brablagh
98		3790/C10	<i>Sire:</i> 2216/B1 Brablagh
99		3790/C5	<i>Sire:</i> 752/A26 Riddings
100		3790/C7	<i>Sire:</i> 2216/B1 Brablagh
101		3790/C4	<i>Sire:</i> 752/A26 Riddings
102		3790/C12	<i>Sire:</i> 752/A26 Riddings
103-105	D J Lyttle, AUGHAFOY	1896/C1 - 1896/C3	<i>Sire:</i> 2187/X3 St. Ravenscar
106-107		1896/C4 - 1896/C5	<i>Sire:</i> 2977/Z21 Tymawr
108	John Holden, BLAIRMOUNT	3294/C6	<i>Sire:</i> 1574/X2 Firth 'E+'
109		3294/C3	<i>Sire:</i> 1574/X2 Firth 'E+'
110		3294/C1	<i>Sire:</i> 1574/X2 Firth 'E+'
111		3294/C8	<i>Sire:</i> 1574/X2 Firth 'E+'
112		3294/C2	<i>Sire:</i> 1574/X2 Firth 'E+'
113		3294/C12	<i>Sire:</i> 1060/Y2 Brow Top
114-115		3294/C4 - 3294/C5	<i>Sire:</i> 1574/X2 Firth 'E+'
116		3294/C10	<i>Sire:</i> 1574/X2 Firth 'E+'
117		3294/C7	<i>Sire:</i> 1574/X2 Firth 'E+'
118		3294/C9	<i>Sire:</i> 1574/X2 Firth 'E+'
119		3294/C11	<i>Sire:</i> 1574/X2 Firth 'E+'
120		3294/C16	<i>Sire:</i> 309/W15 Morley
121	C A Coulter, CARRICK ROCK (bred by M James, DUHONW)	1411/C22	<i>Sire:</i> 2070/A5 Old Hemley 'E+' <i>Sire of Dam:</i> 3419/Z32 Wellan
122	(bred by Exhibitor)	3397/C8	<i>Sire:</i> 3397/Z10 Carrick Rock <i>Sire of Dam:</i> 2555/V15 Ashcleugh
123		3397/C6	<i>Sire:</i> 3397/Z10 Carrick Rock <i>Sire of Dam:</i> 2555/V15 Ashcleugh
124		3397/C20	<i>Sire:</i> 3397/Z10 Carrick Rock <i>Sire of Dam:</i> 2951/Z18 Kilstown
125		3397/C12	<i>Sire:</i> 3397/Z10 Carrick Rock <i>Sire of Dam:</i> 2951/Z18
126		3397/C10	<i>Sire:</i> 2951/Z18 Kilstown <i>Sire of Dam:</i> 3397/Z10 Carrick Rock
127		3397/C17	<i>Sire:</i> 3397/Z10 Carrick Rock <i>Sire of Dam:</i> 2951/Z18 Kilstown

<i>Lot No.</i>	<i>Exhibitor</i>	<i>Reg No.</i>	<i>Index No. NSP Genotype</i>
128		3397/C11	<i>Sire:</i> 3397/Z10 Carrick Rock <i>Sire of Dam:</i> 2951/Z18 Kilinstown
129		3397/C16	<i>Sire:</i> 3397/Z10 Carrick Rock <i>Sire of Dam:</i> 2951/Z18 Kilinstown
130		3397/C19	<i>Sire:</i> 3397/Z10 Carrick Rock <i>Sire of Dam:</i> 2951/Z18 Kilinstown
131		3397/C9	<i>Sire:</i> 2951/Z18 Kilinstown <i>Sire of Dam:</i> 3393/Z10 Carrick Rock
132		3397/C13	<i>Sire:</i> 3397/Z10 Carrick Rock <i>Sire of Dam:</i> 2555/V15 Ashcleugh
133		3397/C18	<i>Sire:</i> 3397/Z10 Carrick Rock <i>Sire of Dam:</i> 2555/V15 Ashcleugh
134-135		3397/C14 -3397/C15	<i>Sire:</i> 3397/Z10 Carrick Rock <i>Sire of Dam:</i> 2555/V15 Ashcleugh
136		3397/C21	<i>Sire:</i> 3397/Z10 Carrick Rock <i>Sire of Dam:</i> 2555/V15 Ashcleugh
*137	(bred by R Waugh, KILNSTOWN)	2951/Z18	<i>Sire:</i> 2951/P1 Kilinstown <i>Sire of Dam:</i> 2781/T6 Castle Hill
138-139	R Gault, CARNLEA	1622/C1 -1622/C2	<i>Sire:</i> 4342/B6 Temain <i>Sire of Dam:</i> 1622/X9 Carnlea
140	(bred by G Gault, Crawfordsland)	1626/C3	<i>Sire:</i> 752/X1 Riddings <i>Sire of Dam:</i> 3724/X10 Proctors
141	(bred by exhibitor)	1622/C3	<i>Sire:</i> 4342/B6 Temain <i>Sire of Dam:</i> 1622/X9 Carnlea
142	(bred by R & J Graham, Tullyvallen)	3417/C2	<i>Sire:</i> 3634/B18 The Fields <i>Sire of Dam:</i> 1888/X1 Greenaton 'E+'
143	G & J Loughery, TEMAIN		
144	(bred by McCormick Bros, BRABLUGH)	2216/C1	<i>Sire:</i> 2571/Z1 Maqueston
145	(bred by Exhibitor)	4342/C12	<i>Sire:</i> 1691/Y1 Orravale
146		4342/C11	<i>Sire:</i> 1691/Y1 Orravale
147		4342/C13	<i>Sire:</i> 1691/Y1 Orravale
148		4342/C30	<i>Sire:</i> 1691/Y1 Orravale
149		4342/C29	<i>Sire:</i> 1691/Y1 Orravale
150	(bred by Mr J Harkin, J & S)	4342/C31	<i>Sire:</i> 1691/Y1 Orravale
151	(bred by Exhibitor)	3552/C17	<i>Sire:</i> 1691/A4 Orravale
152	Robt Mulligan, BRAGUE	4342/C20	<i>Sire:</i> 3678/B7 Caoramor
153		1244/C5	<i>Sire:</i> 2216/A20 Brablagh
154	(bred by TS Hammond, SANDHOLES)	1244/C9	<i>Sire:</i> 2216/A20 Brablagh
155	(bred by M Wright, MULLAGHWEE)	4145/C4	<i>Sire:</i> 3634/B16 The Fields
		3560/C10	<i>Sire:</i> 3560/Z17 Mullaghwee
156	Alan Dickson, TREEVALE		
	(bred by J Brown & sons, Beechlogde)	1763/C2	<i>Sire:</i> 1337/B3 Holmview <i>Sire of Dam:</i> 1763/??? Beechlogde 'E+'
*157	Joseph V Rutledge, EDNAGEE		
	(bred by K J McCrath, CAORAMOR)	3678/B4	<i>Sire:</i> 281/Z11 Carry House <i>Sire of Dam:</i> 1337/S1 Holmview
158	A Christie, THE FIELDS	3634/C9	<i>Sire:</i> 1458/Z3 Ty-Gwyn <i>Sire of Dam:</i> 3830/V1 Boatrig
159-162		3634/C10 -3634/C13	<i>Sire:</i> 1458/Z3 Ty-Gwyn <i>Sire of Dam:</i> 3989/X16 Clennell
163		3634/C14	<i>Sire:</i> 1458/Z3 Ty-Gwyn <i>Sire of Dam:</i> 7/W3 Broomhills
164	(bred by T Crowe, LEARMORE)	1636/C6	<i>Sire:</i> 1458/Z3 Ty-Gwyn <i>Sire of Dam:</i> 281/T33 Carry House
165	F McKenny, DARRAGH	4105/C1	<i>Sire:</i> 1763/B4 Beechlogde <i>Sire of Dam:</i> 4105/Z9 Darragh
166		4105/C2	<i>Sire:</i> 1763/B4 Beechlogde <i>Sire of Dam:</i> 4105/A8 Darragh
167		4105/C3	<i>Sire:</i> 1763/B4 Beechlogde <i>Sire of Dam:</i> 4105/A7 Darragh
168	(bred by A, J, C & K Montgomery, OWENCLOUGHEY)	4146/C7	<i>Sire:</i> 1691/A1 Orravale

<i>Lot No.</i>	<i>Exhibitor</i>	<i>Reg No.</i>	<i>Index No. NSP</i> <i>Genotype</i>
169-171	W Smyth, TDO	3975/C1 - 3975/C3	<i>Sire:</i> 4145/B1 Sandholes
172	(bred by TS Hammond, SANDHOLES)	4145/C10	<i>Sire:</i> 4145/B1 Sandholes
173-174	(bred by Exhibitor)	3975/C4 - 3975/C5	<i>Sire:</i> 4145/B1 Sandholes
175	G Walsh, QUOILE		
	(bred by R Kerr, RANDOX)	3512/C8	<i>Sire:</i> 4206/Z8 Lenmore
176	(bred by C A Coulter, CARRICK ROCK)	3397/C7	<i>Sire:</i> 2951/Z18 Kilinstown
177-178	(bred by McCormick Bros BRABLAGH)	2216/C8 - 2216/C9	<i>Sire:</i> 2571/Z1 Macqueston
179	(bred by McCormick Bros BRABLAGH)	2216/C20	<i>Sire:</i> 3634/B2 The Fields
180-181	(bred by R & J Graham, TULLYVALLEN)	3417/C7 - 3417/C8	<i>Sire:</i> 3634/B18 The Fields
182	Roger Hayes, CASTLEDAMPH	4281/C1	<i>Sire:</i> 1691/A4 Orravale <i>Sire of Dam:</i> 281/T33 Carryhouse
183		4281/C2	<i>Sire:</i> 1691/A4 Orravale <i>Sire of Dam:</i> 1636/R8 Learmore
184		4281/C5	<i>Sire:</i> 1691/A4 Orravale <i>Sire of Dam:</i> 281/T33 Carryhouse
185		4281/C6	<i>Sire:</i> 1691/A4 Orravale <i>Sire of Dam:</i> 1636/X1 Learmore
186		4281/C7	<i>Sire:</i> 1691/A4 Orravale <i>Sire of Dam:</i> 1636/R8 Learmore
187		4281/C8	<i>Sire:</i> 1691/A4 Orravale <i>Sire of Dam:</i> 281/T33 Carryhouse
188		4281/C9	<i>Sire:</i> 1691/A4 Orravale <i>Sire of Dam:</i> 1763/X1 Beechlodge
189-190	McCormick Bros, BRABLAGH	2216/C28 - 2216/C29	<i>Sire:</i> 4235/Z1 Glenane <i>Sire of Dam:</i> 1574/X3 Firth 'E'
191		2216/C11	<i>Sire:</i> 2571/Z1 Macqueston 'E' <i>Sire of Dam:</i> 1574/X3 Firth 'E'
192-193		2216/C12 - 2216/C13	<i>Sire:</i> 2571/Z1 Macqueston 'E' <i>Sire of Dam:</i> 1574/X3 Firth 'E'
194		2216/C30	<i>Sire:</i> 4235/Z1 Glenane <i>Sire of Dam:</i> 1574/X3 Firth 'E'
195		2216/C10	<i>Sire:</i> 2571/Z1 Macqueston 'E' <i>Sire of Dam:</i> 1574/X3 Firth 'E'
196	Michelle Wright, MULLAGHWEE	3560/C1	<i>Sire:</i> 4235/B3 Glenane <i>Sire of Dam:</i> 3397/Z10 Carrick Rock
197		3560/C4	<i>Sire:</i> 4342/B4 Temain <i>Sire of Dam:</i> 896/R1 Fellview
198		3560/C7	<i>Sire:</i> 4342/B4 Temain <i>Sire of Dam:</i> 1338/V1 Hillvale

RAM LAMBS

199-200	J & S Harkin, J & S	3552/D1 - 3552/D2	<i>Sire:</i> 1691/A4 Orravale <i>Sire of Dam:</i> 281/T33 Carryhouse
201-202		3552/D3 - 3552/D4	<i>Sire:</i> 1691/A4 Orravale <i>Sire of Dam:</i> 281/T33 Carryhouse
203		3552/D5	<i>Sire:</i> 4342/C9 Temain <i>Sire of Dam:</i> 1691/A4 Orravale
204-205	A Christie, THE FIELDS	3634/D1 - 3634/D2	<i>Sire:</i> 2187/X3 St Ravenscar <i>Sire of Dam:</i> 2747/V10 Todhills
206		3634/D3	<i>Sire:</i> 2187/X3 St Ravenscar <i>Sire of Dam:</i> 3830/V1 Boatrig
207-209		3634/D4 - 3634/D6	<i>Sire:</i> 1458/Z3 Ty-Gwyn <i>Sire of Dam:</i> 3989/X16 Clennell
210	A, J C & K Montgomery, OWENCLOGHEY	4146/D1	<i>Sire:</i> 1691/A1 Orravale <i>Sire of Dam:</i> 1000/X2 Ewanston E+
211-213	Timothy Wray, KNOCKSTACKEN	3790/D1 - 3790/D3	<i>Sire:</i> 1691/B10 Orravale
214	B F Radcliffe, UPTON	2083/D1	<i>Sire:</i> <i>Sire of Dam:</i> 1463 Mossvale
215		2083/D2	<i>Sire:</i> <i>Sire of Dam:</i> 1763/Y1 Beechlodge 'E+'

<i>Lot No.</i>	<i>Exhibitor</i>	<i>Reg No.</i>	<i>Index No. NSP Genotype</i>
216	S J Duncan, HILLVALE	1338/D1	<i>Sire:</i> 2070/A5 Old Hemley <i>Sire of Dam:</i> 1080/S15 Shafthill
217		1338/D2	<i>Sire:</i> 1080/W1 Shafthill <i>Sire of Dam:</i> 1338/V1 Hillvale
218	J Adams & Sons, HOLMVIEW	1337/D1	<i>Sire:</i> 1691/B10 Orravale <i>Sire of Dam:</i> 1463/X11 Mossvale
219-220		1337/D2 – 1337/D3	<i>Sire:</i> 1691/B10 Orravale <i>Sire of Dam:</i> 4103/Z5 Hulloch Hill
221		1337/D4	<i>Sire:</i> 1691/B10 Orravale <i>Sire of Dam:</i> 3790/Y10 Knockstacken
222		1337/D5	<i>Sire:</i> 1691/B10 Orravale <i>Sire of Dam:</i> 1463/X11 Mossvale
223		1337/D6	<i>Sire:</i> 1691/B10 Orravale <i>Sire of Dam:</i> 4103/Z5 Hulloch Hill
224		1337/D7	<i>Sire:</i> 1691/B10 Orravale <i>Sire of Dam:</i> 1463/X11 Mossvale
225		1337/D8	<i>Sire:</i> 1691/B10 Orravale <i>Sire of Dam:</i> 3790/Y10 Knockstacken
226-227		1337/D9 – 1337/D10	<i>Sire:</i> 1691/B10 Orravale <i>Sire of Dam:</i> 4103/Z5 Hulloch Hill
228-233	J Brown & Sons, BEECHLODGE	1763/D1 - 1763/D6	<i>Sire:</i> 1337/B3 Holmview <i>Sire of Dam:</i> 1376/Y1 Beechledge 'E+' <i>Sire:</i> 4145/C4 Sandholes
234-236	S A P Cowan, TULLYEAR	3482/D1 - 3482/D3	<i>Sire of Dam:</i> 2216/A20 Brablagh <i>Sire:</i> 1458/Z3 Ty-Gwyn <i>Sire of Dam:</i> 4145/A17 Sandholes
237	R & J Graham, TULLYVALLEN	3417/D1	<i>Sire:</i> 1458/Z3 Ty-Gwyn <i>Sire of Dam:</i> 4145/A17 Sandholes
238-239		3417/D2 - 3417/D3	<i>Sire:</i> 1458/Z3 Ty-Gwyn <i>Sire of Dam:</i> 1888/X1 Greenaton
240		3417/D5	<i>Sire:</i> 3397/C9 Carrick Rock <i>Sire of Dam:</i> 3139/A2 Quoilé
241		3417/D10	<i>Sire:</i> 4145/C6 Sandholes <i>Sire of Dam:</i> 3790/Z4 Knockstacken
242	Michelle Wright, MULLAGHWEE	3560/D1	<i>Sire:</i> 4235/B3 Glenane <i>Sire of Dam:</i> 352/W4 Whitchester
243		3560/D5	<i>Sire:</i> 3560/C1 Mullaghwee <i>Sire of Dam:</i> 352/W4 Whitchester
244		3560/D6	<i>Sire:</i> 3560/C1 Mullaghwee <i>Sire of Dam:</i> 1338/V1 Hillvale
245		3560/D7	<i>Sire:</i> 3560/C1 Mullaghwee <i>Sire of Dam:</i> 352/W4 Whitchester
246-249	M/s McCormick Bros, BRABLAGH	2216/D1 - 2216/D4	<i>Sire:</i> 4331/C1 Glenshane <i>Sire of Dam:</i> 1574/X3 Firth 'E' <i>Sire:</i> 4367/C1 Drummuck <i>Sire of Dam:</i> 1574/X3 Firth 'E'
250-251		2216/D23 -2216/D24	<i>Sire:</i> 752/A26 Riddings <i>Sire of Dam:</i> 1574/X3 Firth
252-255		2216/D12 -2216/D15	<i>Sire:</i> 4331/C1 Glenshane <i>Sire of Dam:</i> 1574/X3 Firth 'E'
256-259		2216/D5 - 2216/D8	<i>Sire:</i> 4328/A5 Creevamoy <i>Sire of Dam:</i> 4235/A1 Glenane Magners
260	E McKeegan, GLENANE	4235/D2	<i>Sire:</i> 4235/C3 Glenane <i>Sire of Dam:</i> 2070/Z31 Old Hemley
261		4235/D3	<i>Sire:</i> 1691/B6 Orravale <i>Sire of Dam:</i> 980/M8 Hewgill
262		4235/D4	<i>Sire:</i> : 4328/A5 Creevamoy <i>Sire of Dam:</i> 4235/A1 Glenane Magners
263		4235/D5	<i>Sire:</i> 2329/B7 Craigskean <i>Sire of Dam:</i> 4235/A1 Glenane Magners
264		4235/D6	<i>Sire:</i> 1574/Z1 Firth <i>Sire of Dam:</i> 2944/V3 Bull & Cave
265	M McKenna, GLENSHANE	4331/D1	<i>Sire:</i> 1574/Z1 Firth <i>Sire of Dam:</i> 1621/X9 Drevá
266		4331/D2	

<i>Lot No.</i>	<i>Exhibitor</i>	<i>Reg No.</i>	<i>Index No. NSP</i> <i>Genotype</i>
267		4331/D3	<i>Sire:</i> 980/N34 Hewgill <i>Sire of Dam:</i> 3397/Z10 Carrick Rock
268-269		4331/D4 – 4331/D5	<i>Sire:</i> 3397/Z10 Carrick Rock <i>Sire of Dam:</i> 1538/W25 Midlock Controversy
270	A & J Minnis, MOSSVALE	1463/D11	<i>Sire:</i> 3397/A1 Carrick Rock <i>Sire of Dam:</i> 1463/B20 Mossvale
271		1463/D12	<i>Sire:</i> 3397/A1 Carrick Rock <i>Sire of Dam:</i> 1463/B13 Mossvale
272		1463/D13	<i>Sire:</i> 3397/A1 Carrick Rock <i>Sire of Dam:</i> 1463/B14 Mossvale
273-277	T S Hammond, SANDHOLES	4145/D1 - 4145/D5	<i>Sire:</i> 3920/C8 Tievebuaile Farm <i>Sire of Dam:</i> 1463/X25 Mossvale
278		4145/D6	<i>Sire:</i> 3920/C8 Tievebuaile Farm <i>Sire of Dam:</i> 3790/X1 Knockstacken
279		4145/D7	<i>Sire:</i> 3920/C8 Tievebuaile Farm <i>Sire of Dam:</i> 3790/A2 Knockstacken
280-281		4145/D8 -4145/D9	<i>Sire:</i> 3920/C8 Tievebuaile Farm <i>Sire of Dam:</i> 1463/X25 Mossvale
282-285	C A Coulter, CARRICK ROCK	3397/D1 - 3397/D4	<i>Sire:</i> 4331/B1 Glenshane <i>Sire of Dam:</i> 3397/Z10 Carrick Road
286	J Blaney, TIEVEBUAILE FARM	3920/D1	<i>Sire:</i> 1538/V25 Midlock <i>Sire of Dam:</i> 2329/A2 Craigskean
287-288		3920/D2 - 3920/D3	<i>Sire:</i> 1691/B6 Orravale <i>Sire of Dam:</i> 2571/Z7 Macqueston
289		3920/D4	<i>Sire:</i> 1691/B8 Orravale <i>Sire of Dam:</i> 1538/W25 Midlock Controversy
290		3920/D5	<i>Sire:</i> 1691/B8 Orravale <i>Sire of Dam:</i> 1691/Q9 Orravale
291-294	S Lavery, ORRA VIEW	3100/D1 - 3100/D4	<i>Sire:</i> 936/K1 Lunesdale <i>Sire of Dam:</i> 1080/S25 Shafthill
295	B & C McIlroy, BALLYLAGAN	2820/D1	<i>Sire:</i> 1622/B1 Carnlea <i>Sire of Dam:</i> 3970/Z2 Knockstacken
296-297	G Gault, CRAWFORDSLAND	1626/D1- 1626/D2	<i>Sire:</i> 2392/A2 Craigskean <i>Sire of Dam:</i> 1172/X6 Scrogton
298-299		1626/D3 – 1626/D4	<i>Sire:</i> 1626/C7 Crawfordsland <i>Sire of Dam:</i> 1626/A1 Crawfordsland
300	G & J Loughery, TEMAIN	4342/D1	<i>Sire:</i> 1691/Y1 Orravale <i>Sire:</i> 4342/C1 Temain
301		4342/D2	<i>Sire of Dam:</i> 2944/V3 Bull & Cave <i>Sire:</i> 1691/Y1 Orravale
302		4342/D2	<i>Sire:</i> 2070/A5 Old Hemley <i>Sire of Dam:</i> 1538/W25 Midlock Controversy
303-304		4342/D12 -4342/D13	<i>Sire:</i> 281/Z11 Carryhouse <i>Sire of Dam:</i> 752/W11 Riddings
305	K J McGrath, CAORAMOR	3678/D1	<i>Sire:</i> 281/Z11 Carryhouse <i>Sire of Dam:</i> 752/S12 Riddings
306		3678/D2	<i>Sire:</i> 281/Z11 Carryhouse <i>Sire of Dam:</i> 2944/V3 Bull & Cave
307		3678/D3	<i>Sire:</i> 281/Z11 Carryhouse <i>Sire of Dam:</i> 2944/V3 Bull & Cave

FEMALES

308-312	Brian Radcliffe, UPTON	2083/D11 -2083/D15	<i>Sire:</i> 1337/B3 Holmview <i>Sire of Dam:</i> 1763/Y1 Beechclodge 'E+' <i>Sire:</i> 1338/A1 Hillvale
*313	S J Duncan, HILLVALE	1338/B22	<i>Sire of Dam:</i> 292/N38 Hundith
314	A, J C & K Montgomery, OWENCLOUGHEY	4146/D2	<i>Sire:</i> 1691/A1 Orravale <i>Sire of Dam:</i> 1896/Z2 Aughafoy E+
315		4146/D6	<i>Sire:</i> 4235/A2 Glenane Bulmers <i>Sire of Dam:</i> 1691/Y6 Orravale

<i>Lot No.</i>	<i>Exhibitor</i>	<i>Reg No.</i>	<i>Index No. NSP Genotype</i>
316	E McKeegan, GLENANE	4235/D12	<i>Sire:</i> 1691/B6 Orravale
317-318		4235/D14 – 4235/D15	<i>Sire of Dam:</i> 980/M8 Hewgill <i>Sire:</i> 4235/A2 Glenane Bulmers
319	J Adams & Sons, HOLMVIEW	1337/D22	<i>Sire of Dam:</i> 980/Y40 Hewgill <i>Sire:</i> 1691/B10 Orravale
320	J Blaney, TIEVEBUAILE FARM	3920/D11	<i>Sire of Dam:</i> 4103/Z5 Hulloch Hill <i>Sire:</i> 2329/2 Craigskean
321		3920/D12	<i>Sire of Dam:</i> 1538/A14 Midlock <i>Sire:</i> 1691/B6 Orravale
322		3920/D13	<i>Sire of Dam:</i> 2571/B7 Macqueston <i>Sire:</i> 1538/W25 Midlock Controversy
323		3920/D14	<i>Sire of Dam:</i> 2329/A2 Craigskean <i>Sire:</i> 1691/B8 Orravale
324		3920/D15	<i>Sire of Dam:</i> 1538/Z1 Midlock <i>Sire:</i> 1691/B8 Orravale
325		3920/D16	<i>Sire of Dam:</i> 1691/Q9 Orravale <i>Sire:</i> 1691/B8 Orravale
326		3920/D17	<i>Sire of Dam:</i> 1939/V27 Hazelwood <i>Sire:</i> 1691/B8 Orravale
327	J & I Brown, BEECHLODGE	1763/C6	<i>Sire of Dam:</i> 3397/Z10 Carrick Rock <i>Sire:</i> 1337/B3 Holmview
328		1763/C10	<i>Sire of Dam:</i> 1763/Y1 Beechclodge 'E+' <i>Sire:</i> 1337/B3 Holmview <i>Sire of Dam:</i> 1763/Y1 Beechclodge 'E+'

	1st	2nd	3rd	4th
CLASS 1				
CLASS 2				
CLASS 3				
CLASS 4				
CLASS 5				
CLASS 6				
CLASS 7				
CLASS 8				

MALE CHAMPION	
FEMALE CHAMPION	
CHAMPION	
RESERVE CHAMPION	

Bluefaced Leicesters
50th Anniversary
2012
50 Years Young

Come and join in the celebrations on

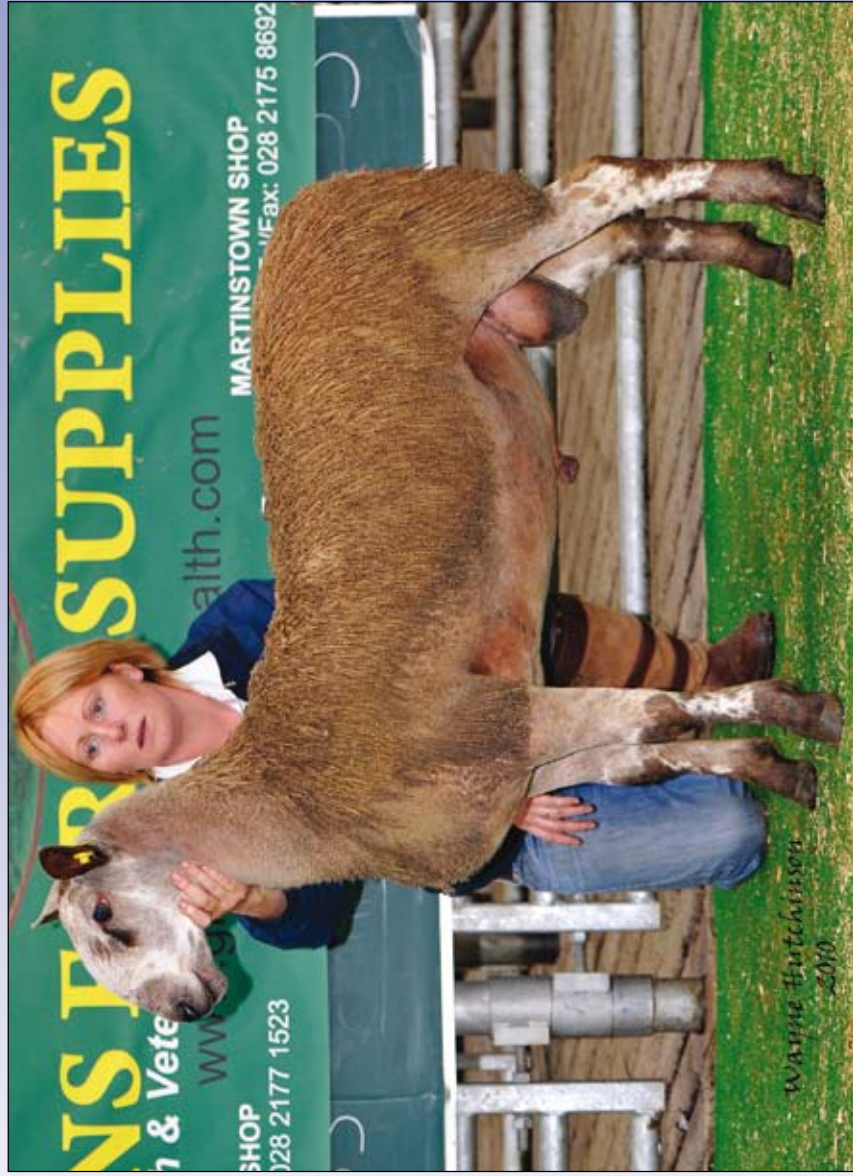
**SATURDAY 11TH &
SUNDAY 12TH AUGUST 2012**

A weekend of events, to include a champagne reception followed by a dinner and dance at The Shap Wells Hotel, Penrith, Cumbria

With
Guest Speaker
Adam Henson

Full details of this event
will be in the 2011
Autumn Review magazine.





4342/C001 BALLYMENA TOP PRICE 2010

Bred & Exhibited by Messrs G & J Loughery, TEMAIN

Purchased for £6,300.00 by J Mills, 43 Starbug Road and Messrs G & J Loughery, TEMAIN

Sire 1691/Y001 ORRAVALE

*Wayne Hutchinson
2010*