



BLUEFACED LEICESTER SHEEP BREEDERS' ASSOCIATION

HEXHAM SALE

Monday 26th September 2011



Wayne H
20

50/B001 HEXHAM CHAMPION 2010

Bred & Exhibited by Messrs T L Forster & Sons, LOWES FELL

Purchased for £1,400.00 by Messrs G P Williams & Co, ELIAN

Sire 468/A005 WALTON

*The Future's Bright,
the Future's Blue*

ROBSON ANIMAL HEALTH

**Wolsingham in Weardale
01388 527963**

**SPONSORS OF HEXHAM
BLUEFACED LEICESTER SHOW
AND SALE**

**Also at Hexham Auction Mart
01434 602275**

**SPECIALIST SUPPLIERS OF
ANIMAL HEALTH PRODUCTS**



**BLUEFACED LEICESTER SHEEP
BREEDERS' ASSOCIATION**



**FORTY-SEVENTH ANNUAL
SHOW AND SALE**

**113 Registered Bluefaced Leicesters
99 Aged & Shearling Rams and 14 Ram Lambs**

**Monday 26th September, 2011
in Auction Mart, Hexham,
Northumberland**

by Hexham & Northern Marts Ltd.

Judging 9.30 a.m.

Sale commences 11.00 a.m.

AWARDS:

Aged Ram: 1st £15, 2nd £10, 3rd £5.

Shearling Ram: 1st £15, 2nd £10, 3rd £5.

Ewe or Gimmer Shearling: 1st £15, 2nd £10, 3rd £5.

Ewe Lamb: 1st £15, 2nd £10, 3rd £5.

Ram Lamb Awards kindly sponsored by

Robson Animal Health

1st £25, 2nd £15, 3rd £5, 4th £5

Percy Telfer Memorial Trophy for Best Shearling Ram

W. H. Davison Silver Challenge Cup for Best Ram Lamb

T. W. Ridley Memorial Trophy for Best Female

Hexham Auction Mart Cup for Overall Champion

Overall Champion £30

Reserve Overall Champion £20

JUDGE: Mr. J. Stott, Laund Farm, Chipping, Preston, Lancashire

CHIEF STEWARD: Arthur Yeats

STEWARDS: H. Brown, D. Raine

ONLY CATALOGUED SHEEP WILL BE ALLOWED IN THE SALE

SECRETARY: Helen Carr-Smith, Riverside View, Warwick Road, Carlisle. CA1 2BS.

Tel: 01228 598022 Fax: 01228 598021

Printed by Solway Offset *the* Printers, 11 Catherinefield Ind. Estate, Heathhall, Dumfries.

EXHIBITOR	PREFIX	FLOCK No.
R D Archer & Son, Carry House, Wark, Hexham, Northumberland	CARRY HOUSE	281
WR & J Barron, The Deans Farm, Muggleswick, Consett, Co Durham	HEXHAMSHIRE	1068
J Carr & Co, Camphill, Barrasford, Hexham, NE48 4AZ	HOMILTON	620
R L Carter, Hinedon Cottage, Woodland, Bishop Auckland, Co Durham, DL13 5RT	LINDOWAN	3464
S J Charlton, The Shield, Kirkwhelpington, Newcastle upon Tyne, NE19 2SX	THE SHIELD	1641
Crow Hall Farms Ltd, C/O Farm Manager Mr P Teasdale, Crow Hall, Bardon Mill, Hexham, Northumberland	CROW HALL	4404
G Dixon, Alwinton Farm, Harbottle, Morpeth	ALWINTON	3764
J Elliot, 1 Branton East Side, Powburn, Alnwick, Northumberland	BRANTON	2819
R M English, Brownsleazes, Wark, Hexham, Northumberland, NE48 3BQ	BROWNSLEAZES	800
T L Forster & Son, Lowes Fell, Lowgate, Hexham, NE46 2NR	LOWES FELL	50
M/s J Herdman, Edlingham Newtown, Alnwick, Northumberland, NE66 2BY	EDLINGHAM	175
T Iley, Shirlaw Hope, Longframlington, Morpeth,	SHIRLAW	3254
Mr IM & Mrs HB Jackson, The Sycamores, Boothferry Road, Howden, Nr Goole, East Yorkshire	ACER	4361
Lilburn Farming Partnership, North Middleton, Wooler, Northumberland	ROSEDEN	4260
D J & J E Lumley, Granary Steps, Slaley, Hexham, Northumberland	NOOKTON	1106
D Milburn, 3 Low Farnham, Sharperton, Morpeth	FARNHAM	4321
J A Murray, Glebe Farm, West Butsfield, Tow Law, Bishop Auckland, Co Durham	WEST BUTSFIELD	389
J R F Pattinson, Hot Bank, Bardon Mill, Hexham, Northumberland, NE47 7AH	HOTTBANK	1877
M W & C M Ridley, Shitlington Hall, Wark, hexham, Northumberland, NE48 3QD	SHITLINGTON	2857
T F C Robinson & Son, Bog Hall, Capheaton, Newcastle upon Tyne, NE19 2DL	BOG HALL	410
M J Snaith, Clennell, Harbottle, Morpeth,	CLENNELL	3989
Watson Brothers, West Hinedon Farm, Woodland, Bishop Auckland, Co Durham	HINEDON	4167

CONDITIONS OF SALE

1. ALL SHEEP MUST BE PENNED BY 9.30a.m OTHERWISE THEY WILL NOT BE SOLD
2. The Sale will be conducted under the auspices of the Bluefaced Leicester Sheep Breeders Association.
3. The Exhibitor is the Breeder unless otherwise stated. Animals marked * are Two-shear or over. Flock Prefix in Capitals.
4. All sheep classified by the Association as 'Elite' approved or 'Elite Plus' and their progeny, are marked 'E' 'A' or 'E' plus accordingly.
5. All sheep must be sold in the order in which they are catalogued with the exception of the Champion Sheep, which can come anywhere in the exhibitor's run of sheep.
6. An Upset price of £100 will stand on all Sheep.
7. Whilst every care is taken in compiling this catalogue the Association does not accept responsibility for any errors which may occur.
8. Black wool must be declared by the Vendor at the time of sale. If not declared and found by the purchaser before it leaves the market, the sheep can be returned on that day.
9. Purchasers must satisfy themselves as to the correctness of any animal for which they bid, which will be their responsibility at the fall of the hammer.
10. Red spots marked on sheep by the inspector indicate that:
 - (a) A ram of any age is marginally incorrect in the testicles and the fault will be intimated to the Auctioneer by the Exhibitor and announced at the time of Sale and the ram warranted a stock getter by the Exhibitor.
 - (b) An adult sheep is considered to be of good conformation but marginal in the mouth and the fault will be intimated to the Auctioneer by the Exhibitor and announced at time of Sale.
 - (c) Sheep which are rejected will have the Association Logo cut from the tag, head marked and must be removed immediately from the Auction Mart.
11. Any complaint for cudspilling must be lodged with the Auctioneers before the sheep is removed from the Sale premises. The return of a sheep for cudspilling shall be a matter to be resolved between the Vendor and the Purchaser.
12. All disputes are a matter to be resolved between the vendor and purchaser. The Association does not guarantee the stock getting capabilities of any sheep.

THE CERTIFICATION OF THE SHEEP IDENTIFICATION AND THE NSP BOLUS IS THE SOLE RESPONSIBILITY OF THE VENDOR. THE ASSOCIATION WILL PROVIDE A SCANNER FOR USE BY VENDORS OR PURCHASERS TO VERIFY BOLUS NUMBERS ON THE DAY OF THE SALE.

VENDORS CONDITIONS OF WARRANTY:

- (i) If a ram is proved incapable of and ineffective at natural service, and is to be returned by the purchaser to the vendor, notice must be given as soon as possible by the purchaser to the vendor and the ram must be returned to the vendor no later than 5th December in reasonable condition.
 - (ii) No claim on the vendor to exceed the purchase price of the ram.
 - (iii) Any female should be guaranteed free of lamb at time of sale unless otherwise stated. Any animal to be returned should be returned by 5th January in reasonable condition.
 - (iv) No claim on the vendor to exceed the purchase price of the animal.
- Any member selling a ram from which semen has already been stored must advise the auctioneers and have it announced at time of Sale.

ALL SHEEP ARE THE PRODUCE OF REGISTERED FLOCKS AND CONSIGNED BY MEMBERS OF THE BLUEFACED LEICESTER SHEEP BREEDERS' ASSOCIATION.

Reference Sires used in the Sire Reference Scheme are marked "RS"

RAMS OF NSP GENOTYPE ARE MARKED WITH COLOURED DISCS
TYPE 1 – RED, TYPE 2 – BLUE AND TYPE 3 - GREEN

A Guide to the Performance Records for Bluefaced Leicester Sheep

Many factors influence the appearance of a ram - so the selection of superior stock 'by eye' alone can be misleading. Estimated Breeding Values (EBV's) and Breeding Indexes provide the only unbiased way of assessing breeding potential. These breeding values are produced by Signet using BLUP (Best Linear Unbiased Predictor) and are calculated from an animals' individual performance records as well as those of known relatives; taking into account known environmental influences (feeding, management, disease etc).

Estimated Breeding Values

EBV A brief explanation...

Estimated Breeding Values for commercially important traits		
Trait name	Description	Look for...
Eight week weight	The breeding potential for lamb growth rates from birth to 8 weeks of age.	High values for faster growth
Mature size	Choosing animals with high figures for this trait will increase mature size.	High values for larger mature size (and visa versa)
Litter size	Selection on high EBVs will increase the prolificacy of female replacements.	High values for more prolific ewes (and visa versa)
Maternal ability	This is the maternal component of the 8-week measurement. The higher this figure the better a ram's ewe lambs will perform as mothers (i.e. milking ability).	High values for milkier ewes
Scan Weight	The breeding potential for lamb growth rates to 21 weeks (age at scanning). The selection of breeding stock with high scan weight EBVs will result in animals with heavier carcasses at a constant fat class or leaner carcasses at a constant age.	High values for faster lamb growth rates
Muscle Depth	Choosing animals with high muscle depth EBVs will increase lamb muscularity and hence the lean meat content of the carcase.	High values for more muscular lambs
Fat Depth	Negative values indicate animals with lower fat content which will produce leaner carcasses or which can be taken to higher weights without becoming over-fat.	Low values for leaner progeny (and visa versa)
Breeding Indexes highlight superior breeding stock for a specific breeding objective.		
Lamb Growth Index	A breeding index which is heavily influenced by the breeding values for lamb growth rate and muscling for Bluefaced Leicesters	

Breed Benchmark

Breeding values should be assessed relative to the Breed Benchmark. This table shows the breakdown of EBVs across the recorded Bluefaced Leicester breed.

Bluefaced Leicester Breed Benchmark 2011

	Bottom 5%	Bottom 10%	Bottom 25%	Average	Top 25%	Top 10%	Top 5%
Eight week weight EBV	-0.78	-0.54	-0.15	0.21	0.66	1.03	1.31
Mature size EBV	-1.91	-1.11	-0.07	1.00	1.97	2.82	3.4
Litter size EBV	-0.06	-0.04	-0.01	0.03	0.06	0.1	0.14
Maternal ability EBV	-0.46	-0.33	-0.13	0.05	0.28	0.46	0.65
Scan Weight EBV	-1.47	-0.92	-0.12	0.79	1.48	2.15	2.52
Muscle Depth EBV	-0.52	-0.29	0	0.44	0.83	1.24	1.48
Fat Depth EBV	0.6	0.52	0.36	0.14	-0.05	-0.23	-0.33
Lamb Growth Index	38	57	77	100	123	146	158

It is often desirable to select animals on the basis of more than one EBV. Breeding Indexes focus on specific breeding goals and combine the appropriate EBVs in to a single figure based on their relative economic value.

Genetic response	8 week weight EBV	Mature size EBV	Litter size EBV	Maternal ability EBV	Scan weight EBV	Muscle depth EBV	Fat depth EBV
Lamb Growth Index	0.52	2.32	0.02	0.43	2.26	0.50	0.00

†Gain in EBVs per generation when the selection intensity is equal to 1 standard deviation (approximately the best 38% of animals selected).

Further details will be available from the breeders at the time of Sale of recorded sheep as indicated in the catalogue.

AGED RAMS & SHEARLINGS

<i>Lot No.</i>	<i>Exhibitor</i>	<i>Reg No.</i>	<i>Index No.</i>	<i>NSP Genotype</i>
1	Watson Brothers, HINEDON	4167/C1		<i>Sire:</i> 963/P5 Lunesdale <i>Sire of Dam:</i> 509/W1 Mayland
2		4167/C3		<i>Sire:</i> 2041/B5 Ilkley Moor <i>Sire of Dam:</i> 509/W1 Mayland
3	(bred by W & C W Dent, GREENRIGGS)	1503/C9		<i>Sire:</i> 399/A28 Laund <i>Sire of Dam:</i> 830/L1 Snab Green
4	D Milburn, FARNHAM	4321/C1		<i>Sire:</i> 3764/A16 Alwinton <i>Sire of Dam:</i> 281/X21 Carry House
5-7		4321/C2 – 4321/C4		<i>Sire:</i> 3764/A16 Alwinton
8		4321/C5		<i>Sire:</i> 838/Y5 West Raw
9-12	W R & J Barron, HEXHAMSHIRE	1068/C1 - 1068/C4		<i>Sire:</i> 234/Y1 Ashes <i>Sire of Dam:</i> 1542/X14 Pigot
13	Mr I M & Mrs H B Jackson, ACER Performance Recorded Flock	4361/C1	99	<i>Sire:</i> 1484/A10 Pickering <i>Sire of Dam:</i> 755/T4 Salwick
14		4361/C2	84	<i>Sire:</i> 1484/A10 Pickering <i>Sire of Dam:</i> 755/T4 Salwick
15		4361/C3	101	<i>Sire:</i> 1484/A10 Pickering <i>Sire of Dam:</i> 119/W19 Cocklaw
16		4361/C4	76	<i>Sire:</i> 1484/A10 Pickering <i>Sire of Dam:</i> 119/W19 Cocklaw
17-20	T F C Robinson & Son, BOG HALL	410/C1 – 410/C4		<i>Sire:</i> 3114/A16 Shrewbridge <i>Sire of Dam:</i> 2814/W1 Street
21-22		410/C5 – 410/C6		<i>Sire:</i> 3114/A16 Shrewbridge <i>Sire of Dam:</i> 2399/Y11 Watersyke
23-25	J Herdman, EDLINGHAM	175/C25 – 175/C27		<i>Sire:</i> 2187/A12 St Ravenscar <i>Sire of Dam:</i> 1538/T4 Midlock
26		175/C28		<i>Sire:</i> 2187/A12 St Ravenscar <i>Sire of Dam:</i> 3989/V29 Clennell
27		175/C16		<i>Sire:</i> 1538/A11 Midlock <i>Sire of Dam:</i> 281/Z12 Carry House
28		175/C17		<i>Sire:</i> 1538/A11 Midlock <i>Sire of Dam:</i> 1458/W1 Ty-Gwyn
29		175/C18		<i>Sire:</i> 1538/A11 Midlock <i>Sire of Dam:</i> 1386/S1 Parkgatestone
30		175/C19		<i>Sire:</i> 1538/A11 Midlock <i>Sire of Dam:</i> 1538/T4 Midlock
31	J Carr & Co, HOMILTON	620/C9		<i>Sire:</i> 131/Z3 Melkridge Farm <i>Sire of Dam:</i> 830/T2 Snab Green
32		620/C13		<i>Sire:</i> 131/Z3 Melkridge Farm <i>Sire of Dam:</i> 1432/X10 Barf House
33		620/C6		<i>Sire:</i> 1538/B23 Midlock <i>Sire of Dam:</i> 98/X3 High Side
34		620/C12		<i>Sire:</i> 131/Z3 Melkridge Farm <i>Sire of Dam:</i> 1432/X10 Barf House
35-36		620/C10-620/C11		<i>Sire:</i> 131/Z3 Melkridge Farm <i>Sire of Dam:</i> 830/T3 Snab Green
37		620/C14		<i>Sire:</i> 131/Z3 Melkridge Farm <i>Sire of Dam:</i> 1432/X10 Barf House
38		620/C8		<i>Sire:</i> 131/Z3 Melkridge Farm <i>Sire of Dam:</i> 790/Z1 Yore House
39	J R F Pattinson, HOTTBANK	1877/C17		<i>Sire:</i> 281/A11 Carry House <i>Sire of Dam:</i> 800/W11 Brownsleazes
40		1877/C16		<i>Sire:</i> 281/A11 Carry House <i>Sire of Dam:</i> 800/W11 Brownsleazes
41		1877/C5		<i>Sire:</i> 2747/B5 Todhills <i>Sire of Dam:</i> 1653/X2 Quarry House
42		1877/C8		<i>Sire:</i> 281/A11 Carry House <i>Sire of Dam:</i> 2577/V4 Gapshield

<i>Lot No.</i>	<i>Exhibitor</i>	<i>Reg No.</i>	<i>Index No. NSP Genotype</i>
43-44		1877/C10-1877/C11	<i>Sire:</i> 281/A11 Carry House <i>Sire of Dam:</i> 1877/W9 Hottbank
45		1877/C2	<i>Sire:</i> 2747/B5 Todhills <i>Sire of Dam:</i> 2577/V9 Gapshield
46		1877/C9	<i>Sire:</i> 281/A11 Carry House <i>Sire of Dam:</i> 2577/V9 Gapshield
47		1877/C7	<i>Sire:</i> 281/A11 Carry House <i>Sire of Dam:</i> 980/S34 Hewgill
48		1877/C12	<i>Sire:</i> 281/A11 Carry House <i>Sire of Dam:</i> 800/W11 Brownsleazes
49		1877/C1	<i>Sire:</i> 2747/B5 Todhills <i>Sire of Dam:</i> 1653/X2 Quarry House
50		1877/C4	<i>Sire:</i> 2747/B5 Todhills <i>Sire of Dam:</i> 2577/V4 Gapshield
51	S J Charlton, THE SHIELD	1641/C1	<i>Sire:</i> 65/Z3 Burndale <i>Sire of Dam:</i> 281/S39 Carry House
52-53		1641/C2 – 1641/C3	<i>Sire:</i> 65/Z3 Burndale <i>Sire of Dam:</i> 111/Y9 Old Parks
54		1641/C4	<i>Sire:</i> 65/Z3 Burndale <i>Sire of Dam:</i> 50/W6 Lowes Fell
55	R English & Son, BROWNSLEAZES	800/C5	<i>Sire:</i> 800/B2 Brownsleazes <i>Sire of Dam:</i> 1574/X1 Firth
56		800/C10	<i>Sire:</i> 800/B2 Brownsleazes <i>Sire of Dam:</i> 684/Y7 Swathburn
57		800/C3	<i>Sire:</i> 800/B2 Brownsleazes <i>Sire of Dam:</i> 1574/X1 Firth
58		800/C6	<i>Sire:</i> 800/B2 Brownsleazes <i>Sire of Dam:</i> 1574/X1 Firth
59		800/C7	<i>Sire:</i> 800/B2 Brownsleazes <i>Sire of Dam:</i> 800/R8 Brownsleazes
60-61	J A Murray, WEST BUTSFIELD	389/C1 - 389/C2	<i>Sire:</i> 2041/X37 Ilkley Moor <i>Sire of Dam:</i> 302/R31 College
62	G Dixon, ALWINTON	3764/C1	<i>Sire:</i> 2577/A1 Gapshield <i>Sire of Dam:</i> 840/X4 Rossiebank
63		3764/C4	<i>Sire:</i> 2577/A1 Gapshield <i>Sire of Dam:</i> 3989/X35 Clennell
64		3764/C11	<i>Sire:</i> 2577/A1 Gapshield <i>Sire of Dam:</i> 3989/X35 Clennell
65		3764/C8	<i>Sire:</i> 2577/A1 Gapshield <i>Sire of Dam:</i> 2399/Y10 Watersyke
66		3764/C21	<i>Sire:</i> 3764/B10 Alwinton <i>Sire of Dam:</i> 3764/B19 Alwinton
67	T L Forster & Son, LOWES FELL	50/C1	<i>Sire:</i> 468/A5 Walton <i>Sire of Dam:</i> 50/W15 Lowes Fell
68		50/C4	<i>Sire:</i> 468/A5 Walton <i>Sire of Dam:</i> 1000/V11 Ewanston
69		50/C2	<i>Sire:</i> 468/A5 Walton <i>Sire of Dam:</i> 50/T1 Lowes Fell
70		50/C3	<i>Sire:</i> 468/A5 Walton <i>Sire of Dam:</i> 50/P27 Lowes Fell
71		50/C5	<i>Sire:</i> 468/A5 Walton <i>Sire of Dam:</i> 50/W15 Lowes Fell
72		50/C6	<i>Sire:</i> 50/W15 Lowes Fell <i>Sire of Dam:</i> 50/P27 Lowes Fell
73		50/C8	<i>Sire:</i> 50/W15 Lowes Fell <i>Sire of Dam:</i> 50/R1 Lowes Fell
74		50/C10	<i>Sire:</i> 50/W15 Lowes Fell <i>Sire of Dam:</i> 975/M1 Newmills
75		50/C13	<i>Sire:</i> 50/W15 Lowes Fell <i>Sire of Dam:</i> 233/R11 Parton
76		50/C12	<i>Sire:</i> 50/W15 Lowes Fell <i>Sire of Dam:</i> 1000/V11 Ewanston

<i>Lot No.</i>	<i>Exhibitor</i>	<i>Reg No.</i>	<i>Index No.</i>	<i>NSP Genotype</i>
77		50/C11		<i>Sire:</i> 50/W15 Lowes Fell <i>Sire of Dam:</i> 1000/V11 Ewanston
78		50/C14		<i>Sire:</i> 50/W15 Lowes Fell <i>Sire of Dam:</i> 233/R11 Parton
*79	R L Carter, LINDOWAN	3464/B1		<i>Sire:</i> 509/W1 Mayland <i>Sire of Dam:</i> 1389/Z13 Davy Shields
80	J Elliot, BRANTON	2819/C1		<i>Sire:</i> 3331/B7 Cottage <i>Sire of Dam:</i> 175/W23 Edlingham
81		2819/C2		<i>Sire:</i> 3331/B7 Cottage <i>Sire of Dam:</i> 175/Y5 Edlingham
82		2819/C3		<i>Sire:</i> 3331/B7 Cottage <i>Sire of Dam:</i> 1939/Y9 Hazelwood
83	M W & C M Ridley, SHITLINGTON	2857/C10		<i>Sire:</i> 1080/A7 Shaffhill <i>Sire of Dam:</i> 800/P13 Brownsleazes
84		2857/C14		<i>Sire:</i> 752/B11 Riddings <i>Sire of Dam:</i> 131/V1 Melkridge Farm
85		2857/C2		<i>Sire:</i> 2571/B19 Macqueston <i>Sire of Dam:</i> 980/V6 Hewgill
86		2857/C6		<i>Sire:</i> 1574/Y9 Firth <i>Sire of Dam:</i> 131/V1 Melkridge Farm
87	M J Snaith, CLENNELL	3989/C6		<i>Sire:</i> 1538/A11 Midlock <i>Sire of Dam:</i> 3989/Y29 Clennell
88		3989/C2		<i>Sire:</i> 1538/A11 Midlock <i>Sire of Dam:</i> 3989/Y29 Clennell
89		3989/C27		<i>Sire:</i> 1538/A11 Midlock <i>Sire of Dam:</i> 111/W1 Old Parks
90		3989/C35		<i>Sire:</i> 1538/A11 Midlock <i>Sire of Dam:</i> 111/W1 Old Parks
91		3989/C26		<i>Sire:</i> 1538/A11 Midlock <i>Sire of Dam:</i> 111/W1 Old Parks
92		3989/C14		<i>Sire:</i> 1538/A11 Midlock <i>Sire of Dam:</i> 111/W1 Old Parks
93	Messrs R D Archer & Son, CARRY HOUSE Performance Recorded Flock	281/C23	181	<i>Sire:</i> 2224/Z1 Breck House <i>Sire of Dam:</i> 980/T14 Hewgill
94		281/C26	194	<i>Sire:</i> 2224/Z1 Breck House <i>Sire of Dam:</i> 752/S12 Riddings
95-96	D J & J E Lumley, NOOKTON	1106/C11 – 1106/C12		<i>Sire:</i> 1183/B7 Myfyrian <i>Sire of Dam:</i> 1106/S25 Nookton
97	Lilburn Estates Farming Partnership, ROSEDEN	4260/C3		<i>Sire:</i> 125/Y26 West Bolton <i>Sire of Dam:</i> 2217/Y35 Barlaes
98		4260/C36		<i>Sire:</i> 3989/A9 Clennell <i>Sire of Dam:</i> 3989/Y4 Clennell
99		4260/C19		<i>Sire:</i> 125/Y26 West Bolton <i>Sire of Dam:</i> 2217/Y35 Barlaes

RAM LAMBS

100	M W & C M Ridley, SHITLINGTON	2857/D1		<i>Sire:</i> 752/B11 Riddings <i>Sire of Dam:</i> 1574/A2 Firth
101		2857/D2		<i>Sire:</i> 752/B11 Riddings <i>Sire of Dam:</i> 800/P13 Brownsleazes
102		2857/D3		<i>Sire:</i> 752/B11 Riddings <i>Sire of Dam:</i> 2329/Y11 Craigskean
103	T Iley, SHIRLAW	3254/D1		<i>Sire:</i> 3254/C1 Shirlaw <i>Sire of Dam:</i> 3254/ Shirlaw
104	Watson Brothers, HINEDON	4167/D1		<i>Sire:</i> 640/X1 Kirkby Redgate <i>Sire of Dam:</i> 509/W1 Mayland

<i>Lot No.</i>	<i>Exhibitor</i>	<i>Reg No.</i>	<i>Index No. NSP Genotype</i>
105		4167/D2	<i>Sire: 640/X1 Kirkby Redgate Sire of Dam: 399/Y3 Laund</i>
106		4167/D4	<i>Sire: 640/P1 Kirkby Redgate Sire of Dam: 640/Z2 Kirkby Redgate</i>
107	Messrs R D Archer & Son, CARRY HOUSE Performance Recorded Flock	281/D9	<i>Sire: 2224/Z1 Breck House Sire of Dam: 3230/Z1 Bewcastle</i>
108		281/D8	<i>Sire: 2224/Z1 Breck House Sire of Dam: 1503/T3 Greenriggs</i>
109		281/D16	<i>Sire: 281/C29 Carry House Cracker Sire of Dam: 281/X39 Carry House X Factor</i>
110		281/D25	<i>Sire: 281/B27 Carry House Sire of Dam: 281/S35 Carry House</i>
111	Crow Hall Farms Ltd, CROW HALL	4404/D2	<i>Sire: 2329/B10 Craigskean Sire of Dam: 3943/Y5 Penpeugh</i>
112		4404/D1	<i>Sire: 1080/Shafthill Sire of Dam: 3425/W20 Highberries</i>
113		4404/D5	<i>Sire: 2329/B10 Craigskean Sire of Dam: 3943/Y5 Penpeugh</i>

	1st	2nd	3rd	4th
CLASS 1				
CLASS 2				
CLASS 3				
CLASS 4				
CLASS 5				
CLASS 6				
CLASS 7				
CLASS 8				

MALE CHAMPION	
FEMALE CHAMPION	
CHAMPION	
RESERVE CHAMPION	

Bluefaced Leicesters
50th Anniversary
2012
50 Years Young

Come and join in the celebrations on

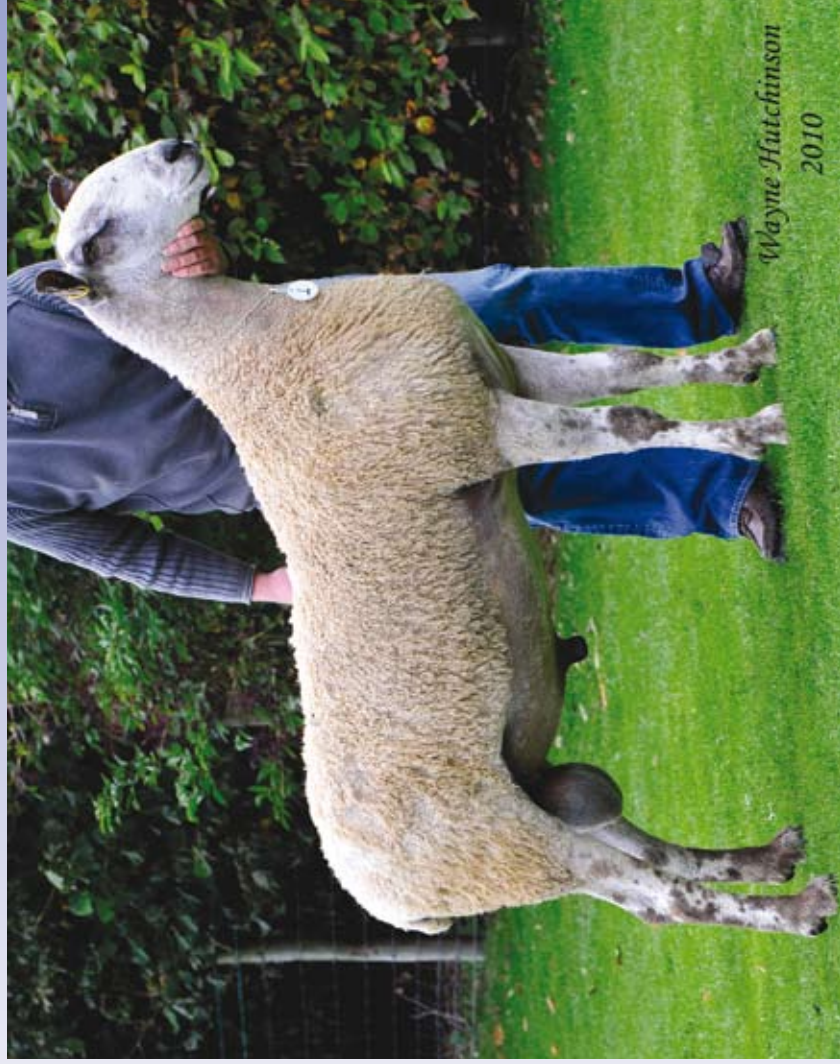
**SATURDAY 11TH &
SUNDAY 12TH AUGUST 2012**

A weekend of events, to include a champagne reception followed by a dinner and dance at The Shap Wells Hotel, Penrith, Cumbria

With
Guest Speaker
Adam Henson

Full details of this event
will be in the 2011
Autumn Review magazine.





800/B003 HEXHAM TOP PRICE 2010

Bred & Exhibited by Mr R M English, BROWNSLEAZES
Purchased for £2,400.00 by Messrs J Herdman, EDLINGHAM and M J Snaith, CLENNELL
Sire 1574/A002 FIRTH